

Datasheet for ABIN7266160
anti-CEBPD antibody (AA 1-269)[Go to Product page](#)

1 Image

Overview

Quantity:	100 µL
Target:	CEBPD
Binding Specificity:	AA 1-269
Reactivity:	Human
Host:	Rabbit
Clonality:	Polyclonal
Conjugate:	This CEBPD antibody is un-conjugated
Application:	Western Blotting (WB)

Product Details

Purpose:	CEBPD Rabbit pAb
Immunogen:	Recombinant fusion protein containing a sequence corresponding to amino acids 1-269 of human CEBPD (NP_005186.2).
Sequence:	MSAALFSLDG PARGAPWPAE PAPFYEPGRA GKPGRGAEPG ALGEPGAAAP AMYDDESAID FSAYIDSMAA VPTLELCHDE LFADLFNSNH KAGGAGPLEL LPGGPAPRLG PGPAAPRLLK REPDWGDGDA PGSLLPAQVA ACAQTVVSLA AAGQTPPTS PEPPRSSPRQ TPAPGPAREK SAGKRGPD RG SPEYRQRRER NNIIVRKS RD KAKRRNQEMQ QKLVELSAEN EKLHQRVEQL TRDLAGLRQF FKQLPSPFFL PAAGTADCR
Isotype:	IgG
Cross-Reactivity:	Mouse
Characteristics:	Polyclonal Antibodies

Product Details

Purification: Affinity purification

Target Details

Target: CEBPD

Alternative Name: CEBPD ([CEBPD Products](#))

Background: The protein encoded by this intronless gene is a bZIP transcription factor which can bind as a homodimer to certain DNA regulatory regions. It can also form heterodimers with the related protein CEBP-alpha. The encoded protein is important in the regulation of genes involved in immune and inflammatory responses, and may be involved in the regulation of genes associated with activation and/or differentiation of macrophages. The cytogenetic location of this locus has been reported as both 8p11 and 8q11.,CEBPD,C/EBP-delta,CELF,CRP3,NF-IL6-beta,Epigenetics & Nuclear Signaling,Transcription Factors,Endocrine & Metabolism,Endocrine and metabolic diseases,Obesity,Immunology & Inflammation,Cell Intrinsic Innate Immunity Signaling Pathway,Cardiovascular,CEBPD

Molecular Weight: 28kDa

Gene ID: 1052

UniProt: [P49716](#)

Application Details

Application Notes: WB,1:200 - 1:2000

Restrictions: For Research Use only

Handling

Format: Liquid

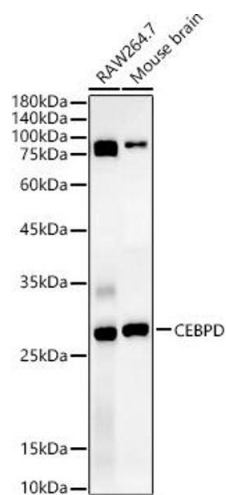
Buffer: PBS with 0.02 % sodium azide,50 % glycerol, pH 7.3.

Preservative: Sodium azide

Precaution of Use: This product contains Sodium azide: a POISONOUS AND HAZARDOUS SUBSTANCE which should be handled by trained staff only.

Storage: -20 °C

Storage Comment: Store at -20°C. Avoid freeze / thaw cycles.



Western Blotting

Image 1. Western blot analysis of extracts of various cell lines, using CEBPD antibody (ABIN7266160) at 1:1340 dilution. Secondary antibody: HRP Goat Anti-Rabbit IgG (H+L) (ABIN1684268 and ABIN3020597) at 1:10000 dilution. Lysates/proteins: 25 µg per lane. Blocking buffer: 3 % nonfat dry milk in TBST. Detection: ECL Basic Kit (RM00020). Exposure time: 30s.