

Datasheet for ABIN7266164

anti-CTCF antibody

5 Images



[Go to Product page](#)

Overview

Quantity:	100 µL
Target:	CTCF
Reactivity:	Human
Host:	Rabbit
Clonality:	Monoclonal
Conjugate:	This CTCF antibody is un-conjugated
Application:	Western Blotting (WB), Immunofluorescence (IF), Chromatin Immunoprecipitation (ChIP), Immunoprecipitation (IP)

Product Details

Purpose:	CTCF Rabbit mAb
Immunogen:	A synthesized peptide derived from human CTCF.
Isotype:	IgG
Cross-Reactivity:	Human, Mouse, Rat
Characteristics:	Monoclonal Antibodies
Purification:	Affinity purification

Target Details

Target:	CTCF
Alternative Name:	CTCF (CTCF Products)

Target Details

Background: This gene is a member of the BORIS + CTCF gene family and encodes a transcriptional regulator protein with 11 highly conserved zinc finger (ZF) domains. This nuclear protein is able to use different combinations of the ZF domains to bind different DNA target sequences and proteins. Depending upon the context of the site, the protein can bind a histone acetyltransferase (HAT)-containing complex and function as a transcriptional activator or bind a histone deacetylase (HDAC)-containing complex and function as a transcriptional repressor. If the protein is bound to a transcriptional insulator element, it can block communication between enhancers and upstream promoters, thereby regulating imprinted expression. Mutations in this gene have been associated with invasive breast cancers, prostate cancers, and Wilms' tumors. Alternatively spliced transcript variants encoding different isoforms have been found for this gene. [provided by RefSeq, Jul 2010],CTCF;MRD21;CTCF,Epigenetics & Nuclear Signaling,CTCF

Molecular Weight: 140kDa

Gene ID: 10664

UniProt: [P49711](#)

Application Details

Application Notes: WB,1:500 - 1:2000,IF,1:50 - 1:200,IP,1:50 - 1:200,ChIP,1:20 - 1:100

Restrictions: For Research Use only

Handling

Format: Liquid

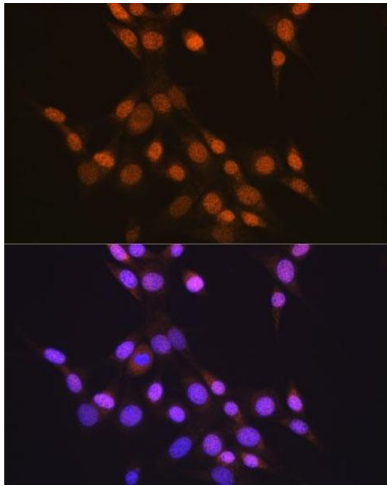
Buffer: PBS with 0.02 % sodium azide,0.05 % BSA,50 % glycerol, pH 7.3.

Preservative: Sodium azide

Precaution of Use: This product contains Sodium azide: a POISONOUS AND HAZARDOUS SUBSTANCE which should be handled by trained staff only.

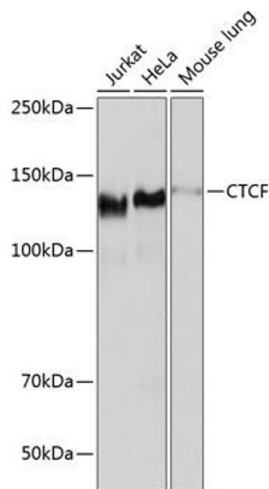
Storage: -20 °C

Storage Comment: Store at -20°C. Avoid freeze / thaw cycles.



Immunofluorescence

Image 1. Immunofluorescence analysis of NIH-3T3 cells using CTCF antibody (ABIN7266164). Blue: DAPI for nuclear staining.



Western Blotting

Image 2. Western blot analysis of extracts of various cell lines, using CTCF antibody (ABIN7266164) at 1:1000 dilution. Secondary antibody: HRP Goat Anti-Rabbit IgG (H+L) (ABIN1684268 and ABIN3020597) at 1:10000 dilution. Lysates/proteins: 25 µg per lane. Blocking buffer: 3 % nonfat dry milk in TBST. Detection: ECL Basic Kit (RM00020). Exposure time: 30s.

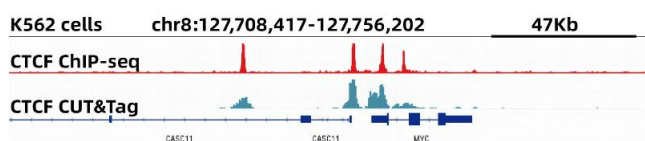


Image 3. CUT&Tag was performed using the CUT&Tag Assay Kit (pAG-Tn5) for Illumina (RK20265) from 10^5 K562 cells with 2 µg CTCF Rabbit mAb, along with a Goat Anti-Rabbit IgG (H+L). The CUT&Tag results indicate the enrichment pattern of CTCF in representative gene loci (MYC), as shown in figure.

Please check the [product details page](#) for more images. Overall 5 images are available for ABIN7266164.