

Datasheet for ABIN7266167

anti-CD14 antibody

5 Images

[Go to Product page](#)

Overview

Quantity:	100 µL
Target:	CD14
Reactivity:	Human
Host:	Rabbit
Clonality:	Monoclonal
Conjugate:	This CD14 antibody is un-conjugated
Application:	Western Blotting (WB), Immunohistochemistry (IHC), Immunofluorescence (IF)

Product Details

Purpose:	CD14 Rabbit mAb
Immunogen:	A synthesized peptide derived from human CD14
Isotype:	IgG
Cross-Reactivity:	Human, Mouse
Characteristics:	Monoclonal Antibodies
Purification:	Affinity purification

Target Details

Target:	CD14
Alternative Name:	CD14 (CD14 Products)
Background:	The protein encoded by this gene is a surface antigen that is preferentially expressed on

Target Details

monocytes/macrophages. It cooperates with other proteins to mediate the innate immune response to bacterial lipopolysaccharide. Alternative splicing results in multiple transcript variants encoding the same protein. [provided by RefSeq, Mar 2010],CD14,Apoptosis,CDs,Cell Biology & Developmental Biology,Cell Intrinsic Innate Immunity Signaling Pathway,Endothelial Progenitors,Hematopoietic Progenitors,Immunology & Inflammation,Innate Immunity_TLR Signaling,Mesenchymal Stem Cells,Stem Cells,Toll-like Receptor Signaling Pathway,CD14

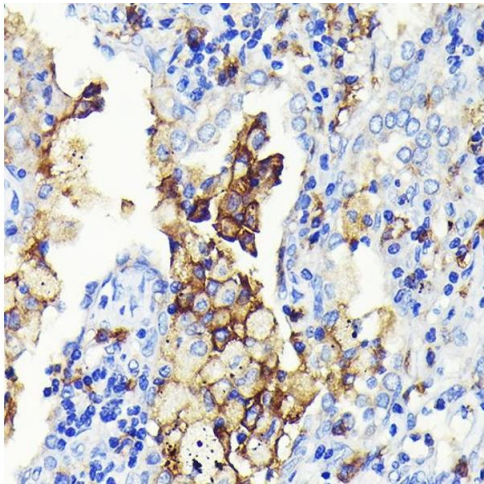
Molecular Weight:	53kDa
Gene ID:	929
UniProt:	P08571
Pathways:	TLR Signaling , Activation of Innate immune Response , Cellular Response to Molecule of Bacterial Origin , Toll-Like Receptors Cascades

Application Details

Application Notes:	WB,1:500 - 1:2000,IHC,1:50 - 1:200,IF,1:50 - 1:200
Restrictions:	For Research Use only

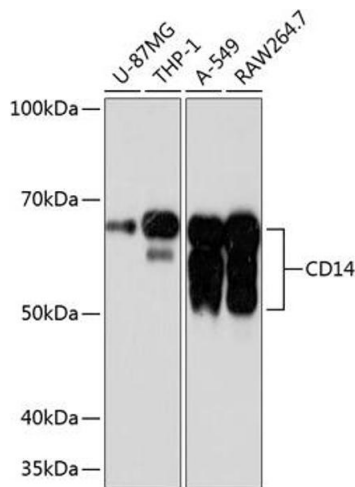
Handling

Format:	Liquid
Buffer:	PBS with 0.02 % sodium azide,0.05 % BSA,50 % glycerol, pH 7.3.
Preservative:	Sodium azide
Precaution of Use:	This product contains Sodium azide: a POISONOUS AND HAZARDOUS SUBSTANCE which should be handled by trained staff only.
Storage:	-20 °C
Storage Comment:	Store at -20°C. Avoid freeze / thaw cycles.



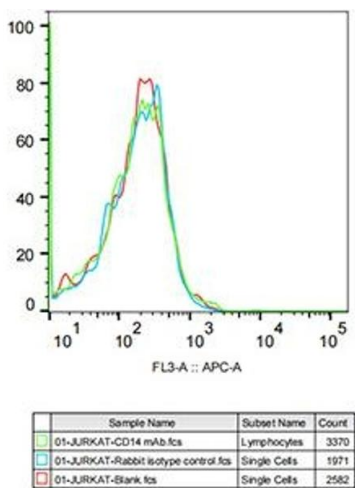
Immunohistochemistry

Image 1. Immunohistochemistry of paraffin-embedded human lung cancer using CD14 Rabbit mAb (ABIN7266167) at dilution of 1:100 (40x lens). Perform microwave antigen retrieval with 10 mM PBS buffer pH 7.2 before commencing with IHC staining protocol.



Western Blotting

Image 2. Western blot analysis of extracts of various cell lines, using CD14 antibody (ABIN7266167) at 1:1000 dilution. Secondary antibody: HRP Goat Anti-Rabbit IgG (H+L) (ABIN1684268 and ABIN3020597) at 1:10000 dilution. Lysates/proteins: 25 µg per lane. Blocking buffer: 3 % nonfat dry milk in TBST. Detection: ECL Basic Kit (RM00020). Exposure time: 3 min.



Flow Cytometry

Image 3. Flow cytometry: Jurkat cells were stained with Rabbit IgG isotype control (, 10 µg/mL, blue line) or CD14 Rabbit mAb (ABIN7266167, 10 µg/mL green line), followed by Alexa Fluor 647 conjugated goat anti-rabbit pAb(1:600 dilution) staining. Non-fluorescently stained Jurkat cells were used as blank control (red line).

Please check the [product details page](#) for more images. Overall 5 images are available for ABIN7266167.