



[Go to Product page](#)

Datasheet for ABIN7266173  
**anti-DC-SIGN/CD209 antibody**

4 Images

### Overview

Quantity:	100 µL
Target:	DC-SIGN/CD209 (CD209)
Reactivity:	Human
Host:	Rabbit
Clonality:	Monoclonal
Conjugate:	This DC-SIGN/CD209 antibody is un-conjugated
Application:	Western Blotting (WB), Immunohistochemistry (IHC), Immunofluorescence (IF)

### Product Details

Purpose:	CD209 Rabbit mAb
Immunogen:	A synthesized peptide derived from human CD209
Isotype:	IgG
Cross-Reactivity:	Human, Mouse, Rat
Characteristics:	Monoclonal Antibodies
Purification:	Affinity purification

### Target Details

Target:	DC-SIGN/CD209 (CD209)
Alternative Name:	CD209 ( <a href="#">CD209 Products</a> )
Background:	This gene encodes a transmembrane receptor and is often referred to as DC-SIGN because of

## Target Details

---

its expression on the surface of dendritic cells and macrophages. The encoded protein is involved in the innate immune system and recognizes numerous evolutionarily divergent pathogens ranging from parasites to viruses with a large impact on public health. The protein is organized into three distinct domains: an N-terminal transmembrane domain, a tandem-repeat neck domain and C-type lectin carbohydrate recognition domain. The extracellular region consisting of the C-type lectin and neck domains has a dual function as a pathogen recognition receptor and a cell adhesion receptor by binding carbohydrate ligands on the surface of microbes and endogenous cells. The neck region is important for homo-oligomerization which allows the receptor to bind multivalent ligands with high avidity. Variations in the number of 23 amino acid repeats in the neck domain of this protein are rare but have a significant impact on ligand binding ability. This gene is closely related in terms of both sequence and function to a neighboring gene (GenID 10332, often referred to as L-SIGN). DC-SIGN and L-SIGN differ in their ligand-binding properties and distribution. Alternative splicing results in multiple variants.[provided by RefSeq, Feb 2009],CDSIGN, CLEC4L, DC-SIGN, DC-SIGN1,CDs,Cell Adhesion,Cell Biology & Developmental Biology,Cytoskeleton,Immunology & Inflammation,Signal Transduction,CD209

---

Molecular Weight: 50kDa

---

Gene ID: 30835

---

UniProt: [Q9NNX6](#)

## Application Details

---

Application Notes: WB,1:500 - 1:2000,IHC,1:50 - 1:200,IF,1:50 - 1:200

---

Restrictions: For Research Use only

## Handling

---

Format: Liquid

---

Buffer: PBS with 0.02 % sodium azide,0.05 % BSA,50 % glycerol, pH 7.3.

---

Preservative: Sodium azide

---

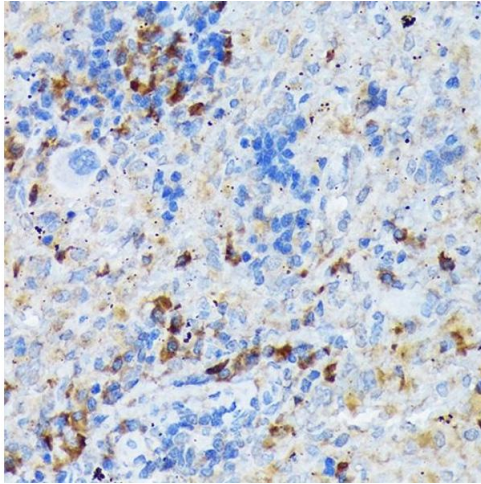
Precaution of Use: This product contains Sodium azide: a POISONOUS AND HAZARDOUS SUBSTANCE which should be handled by trained staff only.

---

Storage: -20 °C

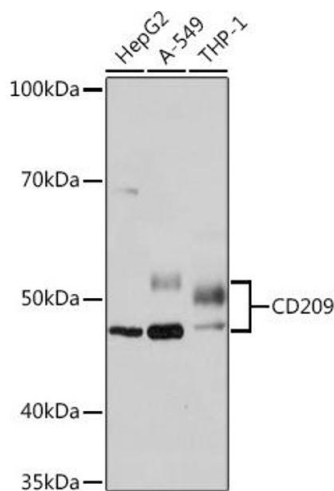
---

Storage Comment: Store at -20°C. Avoid freeze / thaw cycles.



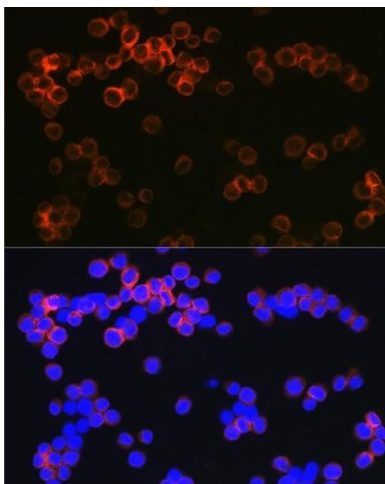
### Immunohistochemistry

**Image 1.** Immunohistochemistry of paraffin-embedded rat spleen using CD29 Rabbit mAb (ABIN7266173) at dilution of 1:100 (40x lens). Perform microwave antigen retrieval with 10 mM Tris/EDTA buffer pH 9.0 before commencing with IHC staining protocol.



### Western Blotting

**Image 2.** Western blot analysis of extracts of various cell lines, using CD29 Rabbit mAb (ABIN7266173) at 1:1000 dilution. Secondary antibody: HRP Goat Anti-Rabbit IgG (H+L) (ABIN1684268 and ABIN3020597) at 1:10000 dilution. Lysates/proteins: 25 µg per lane. Blocking buffer: 3 % nonfat dry milk in TBST. Detection: ECL Basic Kit (RM00020). Exposure time: 90s.



### Immunofluorescence

**Image 3.** Immunofluorescence analysis of Raw264.7 cells using CD29 Rabbit mAb (ABIN7266173) at dilution of 1:100 (40x lens). Blue: DAPI for nuclear staining.

Please check the [product details page](#) for more images. Overall 4 images are available for ABIN7266173.