

Datasheet for ABIN7266178

anti-PD-L1 antibody

4 Images

[Go to Product page](#)

Overview

Quantity:	100 µL
Target:	PD-L1
Reactivity:	Human
Host:	Rabbit
Clonality:	Monoclonal
Conjugate:	This PD-L1 antibody is un-conjugated
Application:	Western Blotting (WB), Immunohistochemistry (IHC)

Product Details

Purpose:	[KO Validated] PD-L1/CD274 Rabbit mAb
Immunogen:	A synthetic peptide of human PD-L1/CD274.
Isotype:	IgG
Cross-Reactivity:	Human, Mouse, Rat
Characteristics:	Monoclonal Antibodies
Purification:	Affinity purification
Grade:	KO Validated

Target Details

Target:	PD-L1
Alternative Name:	PD-L1 (PD-L1 Products)

Target Details

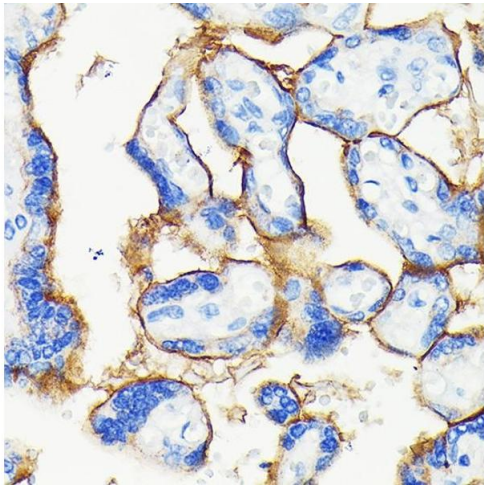
Background:	This gene encodes an immune inhibitory receptor ligand that is expressed by hematopoietic and non-hematopoietic cells, such as T cells and B cells and various types of tumor cells. The encoded protein is a type I transmembrane protein that has immunoglobulin V-like and C-like domains. Interaction of this ligand with its receptor inhibits T-cell activation and cytokine production. During infection or inflammation of normal tissue, this interaction is important for preventing autoimmunity by maintaining homeostasis of the immune response. In tumor microenvironments, this interaction provides an immune escape for tumor cells through cytotoxic T-cell inactivation. Expression of this gene in tumor cells is considered to be prognostic in many types of human malignancies, including colon cancer and renal cell carcinoma. Alternative splicing results in multiple transcript variants.,B7-H,B7H1,PDL1,PD-L1,PDCD1L1,PDCD1LG1,CD274,CDs,Immunology & Inflammation,PD-L1
Molecular Weight:	20kDa/33kDa
Gene ID:	29126
UniProt:	Q9NZQ7
Pathways:	Cancer Immune Checkpoints

Application Details

Application Notes:	WB,1:500 - 1:2000,IHC,1:50 - 1:200
Restrictions:	For Research Use only

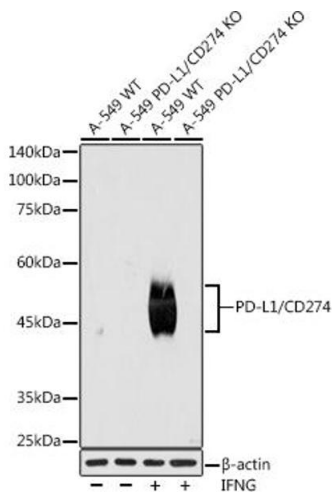
Handling

Format:	Liquid
Buffer:	PBS with 0.02 % sodium azide,0.05 % BSA,50 % glycerol, pH 7.3.
Preservative:	Sodium azide
Precaution of Use:	This product contains Sodium azide: a POISONOUS AND HAZARDOUS SUBSTANCE which should be handled by trained staff only.
Storage:	-20 °C
Storage Comment:	Store at -20°C. Avoid freeze / thaw cycles.



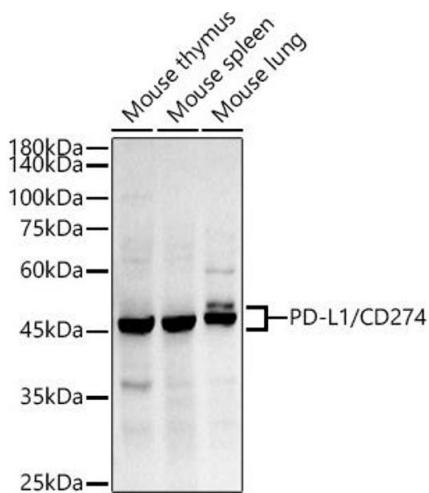
Immunohistochemistry

Image 1. Immunohistochemistry of paraffin-embedded human placenta using [KO Validated] PD-L1/CD274 Rabbit mAb (ABIN7266178) at dilution of 1:100 (40x lens). Perform high pressure antigen retrieval with 10 mM citrate buffer pH 6.0 before commencing with IHC staining protocol.



Western Blotting

Image 2. Western blot analysis of extracts from wild type (WT) and PD-L1/CD274 knockout (KO) A-549, A-549+IFNG cells, using PD-L1/CD274 antibody (ABIN7266178) at 1:1000 dilution. A-549 cells were treated by IFNG (100 ng/mL) at 37 °C for 48 hours. Secondary antibody: HRP Goat Anti-Rabbit IgG (H+L) (ABIN1684268 and ABIN3020597) at 1:10000 dilution. Lysates/proteins: 25 µg per lane. Blocking buffer: 3 % nonfat dry milk in TBST. Detection: ECL Enhanced Kit (RM00021). Exposure time: 180s.



Western Blotting

Image 3. Western blot analysis of extracts of various cell lines, using PD-L1/CD274 antibody (ABIN7266178) at 1:500 dilution. Secondary antibody: HRP Goat Anti-Rabbit IgG (H+L) (ABIN1684268 and ABIN3020597) at 1:10000 dilution. Lysates/proteins: 25 µg per lane. Blocking buffer: 3 % nonfat dry milk in TBST. Detection: ECL Enhanced Kit (RM00021). Exposure time: 180s.

Please check the [product details page](#) for more images. Overall 4 images are available for ABIN7266178.