



[Go to Product page](#)

Datasheet for ABIN7266211

## anti-CD68 antibody

### 7 Images

#### Overview

Quantity:	100 µL
Target:	CD68
Reactivity:	Human
Host:	Rabbit
Clonality:	Monoclonal
Conjugate:	This CD68 antibody is un-conjugated
Application:	Western Blotting (WB), Immunohistochemistry (IHC)

#### Product Details

Purpose:	CD68 Rabbit mAb
Immunogen:	Recombinant protein of human CD68.
Isotype:	IgG
Cross-Reactivity:	Human, Mouse, Rat
Characteristics:	Monoclonal Antibodies
Purification:	Affinity purification

#### Target Details

Target:	CD68
Alternative Name:	CD68 ( <a href="#">CD68 Products</a> )
Background:	This gene encodes a 110-kD transmembrane glycoprotein that is highly expressed by human

## Target Details

---

monocytes and tissue macrophages. It is a member of the lysosomal/endosomal-associated membrane glycoprotein (LAMP) family. The protein primarily localizes to lysosomes and endosomes with a smaller fraction circulating to the cell surface. It is a type I integral membrane protein with a heavily glycosylated extracellular domain and binds to tissue- and organ-specific lectins or selectins. The protein is also a member of the scavenger receptor family. Scavenger receptors typically function to clear cellular debris, promote phagocytosis, and mediate the recruitment and activation of macrophages. Alternative splicing results in multiple transcripts encoding different isoforms.,CD68,GP110,LAMP4,SCARD1,Immunology & Inflammation,CD markers,CD68

---

Molecular Weight: 31kDa/34kDa/37kDa

---

Gene ID: 968

---

UniProt: [P34810](#)

## Application Details

---

Application Notes: WB,1:500 - 1:2000,IHC,1:50 - 1:200

---

Restrictions: For Research Use only

## Handling

---

Format: Liquid

---

Buffer: PBS with 0.02 % sodium azide,50 % glycerol, pH 7.3.

---

Preservative: Sodium azide

---

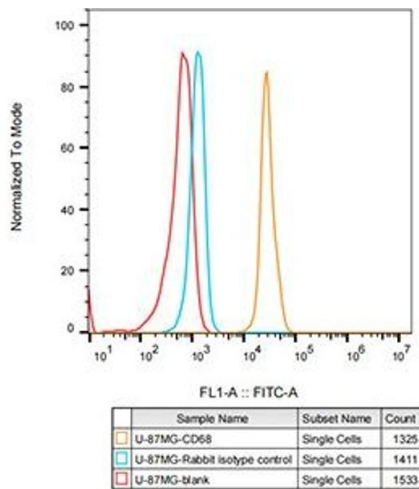
Precaution of Use: This product contains Sodium azide: a POISONOUS AND HAZARDOUS SUBSTANCE which should be handled by trained staff only.

---

Storage: -20 °C

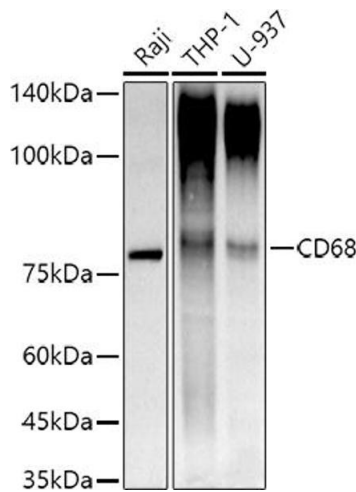
---

Storage Comment: Store at -20°C. Avoid freeze / thaw cycles.



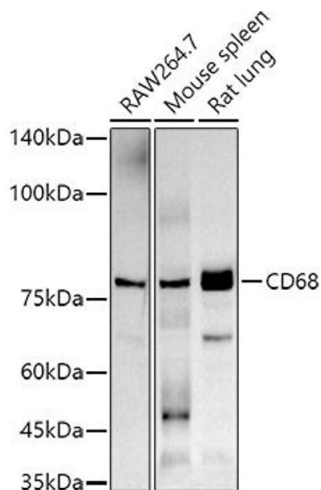
### Flow Cytometry

**Image 1.** Flow cytometry: U-87MG cells were stained with Rabbit IgG isotype control (, 10 µg/mL, blue line) or CD68 Rabbit mAb (ABIN7266211, 10 µg/mL orange line), followed by FITC conjugated goat anti-Rabbit pAb (1:200 dilution) staining. Non-fluorescently stained U-87MG cells were used as blank control (red line).



### Western Blotting

**Image 2.** Western blot analysis of extracts of various cell lines, using CD68 antibody (ABIN7266211) at 1:1000 dilution. Secondary antibody: HRP Goat Anti-Rabbit IgG (H+L) (ABIN1684268 and ABIN3020597) at 1:10000 dilution. Lysates/proteins: 25 µg per lane. Blocking buffer: 3 % nonfat dry milk in TBST. Detection: ECL Basic Kit (RM00020). Exposure time: 30s.



### Western Blotting

**Image 3.** Western blot analysis of extracts of various cell lines, using CD68 antibody (ABIN7266211) at 1:1000 dilution. Secondary antibody: HRP Goat Anti-Rabbit IgG (H+L) (ABIN1684268 and ABIN3020597) at 1:10000 dilution. Lysates/proteins: 25 µg per lane. Blocking buffer: 3 % nonfat dry milk in TBST. Detection: ECL Basic Kit (RM00020). Exposure time: 90s.

Please check the [product details page](#) for more images. Overall 7 images are available for ABIN7266211.