



Datasheet for ABIN7266240

anti-CDV3 antibody



[Go to Product page](#)

3 Images

Overview

Quantity:	100 µL
Target:	CDV3
Reactivity:	Human
Host:	Rabbit
Clonality:	Polyclonal
Conjugate:	This CDV3 antibody is un-conjugated
Application:	Western Blotting (WB), Immunofluorescence (IF)

Product Details

Purpose:	CDV3 Rabbit pAb
Immunogen:	Recombinant protein of human CDV3.
Isotype:	IgG
Cross-Reactivity:	Mouse, Rat
Characteristics:	Polyclonal Antibodies
Purification:	Affinity purification

Target Details

Target:	CDV3
Alternative Name:	CDV3 (CDV3 Products)
Background:	H41,CDV3,Cell Biology & Developmental Biology,CDV3

Target Details

Gene ID: 55573

UniProt: [Q9UKY7](#)

Application Details

Application Notes: WB,1:500 - 1:2000,IF,1:50 - 1:200

Restrictions: For Research Use only

Handling

Format: Liquid

Buffer: PBS with 0.02 % sodium azide,50 % glycerol, pH 7.3.

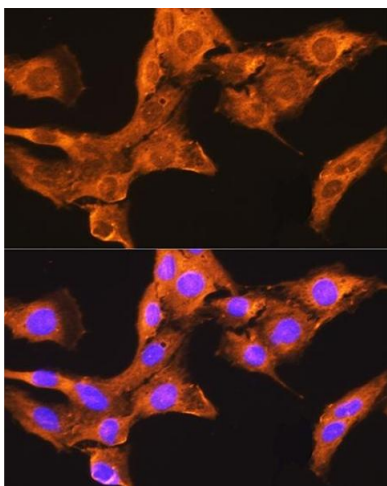
Preservative: Sodium azide

Precaution of Use: This product contains Sodium azide: a POISONOUS AND HAZARDOUS SUBSTANCE which should be handled by trained staff only.

Storage: -20 °C

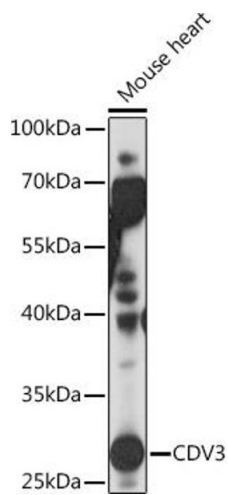
Storage Comment: Store at -20°C. Avoid freeze / thaw cycles.

Images



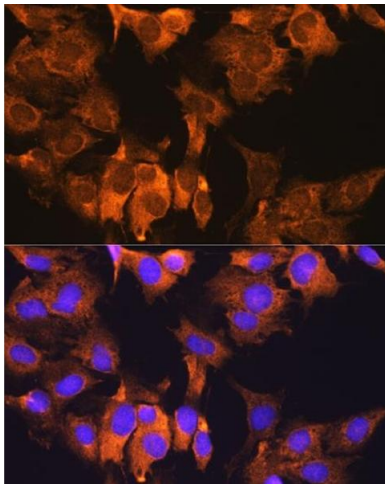
Immunofluorescence

Image 1. Immunofluorescence analysis of L929 cells using CDV3 Rabbit pAb (ABIN7266240) at dilution of 1:100. Blue: DAPI for nuclear staining.



Western Blotting

Image 2. Western blot analysis of extracts of Mouse heart, using CDV3 Rabbit pAb (ABIN7266240) at 1:1000 dilution. Secondary antibody: HRP Goat Anti-Rabbit IgG (H+L) (ABIN1684268 and ABIN3020597) at 1:10000 dilution. Lysates/proteins: 25 µg per lane. Blocking buffer: 3 % nonfat dry milk in TBST. Detection: ECL Basic Kit (RM00020). Exposure time: 10s.



Immunofluorescence

Image 3. Immunofluorescence analysis of C6 cells using CDV3 Rabbit pAb (ABIN7266240) at dilution of 1:100. Blue: DAPI for nuclear staining.