

Datasheet for ABIN7266247

**anti-CDC23 antibody****2** Images[Go to Product page](#)

## Overview

Quantity:	100 µL
Target:	CDC23
Reactivity:	Human
Host:	Rabbit
Clonality:	Monoclonal
Conjugate:	This CDC23 antibody is un-conjugated
Application:	Western Blotting (WB), Immunofluorescence (IF)

## Product Details

Purpose:	CDC23 Rabbit mAb
Immunogen:	A synthesized peptide derived from human CDC23
Isotype:	IgG
Cross-Reactivity:	Human, Mouse, Rat
Characteristics:	Monoclonal Antibodies
Purification:	Affinity purification

## Target Details

Target:	CDC23
Alternative Name:	CDC23 ( <a href="#">CDC23 Products</a> )
Background:	The protein encoded by this gene shares strong similarity with <i>Saccharomyces cerevisiae</i>

## Target Details

Cdc23, a protein essential for cell cycle progression through the G2/M transition. This protein is a component of anaphase-promoting complex (APC), which is composed of eight protein subunits and highly conserved in eukaryotic cells. APC catalyzes the formation of cyclin B-ubiquitin conjugate that is responsible for the ubiquitin-mediated proteolysis of B-type cyclins. This protein and 3 other members of the APC complex contain the TPR (tetratricopeptide repeat), a protein domain important for protein-protein interaction. [provided by RefSeq, Jul 2008],ANAPC8, APC8, CUT23,Cancer,Cell Biology & Developmental Biology,Cell Cycle,Cell Cycle\_Cyclins,Ubiquitin,Ubiquitin\_Ubiquitin-Proteasome Signaling Pathway,CDC23

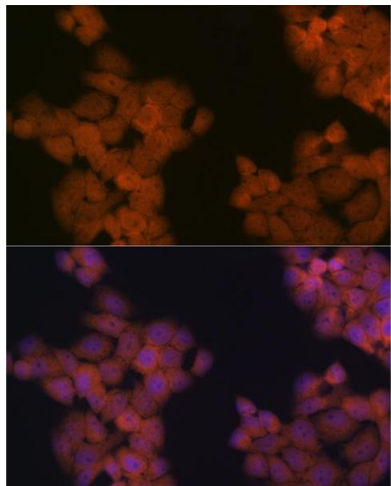
Molecular Weight:	64kDa
Gene ID:	8697
UniProt:	<a href="#">Q9UJX2</a>
Pathways:	<a href="#">Protein targeting to Nucleus</a>

## Application Details

Application Notes:	WB,1:500 - 1:2000,IF,1:50 - 1:200
Restrictions:	For Research Use only

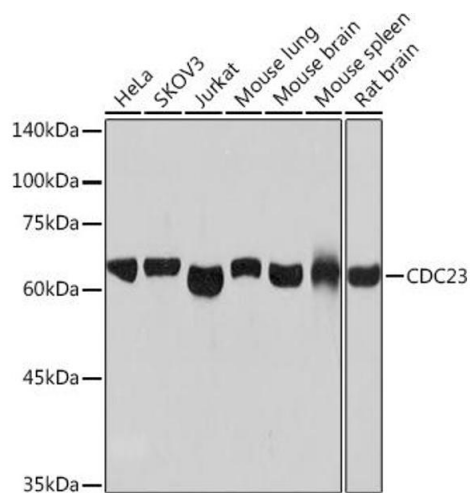
## Handling

Format:	Liquid
Buffer:	PBS with 0.02 % sodium azide,0.05 % BSA,50 % glycerol, pH 7.3.
Preservative:	Sodium azide
Precaution of Use:	This product contains Sodium azide: a POISONOUS AND HAZARDOUS SUBSTANCE which should be handled by trained staff only.
Storage:	-20 °C
Storage Comment:	Store at -20°C. Avoid freeze / thaw cycles.



Immunofluorescence

**Image 1.** Immunofluorescence analysis of HeLa cells using CDC23 Rabbit mAb (ABIN7266247) at dilution of 1:100 (40x lens). Blue: DAPI for nuclear staining.



Western Blotting

**Image 2.** Western blot analysis of extracts of various cell lines, using CDC23 Rabbit mAb (ABIN7266247) at 1:1000 dilution. Secondary antibody: HRP Goat Anti-Rabbit IgG (H+L) (ABIN1684268 and ABIN3020597) at 1:10000 dilution. Lysates/proteins: 25 µg per lane. Blocking buffer: 3 % nonfat dry milk in TBST. Detection: ECL Basic Kit (RM00020). Exposure time: 30s.