



[Go to Product page](#)

Datasheet for ABIN7266251
anti-CDC25C antibody

2 Images

Overview

Quantity:	100 µL
Target:	CDC25C
Reactivity:	Human
Host:	Rabbit
Clonality:	Monoclonal
Conjugate:	This CDC25C antibody is un-conjugated
Application:	Western Blotting (WB), Immunofluorescence (IF)

Product Details

Purpose:	Cdc25C Rabbit mAb
Immunogen:	A synthesized peptide derived from human Cdc25C
Isotype:	IgG
Cross-Reactivity:	Human, Mouse, Rat
Characteristics:	Monoclonal Antibodies
Purification:	Affinity purification

Target Details

Target:	CDC25C
Alternative Name:	CDC25C (CDC25C Products)
Background:	This gene encodes a conserved protein that plays a key role in the regulation of cell division.

Target Details

The encoded protein directs dephosphorylation of cyclin B-bound CDC2 and triggers entry into mitosis. It also suppresses p53-induced growth arrest. Multiple alternatively spliced transcript variants of this gene have been described. [provided by RefSeq, Dec 2015],CDC25, PPP1R60,Cell Biology & Developmental Biology,Cell Cycle,Epigenetics & Nuclear Signaling,G protein signaling,G protein signaling_G-Protein-Coupled Receptors Signaling to MAPK/Erk,G2/M DNA Damage Checkpoint,Kinase,MAPK-Erk Signaling Pathway,Protein phosphorylation,Signal Transduction,CDC25C

Molecular Weight: 60kDa

Gene ID: 995

UniProt: [P30307](#)

Pathways: [Cell Division Cycle, M Phase](#)

Application Details

Application Notes: WB,1:500 - 1:2000,IF,1:50 - 1:200

Restrictions: For Research Use only

Handling

Format: Liquid

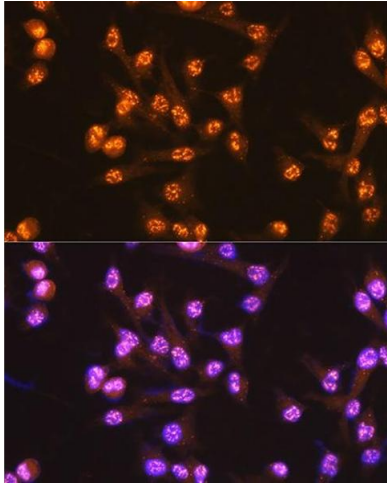
Buffer: PBS with 0.02 % sodium azide,0.05 % BSA,50 % glycerol, pH 7.3.

Preservative: Sodium azide

Precaution of Use: This product contains Sodium azide: a POISONOUS AND HAZARDOUS SUBSTANCE which should be handled by trained staff only.

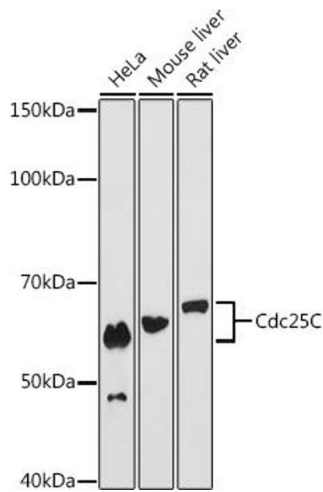
Storage: -20 °C

Storage Comment: Store at -20°C. Avoid freeze / thaw cycles.



Immunofluorescence

Image 1. Immunofluorescence analysis of HeLa cells using Cdc25C Rabbit mAb (ABIN7266251) at dilution of 1:100 (40x lens). Blue: DAPI for nuclear staining.



Western Blotting

Image 2. Western blot analysis of extracts of various cell lines, using Cdc25C antibody (ABIN7266251) at 1:1000 dilution. Secondary antibody: HRP Goat Anti-Rabbit IgG (H+L) (ABIN1684268 and ABIN3020597) at 1:10000 dilution. Lysates/proteins: 25 µg per lane. Blocking buffer: 3 % nonfat dry milk in TBST. Detection: ECL Basic Kit (RM00020). Exposure time: 180s.