



Datasheet for ABIN7266252

## anti-CDC34 antibody



[Go to Product page](#)

### 1 Image

#### Overview

Quantity:	100 µL
Target:	CDC34
Reactivity:	Human
Host:	Rabbit
Clonality:	Monoclonal
Conjugate:	This CDC34 antibody is un-conjugated
Application:	Western Blotting (WB)

#### Product Details

Purpose:	CDC34 Rabbit mAb
Immunogen:	A synthesized peptide derived from human CDC34
Isotype:	IgG
Cross-Reactivity:	Human, Mouse, Rat
Characteristics:	Monoclonal Antibodies
Purification:	Affinity purification

#### Target Details

Target:	CDC34
Alternative Name:	CDC34 ( <a href="#">CDC34 Products</a> )
Background:	The protein encoded by this gene is a member of the ubiquitin-conjugating enzyme family.

## Target Details

---

Ubiquitin-conjugating enzyme catalyzes the covalent attachment of ubiquitin to other proteins. This protein is a part of the large multiprotein complex, which is required for ubiquitin-mediated degradation of cell cycle G1 regulators, and for the initiation of DNA replication. [provided by RefSeq, Jul 2008],E2-CDC34, UBC3, UBCH3, UBE2R1,Cell Biology & Developmental Biology,Epigenetics & Nuclear Signaling,Ubiquitin,Ubiquitin\_Ubiquitin-Proteasome Signaling Pathway,CDC34

---

Molecular Weight: 35kDa

---

Gene ID: 997

---

UniProt: [P49427](#)

## Application Details

---

---

Application Notes: WB,1:500 - 1:2000

---

Restrictions: For Research Use only

## Handling

---

---

Format: Liquid

---

Buffer: PBS with 0.02 % sodium azide,0.05 % BSA,50 % glycerol, pH 7.3.

---

Preservative: Sodium azide

---

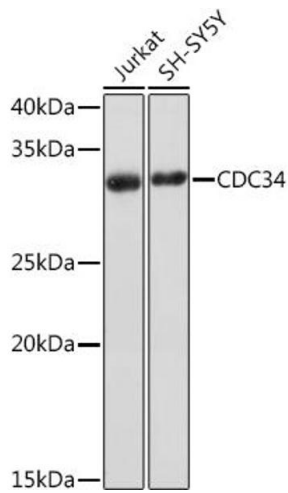
Precaution of Use: This product contains Sodium azide: a POISONOUS AND HAZARDOUS SUBSTANCE which should be handled by trained staff only.

---

Storage: -20 °C

---

Storage Comment: Store at -20°C. Avoid freeze / thaw cycles.



### Western Blotting

**Image 1.** Western blot analysis of extracts of various cell lines, using CDC34 Rabbit mAb (ABIN7266252) at 1:1000 dilution. Secondary antibody: HRP Goat Anti-Rabbit IgG (H+L) (ABIN1684268 and ABIN3020597) at 1:10000 dilution. Lysates/proteins: 25 µg per lane. Blocking buffer: 3 % nonfat dry milk in TBST. Detection: ECL Basic Kit (RM00020). Exposure time: 3 min.