

Datasheet for ABIN7266254  
**anti-CDC37 antibody (pSer13)**



[Go to Product page](#)

2 Images

## Overview

Quantity:	100 µL
Target:	CDC37
Binding Specificity:	pSer13
Reactivity:	Human
Host:	Rabbit
Clonality:	Monoclonal
Conjugate:	This CDC37 antibody is un-conjugated
Application:	Western Blotting (WB)

## Product Details

Purpose:	Phospho-CDC37-S13 Rabbit mAb
Immunogen:	A phospho specific peptide corresponding to residues surrounding S13 of human Phospho-CDC37-S13
Isotype:	IgG
Cross-Reactivity:	Human, Mouse, Rat
Characteristics:	Phosphorylated Antibodies
Purification:	Affinity purification

## Target Details

Target:	CDC37
---------	-------

## Target Details

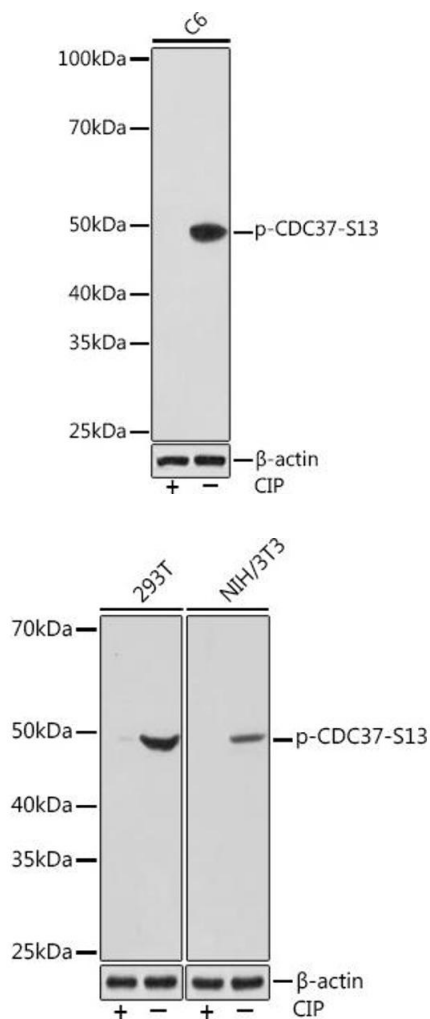
Alternative Name:	CDC37 ( <a href="#">CDC37 Products</a> )
Background:	The protein encoded by this gene is highly similar to Cdc 37, a cell division cycle control protein of <i>Sacchomyces cerevisiae</i> . This protein is a molecular chaperone with specific function in cell signal transduction. It has been shown to form complex with Hsp90 and a variety of protein kinases including CDK4, CDK6, SRC, RAF-1, MOK, as well as eIF2 alpha kinases. It is thought to play a critical role in directing Hsp90 to its target kinases. [provided by RefSeq, Jul 2008],P50CDC37,Apoptosis,Apoptosis_Inhibition of Apoptosis,Cell Biology & Developmental Biology,Cell Cycle,Endocrine & Metabolism,Epigenetics & Nuclear Signaling,Kinase,Mitochondrial metabolism,Signal Transduction,CDC37
Molecular Weight:	50kDa
Gene ID:	11140
UniProt:	<a href="#">Q16543</a>

## Application Details

Application Notes:	WB,1:500 - 1:2000
Restrictions:	For Research Use only

## Handling

Format:	Liquid
Buffer:	PBS with 0.02 % sodium azide,0.05 % BSA,50 % glycerol, pH 7.3.
Preservative:	Sodium azide
Precaution of Use:	This product contains Sodium azide: a POISONOUS AND HAZARDOUS SUBSTANCE which should be handled by trained staff only.
Storage:	-20 °C
Storage Comment:	Store at -20°C. Avoid freeze / thaw cycles.



### Western Blotting

**Image 1.** Western blot analysis of extracts of C6 cells, using Phospho-CDC37-S13 Rabbit mAb (ABIN7266254) at 1:1000 dilution. C6 cells were treated by CIP (20 uL/400 μL) at 37 °C for 1 hour. Secondary antibody: HRP Goat Anti-Rabbit IgG (H+L) (ABIN1684268 and ABIN3020597) at 1:10000 dilution. Lysates/proteins: 25 μg per lane. Blocking buffer: 3 % BSA. Detection: ECL Basic Kit (RM00020). Exposure time: 3 min.

### Western Blotting

**Image 2.** Western blot analysis of extracts of various cell lines, using Phospho-CDC37-S13 Rabbit mAb (ABIN7266254) at 1:1000 dilution. Both 293T cells and NIH/3T3 cells were treated by CIP (20 uL/400 μL) at 37 °C for 1 hour. Secondary antibody: HRP Goat Anti-Rabbit IgG (H+L) (ABIN1684268 and ABIN3020597) at 1:10000 dilution. Lysates/proteins: 25 μg per lane. Blocking buffer: 3 % BSA. Detection: ECL Basic Kit (RM00020). Exposure time: 10s.