

Datasheet for ABIN7266255

**anti-CDC40 antibody**

## 4 Images

[Go to Product page](#)

## Overview

Quantity:	100 µL
Target:	CDC40
Reactivity:	Human
Host:	Rabbit
Clonality:	Monoclonal
Conjugate:	This CDC40 antibody is un-conjugated
Application:	Western Blotting (WB), Immunohistochemistry (IHC)

## Product Details

Purpose:	CDC40 Rabbit mAb
Immunogen:	A synthesized peptide derived from human CDC40
Isotype:	IgG
Cross-Reactivity:	Human, Mouse, Rat
Characteristics:	Monoclonal Antibodies
Purification:	Affinity purification

## Target Details

Target:	CDC40
Alternative Name:	CDC40 ( <a href="#">CDC40 Products</a> )
Background:	Pre-mRNA splicing occurs in two sequential transesterification steps. The protein encoded by

## Target Details

this gene is found to be essential for the catalytic step II in pre-mRNA splicing process. It is found in the spliceosome, and contains seven WD repeats, which function in protein-protein interactions. This protein has a sequence similarity to yeast Prp17 protein, which functions in two different cellular processes: pre-mRNA splicing and cell cycle progression. It suggests that this protein may play a role in cell cycle progression. [provided by RefSeq, Jul 2008],EHB3, PRP17, PRPF17,Cancer,Cell Biology & Developmental Biology,Cell Cycle,Epigenetics & Nuclear Signaling,RNA Binding,CDC40

Molecular Weight: 74kDa

Gene ID: 51362

UniProt: [O60508](#)

Pathways: [Ribonucleoprotein Complex Subunit Organization](#)

## Application Details

Application Notes: WB,1:500 - 1:2000,IHC,1:50 - 1:200

Restrictions: For Research Use only

## Handling

Format: Liquid

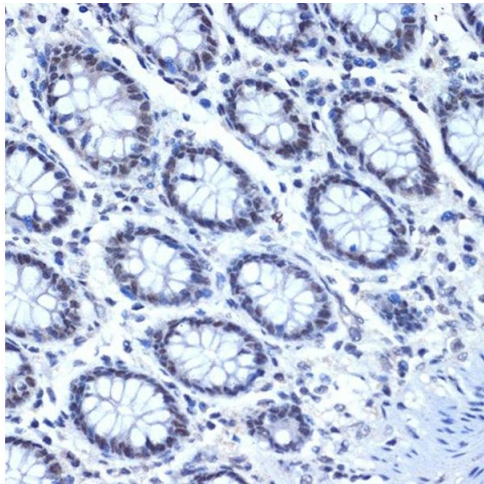
Buffer: PBS with 0.02 % sodium azide,0.05 % BSA,50 % glycerol, pH 7.3.

Preservative: Sodium azide

Precaution of Use: This product contains Sodium azide: a POISONOUS AND HAZARDOUS SUBSTANCE which should be handled by trained staff only.

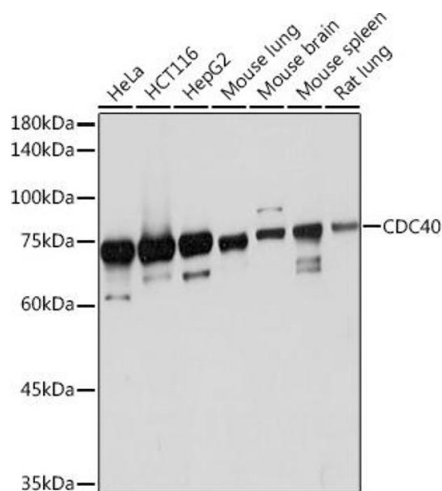
Storage: -20 °C

Storage Comment: Store at -20°C. Avoid freeze / thaw cycles.



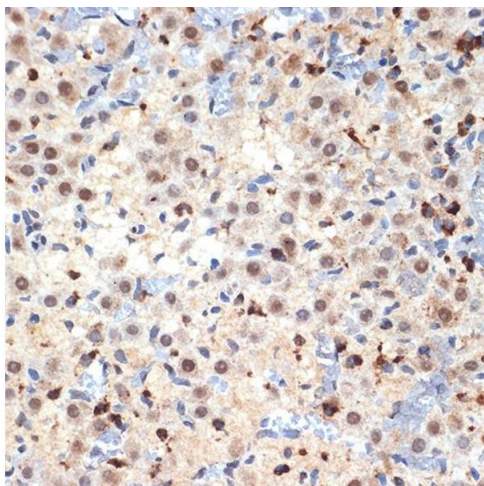
### Immunohistochemistry

**Image 1.** Immunohistochemistry of paraffin-embedded human colon using CDC40 Rabbit mAb (ABIN7266255) at dilution of 1:100 (40x lens). Perform microwave antigen retrieval with 10 mM Tris/EDTA buffer pH 9.0 before commencing with IHC staining protocol.



### Western Blotting

**Image 2.** Western blot analysis of extracts of various cell lines, using CDC40 Rabbit mAb (ABIN7266255) at 1:1000 dilution. Secondary antibody: HRP Goat Anti-Rabbit IgG (H+L) (ABIN1684268 and ABIN3020597) at 1:10000 dilution. Lysates/proteins: 25 µg per lane. Blocking buffer: 3 % nonfat dry milk in TBST. Detection: ECL Basic Kit (RM00020). Exposure time: 10s.



### Immunohistochemistry

**Image 3.** Immunohistochemistry of paraffin-embedded rat ovary using CDC40 Rabbit mAb (ABIN7266255) at dilution of 1:100 (40x lens). Perform microwave antigen retrieval with 10 mM Tris/EDTA buffer pH 9.0 before commencing with IHC staining protocol.

Please check the [product details page](#) for more images. Overall 4 images are available for ABIN7266255.