

Datasheet for ABIN7266260  
**anti-CDC6 antibody (pSer54)**[Go to Product page](#)

## 1 Image

## Overview

Quantity:	100 µL
Target:	CDC6
Binding Specificity:	pSer54
Reactivity:	Human
Host:	Rabbit
Clonality:	Monoclonal
Conjugate:	This CDC6 antibody is un-conjugated
Application:	Western Blotting (WB)

## Product Details

Purpose:	Phospho-Cdc6-S54 Rabbit mAb
Immunogen:	A phospho specific peptide corresponding to residues surrounding S54 of human Cdc6
Isotype:	IgG
Cross-Reactivity:	Human, Mouse
Characteristics:	Phosphorylated Antibodies
Purification:	Affinity purification

## Target Details

Target:	CDC6
Alternative Name:	CDC6 ( <a href="#">CDC6 Products</a> )

## Target Details

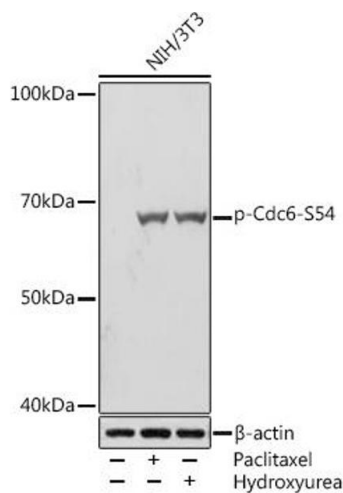
Background:	The protein encoded by this gene is highly similar to <i>Saccharomyces cerevisiae</i> Cdc6, a protein essential for the initiation of DNA replication. This protein functions as a regulator at the early steps of DNA replication. It localizes in cell nucleus during cell cycle G1, but translocates to the cytoplasm at the start of S phase. The subcellular translocation of this protein during cell cycle is regulated through its phosphorylation by Cdk. Transcription of this protein was reported to be regulated in response to mitogenic signals through transcriptional control mechanism involving E2F proteins. [provided by RefSeq, Jul 2008],CDC18L, HsCDC18, HsCDC6, MGORS5,Cell Biology & Developmental Biology,Cell Cycle,Epigenetics & Nuclear Signaling,CDC6
Molecular Weight:	63kDa
Gene ID:	990
UniProt:	<a href="#">Q99741</a>
Pathways:	<a href="#">DNA Replication</a> , <a href="#">Synthesis of DNA</a>

## Application Details

Application Notes:	WB,1:500 - 1:2000
Restrictions:	For Research Use only

## Handling

Format:	Liquid
Buffer:	PBS with 0.02 % sodium azide,0.05 % BSA,50 % glycerol, pH 7.3.
Preservative:	Sodium azide
Precaution of Use:	This product contains Sodium azide: a POISONOUS AND HAZARDOUS SUBSTANCE which should be handled by trained staff only.
Storage:	-20 °C
Storage Comment:	Store at -20°C. Avoid freeze / thaw cycles.



### Western Blotting

**Image 1.** Western blot analysis of extracts of NIH/3T3 cells, using Phospho-Cdc6-S54 Rabbit mAb (ABIN7266260) at 1:1000 dilution. NIH/3T3 cells were treated by Paclitaxel (1  $\mu$ M) at 37 °C for 20 hours. NIH/3T3 cells were treated by Hydroxyurea (4 mM) at 37 °C for 20 hours. Secondary antibody: HRP Goat Anti-Rabbit IgG (H+L) (ABIN1684268 and ABIN3020597) at 1:10000 dilution. Lysates/proteins: 25  $\mu$ g per lane. Blocking buffer: 3 % BSA. Detection: ECL Basic Kit (RM00020). Exposure time: 5s.