



[Go to Product page](#)

Datasheet for ABIN7266273

anti-Centromere Protein C Pseudogene 1 (CENPCP1) antibody

2 Images

Overview

Quantity:	100 µL
Target:	Centromere Protein C Pseudogene 1 (CENPCP1)
Reactivity:	Human
Host:	Rabbit
Clonality:	Monoclonal
Conjugate:	Un-conjugated
Application:	Western Blotting (WB), Immunofluorescence (IF)

Product Details

Purpose:	CENPC Rabbit mAb
Immunogen:	A synthesized peptide derived from human CENPC
Isotype:	IgG
Cross-Reactivity:	Human, Mouse, Rat
Characteristics:	Monoclonal Antibodies
Purification:	Affinity purification

Target Details

Target:	Centromere Protein C Pseudogene 1 (CENPCP1)
Alternative Name:	CENPC (CENPCP1 Products)
Background:	Centromere protein C 1 is a centromere autoantigen and a component of the inner kinetochore

Target Details

plate. The protein is required for maintaining proper kinetochore size and a timely transition to anaphase. A putative pseudogene exists on chromosome 12. [provided by RefSeq, Jul 2008],CENP-C, CENPC1, MIF2, hcp-4,Cell Biology & Developmental Biology,Cell Cycle,Cell Cycle_Centromere,Epigenetics & Nuclear Signaling,CENPC

Molecular Weight: 107kDa

Gene ID: 1060

UniProt: [Q03188](#)

Application Details

Application Notes: WB,1:500 - 1:2000,IF,1:50 - 1:200

Restrictions: For Research Use only

Handling

Format: Liquid

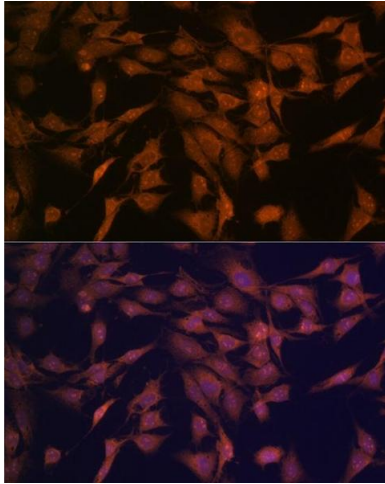
Buffer: PBS with 0.02 % sodium azide,0.05 % BSA,50 % glycerol, pH 7.3.

Preservative: Sodium azide

Precaution of Use: This product contains Sodium azide: a POISONOUS AND HAZARDOUS SUBSTANCE which should be handled by trained staff only.

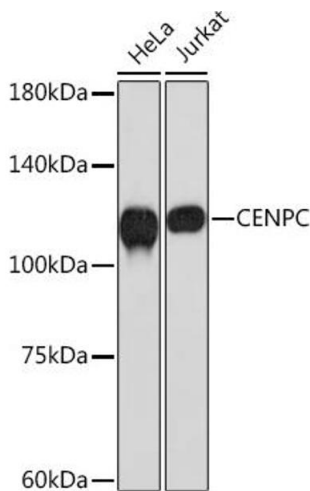
Storage: -20 °C

Storage Comment: Store at -20°C. Avoid freeze / thaw cycles.



Immunofluorescence

Image 1. Immunofluorescence analysis of C6 cells using CENPC Rabbit mAb (ABIN7266273) at dilution of 1:100 (40x lens). Blue: DAPI for nuclear staining.



Western Blotting

Image 2. Western blot analysis of extracts of various cell lines, using CENPC Rabbit mAb (ABIN7266273) at 1:1000 dilution. Secondary antibody: HRP Goat Anti-Rabbit IgG (H+L) (ABIN1684268 and ABIN3020597) at 1:10000 dilution. Lysates/proteins: 25 µg per lane. Blocking buffer: 3 % nonfat dry milk in TBST. Detection: ECL Basic Kit (RM00020). Exposure time: 30s.