

Datasheet for ABIN7266281
anti-CEP85 antibody (AA 130-430)



[Go to Product page](#)

3 Images

Overview

| | |
|----------------------|--|
| Quantity: | 100 µL |
| Target: | CEP85 |
| Binding Specificity: | AA 130-430 |
| Reactivity: | Human |
| Host: | Rabbit |
| Clonality: | Polyclonal |
| Conjugate: | This CEP85 antibody is un-conjugated |
| Application: | Western Blotting (WB), Immunofluorescence (IF) |

Product Details

| | |
|-------------------|---|
| Purpose: | CEP85 Rabbit pAb |
| Immunogen: | Recombinant fusion protein containing a sequence corresponding to amino acids 130-430 of human CEP85 (NP_073615.2). |
| Sequence: | TRNGDLGAMK HSPGLSRDLM YFSGATGENG IEQSWFPAVG HERQEEARKF DIPSMESTLN QSAMMETLYS DPHHRVRFHN PRTSTSKELY RVLPEAKKAP GSGAVFERNG PHSNSSGVLP LGLQPAPGLS KPLPSQVWQP SPDTWHPREQ SCELSTCRQQ LELIRLQMEQ MQLQNGAICH HPAAFGPSLP ILEPAQWISI LNSNEHLLKE KELLIDKQRK HISQLEQKVR ESELQVHSAL LGRPAPFGDV CLLRLQELQR ENTFLRAQFA QKTEALSREK IDLEKKLSAS EVEVQLIRES L |
| Isotype: | IgG |
| Cross-Reactivity: | Human, Mouse, Rat |
| Characteristics: | Polyclonal Antibodies |

Product Details

Purification: Affinity purification

Target Details

Target: CEP85

Alternative Name: CEP85 ([CEP85 Products](#))

Background: This gene encodes a protein that belongs to the centrosome-associated family of proteins. The centrosome is a subcellular organelle in the animal cell that functions as a microtubule organizing center and is involved in cell-cycle progression. Alternate splicing results in multiple transcript variants.,CEP85,CCDC21,Cell Biology & Developmental Biology,Cell Cycle,Centrosome,CEP85

Molecular Weight: 22kDa/80kDa/85kDa

Gene ID: 64793

UniProt: [Q6P2H3](#)

Application Details

Application Notes: WB,1:500 - 1:2000,IF,1:50 - 1:200

Restrictions: For Research Use only

Handling

Format: Liquid

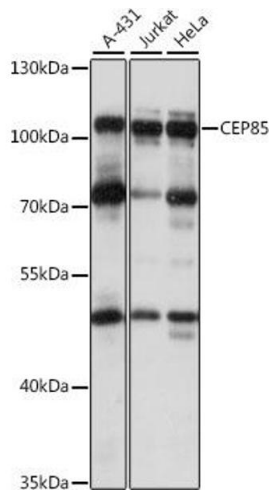
Buffer: PBS with 0.02 % sodium azide,50 % glycerol, pH 7.3.

Preservative: Sodium azide

Precaution of Use: This product contains Sodium azide: a POISONOUS AND HAZARDOUS SUBSTANCE which should be handled by trained staff only.

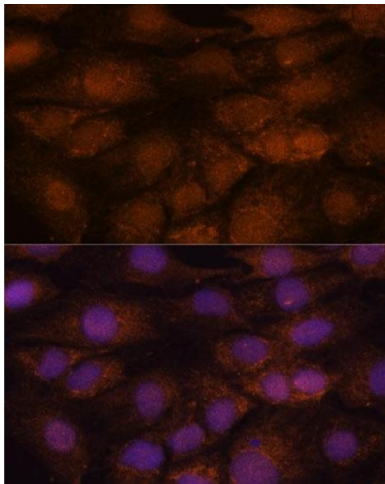
Storage: -20 °C

Storage Comment: Store at -20°C. Avoid freeze / thaw cycles.



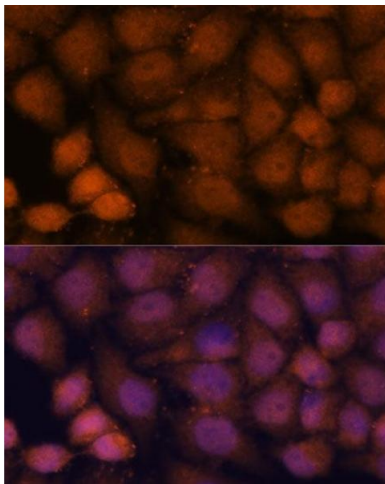
Western Blotting

Image 1. Western blot analysis of extracts of various cell lines, using CEP85 antibody (ABIN7266281) at 1:1000 dilution. Secondary antibody: HRP Goat Anti-Rabbit IgG (H+L) (ABIN1684268 and ABIN3020597) at 1:10000 dilution. Lysates/proteins: 25 µg per lane. Blocking buffer: 3 % nonfat dry milk in TBST. Detection: ECL Basic Kit (RM00020). Exposure time: 10s.



Immunofluorescence

Image 2. Immunofluorescence analysis of C6 cells using CEP85 antibody (ABIN7266281) at dilution of 1:100. Blue: DAPI for nuclear staining.



Immunofluorescence

Image 3. Immunofluorescence analysis of HeLa cells using CEP85 antibody (ABIN7266281) at dilution of 1:100. Blue: DAPI for nuclear staining.