



[Go to Product page](#)

Datasheet for ABIN7266283
anti-CERKL antibody (AA 359-558)

1 Image

Overview

Quantity:	100 µL
Target:	CERKL
Binding Specificity:	AA 359-558
Reactivity:	Human
Host:	Rabbit
Clonality:	Polyclonal
Conjugate:	This CERKL antibody is un-conjugated
Application:	Western Blotting (WB)

Product Details

Purpose:	CERKL Rabbit pAb
Immunogen:	Recombinant fusion protein containing a sequence corresponding to amino acids 359-558 of human CERKL (NP_001025482.1).
Sequence:	LAEKYRWMSPLNQRDFAVVKALAKLKAEDCEISFLPFNSSDDVQERRAQQSPKSDCNDQW QMIQQQFLNVSIMAIPCLCSVAPRGLAPNTRLNNGSMALIARNTSRPEFIKHLKRYASV KNQFNFPFVE TYTVEEVKVH PRNNTGGYNP EEEEDETASE NCFPWNVDGD LMEVASEVHI RLHPRLISLY GGSMEEMIPK
Isotype:	IgG
Cross-Reactivity:	Mouse
Characteristics:	Polyclonal Antibodies

Product Details

Purification: Affinity purification

Target Details

Target: CERKL

Alternative Name: CERKL ([CERKL Products](#))

Background: This gene was initially identified as a locus (RP26) associated with an autosomal recessive form of retinitis pigmentosa (arRP) disease. This gene encodes a protein with ceramide kinase-like domains, however, the protein does not phosphorylate ceramide and its target substrate is currently unknown. This protein may be a negative regulator of apoptosis in photoreceptor cells. Mutations in this gene cause a form of retinitis pigmentosa characterized by autosomal recessive cone and rod dystrophy (arCRD). Alternative splicing of this gene results in multiple transcript variants encoding different isoforms and non-coding transcripts.,CERKL,RP26,Signal Transduction,Kinase,Cell Biology & Developmental Biology,Apoptosis,Neuroscience,CERKL

Molecular Weight: 19kDa, 24kDa, 42-62kDa

Gene ID: 375298

UniProt: [Q49MI3](#)

Application Details

Application Notes: WB,1:500 - 1:2000

Restrictions: For Research Use only

Handling

Format: Liquid

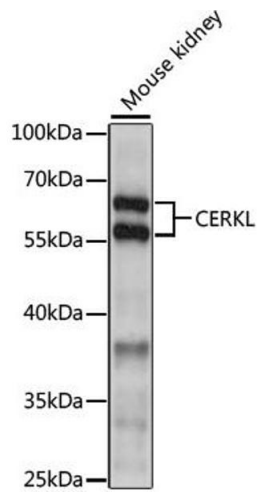
Buffer: PBS with 0.02 % sodium azide,50 % glycerol, pH 7.3.

Preservative: Sodium azide

Precaution of Use: This product contains Sodium azide: a POISONOUS AND HAZARDOUS SUBSTANCE which should be handled by trained staff only.

Storage: -20 °C

Storage Comment: Store at -20°C. Avoid freeze / thaw cycles.



Western Blotting

Image 1. Western blot analysis of extracts of mouse kidney, using CERKL antibody (ABIN7266283) at 1:1000 dilution. Secondary antibody: HRP Goat Anti-Rabbit IgG (H+L) (ABIN1684268 and ABIN3020597) at 1:10000 dilution. Lysates/proteins: 25 µg per lane. Blocking buffer: 3 % nonfat dry milk in TBST. Detection: ECL Basic Kit (RM00020). Exposure time: 30s.