



[Go to Product page](#)

Datasheet for ABIN7266285

anti-CLN8 antibody

2 Images

Overview

Quantity:	100 µL
Target:	CLN8
Reactivity:	Human
Host:	Rabbit
Clonality:	Polyclonal
Conjugate:	This CLN8 antibody is un-conjugated
Application:	Western Blotting (WB), Immunohistochemistry (IHC)

Product Details

Purpose:	CLN8 Rabbit pAb
Immunogen:	A synthetic peptide of human CLN8.
Isotype:	IgG
Cross-Reactivity:	Human
Characteristics:	Polyclonal Antibodies
Purification:	Affinity purification

Target Details

Target:	CLN8
Alternative Name:	CLN8 (CLN8 Products)
Background:	This gene encodes a transmembrane protein belonging to a family of proteins containing TLC

Target Details

domains, which are postulated to function in lipid synthesis, transport, or sensing. The protein localizes to the endoplasmic reticulum (ER), and may recycle between the ER and ER-Golgi intermediate compartment. Mutations in this gene are associated with progressive epilepsy with mental retardation (EMPR), which is a subtype of neuronal ceroid lipofuscinoses (NCL). Patients with mutations in this gene have altered levels of sphingolipid and phospholipids in the brain.,CLN8,C8orf61,EPMR,Cancer,Signal Transduction,Endocrine & Metabolism,Lipid Metabolism,Neuroscience,Neurodegenerative Diseases,CLN8

Gene ID: 2055

UniProt: [Q9UBY8](#)

Pathways: [Regulation of Cell Size](#), [Dicarboxylic Acid Transport](#)

Application Details

Application Notes: WB,1:500 - 1:2000,IHC,1:50 - 1:300

Restrictions: For Research Use only

Handling

Format: Liquid

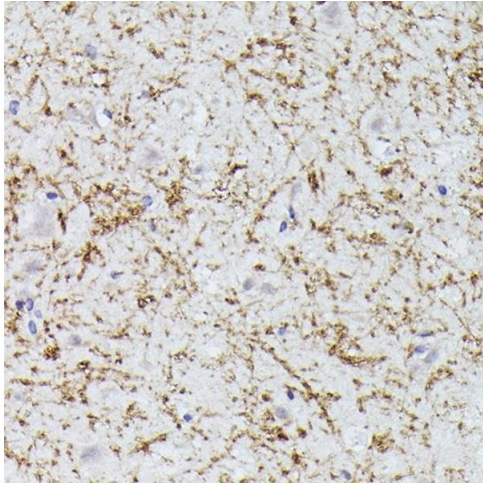
Buffer: PBS with 0.02 % sodium azide,50 % glycerol, pH 7.3.

Preservative: Sodium azide

Precaution of Use: This product contains Sodium azide: a POISONOUS AND HAZARDOUS SUBSTANCE which should be handled by trained staff only.

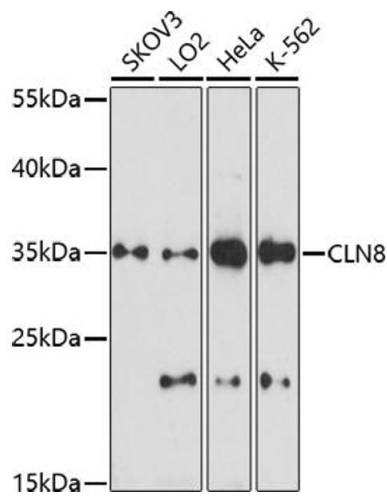
Storage: -20 °C

Storage Comment: Store at -20°C. Avoid freeze / thaw cycles.



Immunohistochemistry

Image 1. Immunohistochemistry of paraffin-embedded human brain using CLN8 antibody (ABIN7266285) at dilution of 1:300 (40x lens). Perform high pressure antigen retrieval with 10 mM citrate buffer pH 6.0 before commencing with IHC staining protocol.



Western Blotting

Image 2. Western blot analysis of extracts of various cell lines, using CLN8 antibody (ABIN7266285) at 1:1000 dilution. Secondary antibody: HRP Goat Anti-Rabbit IgG (H+L) (ABIN1684268 and ABIN3020597) at 1:10000 dilution. Lysates/proteins: 25 µg per lane. Blocking buffer: 3 % nonfat dry milk in TBST. Detection: ECL Enhanced Kit (RM00021). Exposure time: 90s.