



[Go to Product page](#)

Datasheet for ABIN7266290
anti-CHMP2B antibody

2 Images

Overview

Quantity:	100 µL
Target:	CHMP2B
Reactivity:	Human
Host:	Rabbit
Clonality:	Monoclonal
Conjugate:	This CHMP2B antibody is un-conjugated
Application:	Western Blotting (WB), Immunohistochemistry (IHC)

Product Details

Purpose:	CHMP2B Rabbit mAb
Immunogen:	Recombinant protein of human CHMP2B.
Isotype:	IgG
Cross-Reactivity:	Human, Mouse, Rat
Characteristics:	Monoclonal Antibodies
Purification:	Affinity purification

Target Details

Target:	CHMP2B
Alternative Name:	CHMP2B (CHMP2B Products)
Background:	This gene encodes a component of the heteromeric ESCRT-III complex (Endosomal Sorting

Target Details

Complex Required for Transport III) that functions in the recycling or degradation of cell surface receptors. ESCRT-III functions in the concentration and invagination of ubiquitinated endosomal cargos into intraluminal vesicles. The protein encoded by this gene is found as a monomer in the cytosol or as an oligomer in ESCRT-III complexes on endosomal membranes. It is expressed in neurons of all major regions of the brain. Mutations in this gene result in one form of familial frontotemporal lobar degeneration.,CHMP2B, ALS17, CHMP2.5, DMT1, VPS2-2, VPS2B, charged multivesicular body protein 2b,Signal Transduction,Cell Biology & Developmental Biology,Autophagy,Neuroscience,Neurodegenerative Diseases,Regulators,CHMP2B

Molecular Weight: 28kDa

Gene ID: 25978

UniProt: [Q9UQN3](#)

Application Details

Application Notes: WB,1:500 - 1:2000,IHC,1:50 - 1:200

Restrictions: For Research Use only

Handling

Format: Liquid

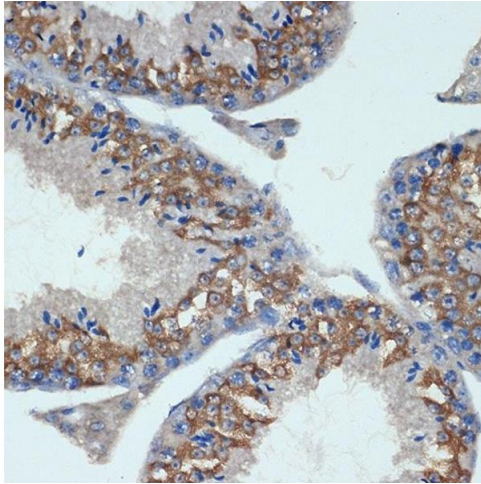
Buffer: PBS with 0.02 % sodium azide,0.05 % BSA,50 % glycerol, pH 7.3.

Preservative: Sodium azide

Precaution of Use: This product contains Sodium azide: a POISONOUS AND HAZARDOUS SUBSTANCE which should be handled by trained staff only.

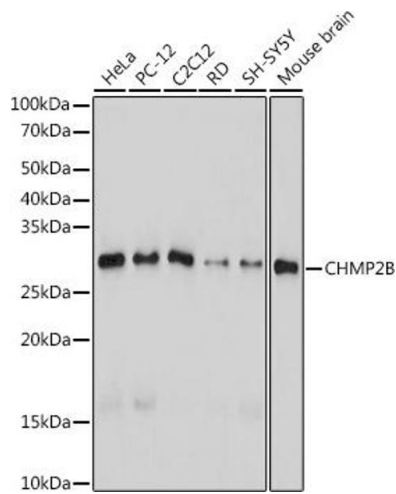
Storage: -20 °C

Storage Comment: Store at -20°C. Avoid freeze / thaw cycles.



Immunohistochemistry

Image 1. Immunohistochemistry of paraffin-embedded mouse testis using CHMP2B Rabbit mAb (ABIN7266290) at dilution of 1:100 (40x lens). Perform microwave antigen retrieval with 10 mM Tris/EDTA buffer pH 9.0 before commencing with IHC staining protocol.



Western Blotting

Image 2. Western blot analysis of extracts of various cell lines, using CHMP2B antibody (ABIN7266290) at 1:1000 dilution. Secondary antibody: HRP Goat Anti-Rabbit IgG (H+L) (ABIN1684268 and ABIN3020597) at 1:10000 dilution. Lysates/proteins: 25 µg per lane. Blocking buffer: 3 % nonfat dry milk in TBST. Detection: ECL Basic Kit (RM00020). Exposure time: 10s.