

Datasheet for ABIN7266291
anti-CHMP3 antibody



[Go to Product page](#)

1 Image

Overview

Quantity:	100 µL
Target:	CHMP3
Reactivity:	Human
Host:	Rabbit
Clonality:	Monoclonal
Conjugate:	This CHMP3 antibody is un-conjugated
Application:	Western Blotting (WB)

Product Details

Purpose:	VPS24 Rabbit mAb
Immunogen:	A synthesized peptide derived from human VPS24
Isotype:	IgG
Cross-Reactivity:	Human, Mouse, Rat
Characteristics:	Monoclonal Antibodies
Purification:	Affinity purification

Target Details

Target:	CHMP3
Alternative Name:	CHMP3 (CHMP3 Products)
Background:	This gene encodes a protein that sorts transmembrane proteins into lysosomes/vacuoles via

Target Details

the multivesicular body (MVB) pathway. This protein, along with other soluble coiled-coil containing proteins, forms part of the ESCRT-III protein complex that binds to the endosomal membrane and recruits additional cofactors for protein sorting into the MVB. This protein may also co-immunoprecipitate with a member of the IFG-binding protein superfamily. Alternative splicing results in multiple transcript variants. Read-through transcription also exists between this gene and the upstream ring finger protein 103 (RNF103) gene. [provided by RefSeq, Nov 2010],CGI-149, NEDF, VPS24,Autophagy,Autophagy_Regulator,Cell Biology & Developmental Biology,Signal Transduction,CHMP3

Molecular Weight: 29kDa

Gene ID: 51652

UniProt: [Q9Y3E7](#)

Application Details

Application Notes: WB,1:500 - 1:2000

Restrictions: For Research Use only

Handling

Format: Liquid

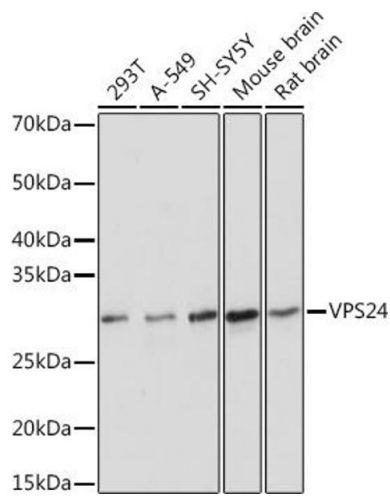
Buffer: PBS with 0.02 % sodium azide,0.05 % BSA,50 % glycerol, pH 7.3.

Preservative: Sodium azide

Precaution of Use: This product contains Sodium azide: a POISONOUS AND HAZARDOUS SUBSTANCE which should be handled by trained staff only.

Storage: -20 °C

Storage Comment: Store at -20°C. Avoid freeze / thaw cycles.



Western Blotting

Image 1. Western blot analysis of extracts of various cell lines, using VPS24 Rabbit mAb (ABIN7266291) at 1:1000 dilution. Secondary antibody: HRP Goat Anti-Rabbit IgG (H+L) (ABIN1684268 and ABIN3020597) at 1:10000 dilution. Lysates/proteins: 25 µg per lane. Blocking buffer: 3 % nonfat dry milk in TBST. Detection: ECL Basic Kit (RM00020). Exposure time: 5s.