

Datasheet for ABIN7266301
anti-CCL20 antibody (AA 1-95)



[Go to Product page](#)

1 Image

Overview

Quantity:	100 µL
Target:	CCL20
Binding Specificity:	AA 1-95
Reactivity:	Human
Host:	Rabbit
Clonality:	Polyclonal
Conjugate:	This CCL20 antibody is un-conjugated
Application:	Western Blotting (WB)

Product Details

Purpose:	CCL20 Rabbit pAb
Immunogen:	A synthetic peptide corresponding to a sequence within amino acids 1-95 of human CCL20 (NP_001123518.1).
Sequence:	MCCTKSLLLA ALMSVLLLHL CGESEASNFD CCLGYTDRIL HPKFIVGFTR QLANEGCDIN AIIFHTKKKL SVCANPKQTW VKYIVRLLSK KVKNM
Isotype:	IgG
Cross-Reactivity:	Human
Characteristics:	Polyclonal Antibodies
Purification:	Affinity purification

Target Details

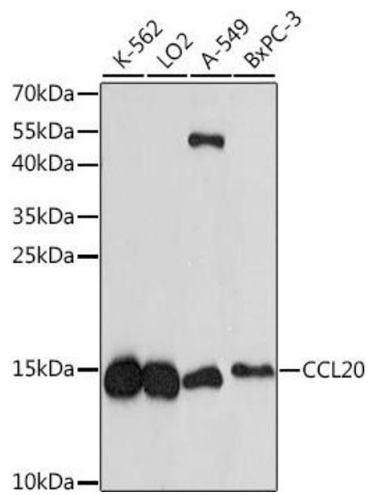
Target:	CCL20
Alternative Name:	CCL20 (CCL20 Products)
Background:	<p>This antimicrobial gene belongs to the subfamily of small cytokine CC genes. Cytokines are a family of secreted proteins involved in immunoregulatory and inflammatory processes. The CC cytokines are proteins characterized by two adjacent cysteines. The protein encoded by this gene displays chemotactic activity for lymphocytes and can repress proliferation of myeloid progenitors. Two transcript variants encoding different isoforms have been found for this gene.,CCL20,CKb4,Exodus,LARC,MIP-3-alpha,MIP-3a,MIP3A,SCYA20,ST38,Immunology & Inflammation,Cytokines,Cell Intrinsic Innate Immunity Signaling Pathway,Chemokines,Chemokine,CCL20</p>
Molecular Weight:	10kDa
Gene ID:	6364
UniProt:	P78556
Pathways:	The Global Phosphorylation Landscape of SARS-CoV-2 Infection

Application Details

Application Notes:	WB,1:500 - 1:2000
Restrictions:	For Research Use only

Handling

Format:	Liquid
Buffer:	PBS with 0.02 % sodium azide,50 % glycerol, pH 7.3.
Preservative:	Sodium azide
Precaution of Use:	This product contains Sodium azide: a POISONOUS AND HAZARDOUS SUBSTANCE which should be handled by trained staff only.
Storage:	-20 °C
Storage Comment:	Store at -20°C. Avoid freeze / thaw cycles.



Western Blotting

Image 1. Western blot analysis of extracts of various cell lines, using CCL20 antibody (ABIN7266301) at 1:1000 dilution. Secondary antibody: HRP Goat Anti-Rabbit IgG (H+L) (ABIN1684268 and ABIN3020597) at 1:10000 dilution. Lysates/proteins: 25 µg per lane. Blocking buffer: 3 % nonfat dry milk in TBST. Detection: ECL Enhanced Kit (RM00021). Exposure time: 5 min.