

Datasheet for ABIN7266304
anti-CCR2 antibody

2 Images



[Go to Product page](#)

Overview

Quantity:	100 µL
Target:	CCR2
Reactivity:	Human
Host:	Rabbit
Clonality:	Monoclonal
Conjugate:	This CCR2 antibody is un-conjugated
Application:	Western Blotting (WB)

Product Details

Purpose:	CCR2/CKR2 Rabbit mAb
Immunogen:	A synthesized peptide derived from human CCR2/CKR2.
Isotype:	IgG
Cross-Reactivity:	Human, Mouse, Rat
Characteristics:	Monoclonal Antibodies
Purification:	Affinity purification

Target Details

Target:	CCR2
Alternative Name:	CCR2/CKR2 (CCR2 Products)
Background:	This gene encodes two isoforms of a receptor for monocyte chemoattractant protein-1, a

Target Details

chemokine which specifically mediates monocyte chemotaxis. Monocyte chemoattractant protein-1 is involved in monocyte infiltration in inflammatory diseases such as rheumatoid arthritis as well as in the inflammatory response against tumors. The receptors encoded by this gene mediate agonist-dependent calcium mobilization and inhibition of adenylyl cyclase. This gene is located in the chemokine receptor gene cluster region. Two alternatively spliced transcript variants are expressed by the gene.,CCR2, CC-CKR-2, CCR-2, CCR2A, CCR2B, CD192, CKR2, CKR2A, CKR2B, CMKBR2, MCP-1-R, C-C chemokine receptor type 2,Cancer,Signal Transduction,G protein signaling,G-Protein-Coupled Receptors(GPCR),Immunology & Inflammation,CD markers,Cell Intrinsic Innate Immunity Signaling Pathway,Chemokines,Chemokine,Cardiovascular,CCR2/CKR2

Molecular Weight: kDa

Gene ID: 729230

UniProt: [P41597](#)

Pathways: [cAMP Metabolic Process](#), [Regulation of Leukocyte Mediated Immunity](#), [Positive Regulation of Immune Effector Process](#)

Application Details

Application Notes: WB,1:500 - 1:2000

Restrictions: For Research Use only

Handling

Format: Liquid

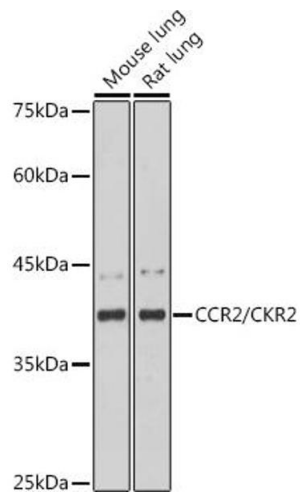
Buffer: PBS with 0.02 % sodium azide,0.05 % BSA,50 % glycerol, pH 7.3.

Preservative: Sodium azide

Precaution of Use: This product contains Sodium azide: a POISONOUS AND HAZARDOUS SUBSTANCE which should be handled by trained staff only.

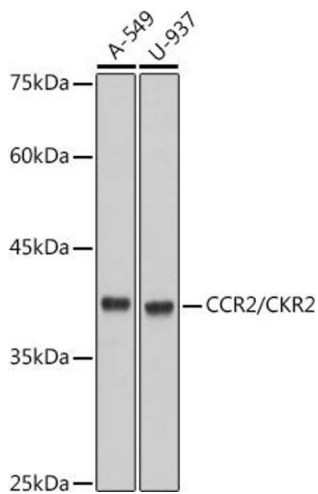
Storage: -20 °C

Storage Comment: Store at -20°C. Avoid freeze / thaw cycles.



Western Blotting

Image 1. Western blot analysis of extracts of various cell lines, using CCR2/CKR2 antibody (ABIN7266304) at 1:1000 dilution. Secondary antibody: HRP Goat Anti-Rabbit IgG (H+L) (ABIN1684268 and ABIN3020597) at 1:10000 dilution. Lysates/proteins: 25 µg per lane. Blocking buffer: 3 % nonfat dry milk in TBST. Detection: ECL Basic Kit (RM00020). Exposure time: 90s.



Western Blotting

Image 2. Western blot analysis of extracts of various cell lines, using CCR2/CKR2 antibody (ABIN7266304) at 1:1000 dilution. Secondary antibody: HRP Goat Anti-Rabbit IgG (H+L) (ABIN1684268 and ABIN3020597) at 1:10000 dilution. Lysates/proteins: 25 µg per lane. Blocking buffer: 3 % nonfat dry milk in TBST. Detection: ECL Basic Kit (RM00020). Exposure time: 3s.