

Datasheet for ABIN7266306
anti-CCR4 antibody (AA 1-100)[Go to Product page](#)

1 Image

Overview

Quantity:	100 µL
Target:	CCR4
Binding Specificity:	AA 1-100
Reactivity:	Human
Host:	Rabbit
Clonality:	Polyclonal
Conjugate:	This CCR4 antibody is un-conjugated
Application:	Western Blotting (WB)

Product Details

Purpose:	CCR4 Rabbit pAb
Immunogen:	A synthetic peptide corresponding to a sequence within amino acids 1-100 of human CCR4 (NP_005499.1).
Sequence:	MNPTDIADTT LDESIYSNYY LYESIPKPCT KEGIKAFGEL FLPPLYSLVF VFGLLGNSVV VLVLFKYKRL RSMTDVYLLN LAISDLLFVF SLPFWGYAA
Isotype:	IgG
Cross-Reactivity:	Human
Characteristics:	Polyclonal Antibodies
Purification:	Affinity purification

Target Details

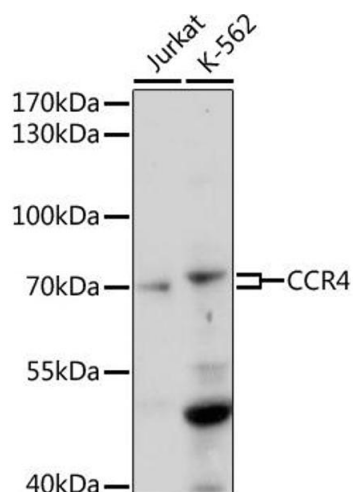
Target:	CCR4
Alternative Name:	CCR4 (CCR4 Products)
Background:	<p>The protein encoded by this gene belongs to the G-protein-coupled receptor family . It is a receptor for the CC chemokine - MIP-1, RANTES, TARC and MCP-1. Chemokines are a group of small polypeptide, structurally related molecules that regulate cell trafficking of various types of leukocytes. The chemokines also play fundamental roles in the development, homeostasis, and function of the immune system, and they have effects on cells of the central nervous system as well as on endothelial cells involved in angiogenesis or angiostasis.,CCR4,CC-CKR-4,CD194,CKR4,CMKBR4,ChemR13,HGCN:14099,K5-5,Signal Transduction,G protein signaling,G-Protein-Coupled Receptors(GPCR),Immunology & Inflammation,CD markers,Cell Intrinsic Innate Immunity Signaling Pathway,Chemokines,Chemokine,Cardiovascular,CCR4</p>
Molecular Weight:	41kDa
Gene ID:	1233
UniProt:	P51679

Application Details

Application Notes:	WB,1:500 - 1:2000
Restrictions:	For Research Use only

Handling

Format:	Liquid
Buffer:	PBS with 0.02 % sodium azide,50 % glycerol, pH 7.3.
Preservative:	Sodium azide
Precaution of Use:	This product contains Sodium azide: a POISONOUS AND HAZARDOUS SUBSTANCE which should be handled by trained staff only.
Storage:	-20 °C
Storage Comment:	Store at -20°C. Avoid freeze / thaw cycles.



Western Blotting

Image 1. Western blot analysis of extracts of various cell lines, using CCR4 antibody (ABIN7266306) at 1:1000 dilution. Secondary antibody: HRP Goat Anti-Rabbit IgG (H+L) (ABIN1684268 and ABIN3020597) at 1:10000 dilution. Lysates/proteins: 25 µg per lane. Blocking buffer: 3 % nonfat dry milk in TBST. Detection: ECL Basic Kit (RM00020). Exposure time: 120s.