

Datasheet for ABIN7266307  
**anti-CCR5 antibody (AA 100-200)**[Go to Product page](#)

## 3 Images

## Overview

Quantity:	100 µL
Target:	CCR5
Binding Specificity:	AA 100-200
Reactivity:	Human
Host:	Rabbit
Clonality:	Polyclonal
Conjugate:	This CCR5 antibody is un-conjugated
Application:	Western Blotting (WB), Immunofluorescence (IF)

## Product Details

Purpose:	CCR5 Rabbit pAb
Immunogen:	A synthetic peptide corresponding to a sequence within amino acids 100-200 of human CCR5 (NP_000570.1).
Isotype:	IgG
Cross-Reactivity:	Human, Mouse, Rat
Characteristics:	Polyclonal Antibodies
Purification:	Affinity purification

## Target Details

Target:	CCR5
---------	------

## Target Details

Alternative Name:	CCR5 ( <a href="#">CCR5 Products</a> )
Background:	<p>This gene encodes a member of the beta chemokine receptor family, which is predicted to be a seven transmembrane protein similar to G protein-coupled receptors. This protein is expressed by T cells and macrophages, and is known to be an important co-receptor for macrophage-tropic virus, including HIV, to enter host cells. Defective alleles of this gene have been associated with the HIV infection resistance. The ligands of this receptor include monocyte chemoattractant protein 2 (MCP-2), macrophage inflammatory protein 1 alpha (MIP-1 alpha), macrophage inflammatory protein 1 beta (MIP-1 beta) and regulated on activation normal T expressed and secreted protein (RANTES). Expression of this gene was also detected in a promyeloblastic cell line, suggesting that this protein may play a role in granulocyte lineage proliferation and differentiation. This gene is located at the chemokine receptor gene cluster region. An allelic polymorphism in this gene results in both functional and non-functional alleles, the reference genome represents the functional allele. Two transcript variants encoding the same protein have been found for this gene.,CKR5, CCR-5, CD195, CKR-5, CCCKR5, CMKBR5, IDDM22, CC-CKR-5,CCR5</p>
Gene ID:	1234
UniProt:	<a href="#">P51681</a>
Pathways:	<a href="#">Cellular Response to Molecule of Bacterial Origin</a> , <a href="#">cAMP Metabolic Process</a> , <a href="#">Regulation of Cell Size</a>

## Application Details

Application Notes:	WB,1:500 - 1:2000,IF,1:50 - 1:200
Restrictions:	For Research Use only

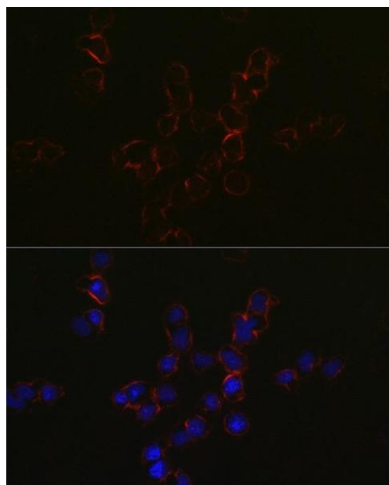
## Handling

Format:	Liquid
Buffer:	PBS with 0.02 % sodium azide,50 % glycerol, pH 7.3.
Preservative:	Sodium azide
Precaution of Use:	This product contains Sodium azide: a POISONOUS AND HAZARDOUS SUBSTANCE which should be handled by trained staff only.
Storage:	-20 °C

## Handling

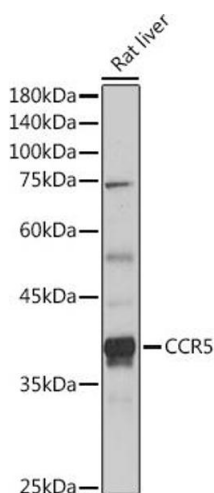
Storage Comment: Store at -20°C. Avoid freeze / thaw cycles.

## Images



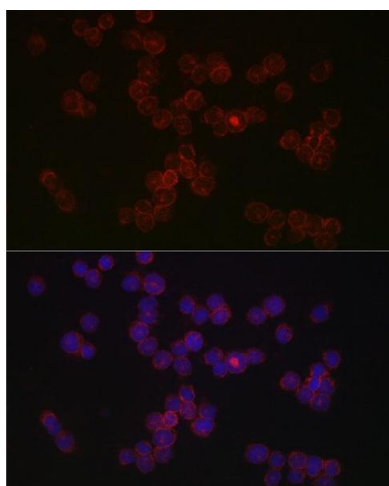
### Immunofluorescence

**Image 1.** Immunofluorescence analysis of Jurkat cells using CCR5 Rabbit pAb (ABIN7266307) at dilution of 1:50 (40x lens). Blue: DAPI for nuclear staining.



### Western Blotting

**Image 2.** Western blot analysis of extracts of Rat liver, using CCR5 antibody (ABIN7266307) at 1:1000 dilution. Secondary antibody: HRP Goat Anti-Rabbit IgG (H+L) (ABIN1684268 and ABIN3020597) at 1:10000 dilution. Lysates/proteins: 25 µg per lane. Blocking buffer: 3 % nonfat dry milk in TBST. Detection: ECL Basic Kit (RM00020). Exposure time: 10s.



### Immunofluorescence

**Image 3.** Immunofluorescence analysis of THP-1 cells using CCR5 Rabbit pAb (ABIN7266307) at dilution of 1:50 (40x lens). Blue: DAPI for nuclear staining.