

Datasheet for ABIN7266308  
**anti-CCR6 antibody (C-Term)**[Go to Product page](#)

## 1 Image

## Overview

Quantity:	100 µL
Target:	CCR6
Binding Specificity:	C-Term
Reactivity:	Human
Host:	Rabbit
Clonality:	Polyclonal
Conjugate:	This CCR6 antibody is un-conjugated
Application:	Western Blotting (WB)

## Product Details

Purpose:	CCR6 Rabbit pAb
Immunogen:	A synthetic peptide corresponding to a sequence within amino acids 300 to the C-terminus of human CCR6 (NP_004358.2).
Sequence:	VTEVLAFLHC CLNPVLYAFI GQKFRNYFLK ILKDLWCVRR KYKSSGFSCA GRYSNISRQ TSETADNDNA SSFTM
Isotype:	IgG
Cross-Reactivity:	Human
Characteristics:	Polyclonal Antibodies
Purification:	Affinity purification

## Target Details

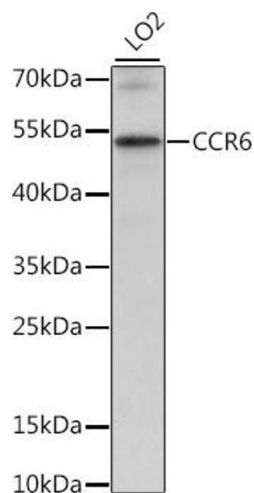
Target:	CCR6
Alternative Name:	CCR6 ( <a href="#">CCR6 Products</a> )
Background:	<p>This gene encodes a member of the beta chemokine receptor family, which is predicted to be a seven transmembrane protein similar to G protein-coupled receptors. The gene is preferentially expressed by immature dendritic cells and memory T cells. The ligand of this receptor is macrophage inflammatory protein 3 alpha (MIP-3 alpha). This receptor has been shown to be important for B-lineage maturation and antigen-driven B-cell differentiation, and it may regulate the migration and recruitment of dendritic and T cells during inflammatory and immunological responses. Alternatively spliced transcript variants that encode the same protein have been described for this gene.,CCR6,BN-1,C-C CKR-6,CC-CKR-6,CCR-6,CD196,CKR-L3,CKRL3,CMKBR6,DCR2,DRY6,GPR29,GPRCY4,STRL22,Signal Transduction,G protein signaling,G-Protein-Coupled Receptors(GPCR),Immunology &amp; Inflammation,CD markers,Cell Intrinsic Innate Immunity Signaling Pathway,Chemokines,Chemokine,CCR6</p>
Molecular Weight:	42kDa
Gene ID:	1235
UniProt:	<a href="#">P51684</a>
Pathways:	<a href="#">cAMP Metabolic Process</a>

## Application Details

Application Notes:	WB,1:500 - 1:2000
Restrictions:	For Research Use only

## Handling

Format:	Liquid
Buffer:	PBS with 0.02 % sodium azide,50 % glycerol, pH 7.3.
Preservative:	Sodium azide
Precaution of Use:	This product contains Sodium azide: a POISONOUS AND HAZARDOUS SUBSTANCE which should be handled by trained staff only.
Storage:	-20 °C
Storage Comment:	Store at -20°C. Avoid freeze / thaw cycles.



### Western Blotting

**Image 1.** Western blot analysis of extracts of LO2 cells, using CCR6 antibody (ABIN7266308) at 1:1000 dilution. Secondary antibody: HRP Goat Anti-Rabbit IgG (H+L) (ABIN1684268 and ABIN3020597) at 1:10000 dilution. Lysates/proteins: 25 µg per lane. Blocking buffer: 3 % nonfat dry milk in TBST. Detection: ECL Basic Kit (RM00020). Exposure time: 10s.