

Datasheet for ABIN7266316  
**anti-CXCL6 antibody (AA 38-114)**

## 2 Images

[Go to Product page](#)

## Overview

Quantity:	100 µL
Target:	CXCL6
Binding Specificity:	AA 38-114
Reactivity:	Human
Host:	Rabbit
Clonality:	Polyclonal
Conjugate:	This CXCL6 antibody is un-conjugated
Application:	Western Blotting (WB)

## Product Details

Purpose:	CXCL6 Rabbit pAb
Immunogen:	Recombinant fusion protein containing a sequence corresponding to amino acids 38-114 of human CXCL6 (NP_002984.1).
Sequence:	GPVSAVLTEL RCTCLRVTLR VNPKTIGKLQ VFPAGPQCSK VEVVASLKNG KQVCLDPEAP FLKKVIQKIL DSGNKKN
Isotype:	IgG
Cross-Reactivity:	Human, Mouse
Characteristics:	Polyclonal Antibodies
Purification:	Affinity purification

## Target Details

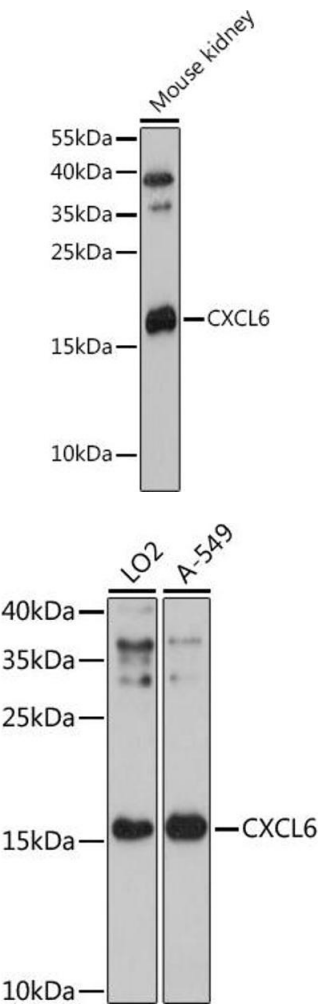
Target:	CXCL6
Alternative Name:	CXCL6 ( <a href="#">CXCL6 Products</a> )
Background:	Chemotactic for neutrophil granulocytes. Signals through binding and activation of its receptors (CXCR1 and CXCR2. In addition to its chemotactic and angiogenic properties, it has strong antibacterial activity against Gram-positive and Gram-negative bacteria (90-fold-higher when compared to CXCL5 and CXCL7.,CXCL6,CKA-3,GCP-2,GCP2,SCYB6,Immunology & Inflammation,Cytokines,Cell Intrinsic Innate Immunity Signaling Pathway,Chemokines,Chemokine,CXCL6
Molecular Weight:	11kDa
Gene ID:	6372
UniProt:	<a href="#">P80162</a>

## Application Details

Application Notes:	WB,1:500 - 1:2000
Restrictions:	For Research Use only

## Handling

Format:	Liquid
Buffer:	PBS with 0.02 % sodium azide,50 % glycerol, pH 7.3.
Preservative:	Sodium azide
Precaution of Use:	This product contains Sodium azide: a POISONOUS AND HAZARDOUS SUBSTANCE which should be handled by trained staff only.
Storage:	-20 °C
Storage Comment:	Store at -20°C. Avoid freeze / thaw cycles.



#### Western Blotting

**Image 1.** Western blot analysis of extracts of Mouse kidney, using CXCL6 antibody (ABIN7266316) at 1:3000 dilution. Secondary antibody: HRP Goat Anti-Rabbit IgG (H+L) (ABIN1684268 and ABIN3020597) at 1:10000 dilution. Lysates/proteins: 25 µg per lane. Blocking buffer: 3 % nonfat dry milk in TBST. Detection: ECL Basic Kit (RM00020). Exposure time: 90s.

#### Western Blotting

**Image 2.** Western blot analysis of extracts of various cell lines, using CXCL6 antibody (ABIN7266316) at 1:3000 dilution. Secondary antibody: HRP Goat Anti-Rabbit IgG (H+L) (ABIN1684268 and ABIN3020597) at 1:10000 dilution. Lysates/proteins: 25 µg per lane. Blocking buffer: 3 % nonfat dry milk in TBST. Detection: ECL Enhanced Kit (RM00021). Exposure time: 90s.