

Datasheet for ABIN7266321

**anti-CXCR5 antibody****3** Images[Go to Product page](#)

## Overview

Quantity:	100 µL
Target:	CXCR5
Reactivity:	Human
Host:	Rabbit
Clonality:	Monoclonal
Conjugate:	This CXCR5 antibody is un-conjugated
Application:	Western Blotting (WB), Immunofluorescence (IF)

## Product Details

Purpose:	CXCR5 Rabbit mAb
Immunogen:	A synthesized peptide derived from human CXCR5
Isotype:	IgG
Cross-Reactivity:	Human, Mouse, Rat
Characteristics:	Monoclonal Antibodies
Purification:	Affinity purification

## Target Details

Target:	CXCR5
Alternative Name:	CXCR5 ( <a href="#">CXCR5 Products</a> )
Background:	This gene encodes a multi-pass membrane protein that belongs to the CXC chemokine

## Target Details

receptor family. It is expressed in mature B-cells and Burkitt's lymphoma. This cytokine receptor binds to B-lymphocyte chemoattractant (BLC), and is involved in B-cell migration into B-cell follicles of spleen and Peyer patches. Alternatively spliced transcript variants encoding different isoforms have been described for this gene. [provided by RefSeq, Aug 2011],BLR1, CD185, MDR15,Blood,Cancer,Cardiovascular,CDs,Cell Intrinsic Innate Immunity Signaling Pathway,G protein signaling,G protein signaling\_G-Protein-Coupled Receptors(GPCR),Immunology & Inflammation,Innate Immunity\_Chemokines,Signal Transduction,CXCR5

Molecular Weight: 42kDa

Gene ID: 643

UniProt: [P32302](#)

## Application Details

Application Notes: WB,1:500 - 1:2000,IF,1:50 - 1:200

Restrictions: For Research Use only

## Handling

Format: Liquid

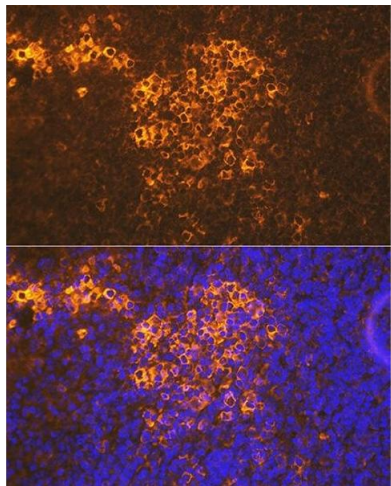
Buffer: PBS with 0.02 % sodium azide,0.05 % BSA,50 % glycerol, pH 7.3.

Preservative: Sodium azide

Precaution of Use: This product contains Sodium azide: a POISONOUS AND HAZARDOUS SUBSTANCE which should be handled by trained staff only.

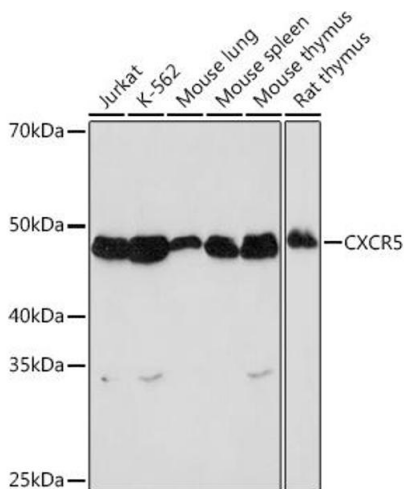
Storage: -20 °C

Storage Comment: Store at -20°C. Avoid freeze / thaw cycles.



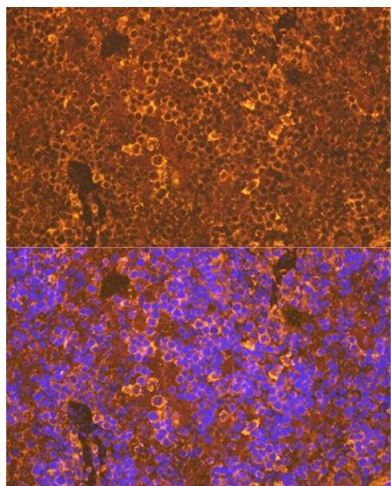
### Immunofluorescence

**Image 1.** Immunofluorescence analysis of mouse spleen using CXCR5 Rabbit mAb (ABIN7266321) at dilution of 1:100 (40x lens). Blue: DAPI for nuclear staining.



### Western Blotting

**Image 2.** Western blot analysis of extracts of various cell lines, using CXCR5 Rabbit mAb (ABIN7266321) at 1:1000 dilution. Secondary antibody: HRP Goat Anti-Rabbit IgG (H+L) (ABIN1684268 and ABIN3020597) at 1:10000 dilution. Lysates/proteins: 25 µg per lane. Blocking buffer: 3 % nonfat dry milk in TBST. Detection: ECL Basic Kit (RM00020). Exposure time: 90s.



### Immunofluorescence

**Image 3.** Immunofluorescence analysis of rat spleen using CXCR5 Rabbit mAb (ABIN7266321) at dilution of 1:100 (40x lens). Blue: DAPI for nuclear staining.