



[Go to Product page](#)

Datasheet for ABIN7266327

anti-CMKLR1 antibody (AA 250-350)

1 Image

Overview

Quantity:	100 µL
Target:	CMKLR1
Binding Specificity:	AA 250-350
Reactivity:	Human
Host:	Rabbit
Clonality:	Polyclonal
Conjugate:	This CMKLR1 antibody is un-conjugated
Application:	Western Blotting (WB), Immunofluorescence (IF)

Product Details

Purpose:	CMKLR1 Rabbit pAb
Immunogen:	A synthetic peptide corresponding to a sequence within amino acids 250-350 of human CMKLR1 (NP_001135815.1).
Sequence:	NRLAKTKKPF KIIVTIIITF FLCWCPYHTL NLLELHHTAM PGSVFSLGLP LATALAIANS CMNPILYVFM GQDFKKFKVA LFSRLVNALS EDTGHSSYPS H
Isotype:	IgG
Cross-Reactivity:	Human, Mouse, Rat
Characteristics:	Polyclonal Antibodies
Purification:	Affinity purification

Target Details

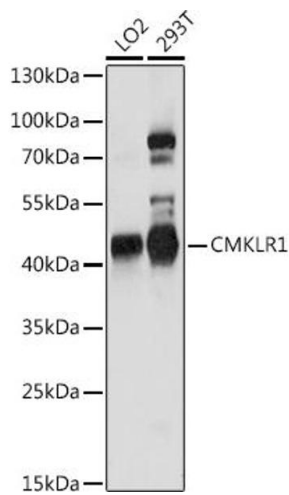
Target:	CMKLR1
Alternative Name:	CMKLR1 (CMKLR1 Products)
Background:	Receptor for the chemoattractant adipokine chemerin/RARRES2 and for the omega-3 fatty acid derived molecule resolvin E1. Interaction with RARRES2 initiates activation of G proteins G(i)/G(o) and beta-arrestin pathways inducing cellular responses via second messenger pathways such as intracellular calcium mobilization, phosphorylation of MAP kinases MAPK1/MAPK3 (ERK1/2, TYRO3, MAPK14/P38MAPK and PI3K leading to multifunctional effects, like, reduction of immune responses, enhancing of adipogenesis and angiogenesis PubMed:27716822. Resolvin E1 down-regulates cytokine production in macrophages by reducing the activation of MAPK1/3 (ERK1/2 and NF-kappa-B. Positively regulates adipogenesis and adipocyte metabolism.,CMKLR1,CHEMERINR,ChemR23,DEZ,RVER1,Signal Transduction,G protein signaling,G-Protein-Coupled Receptors(GPCR),Cell Biology & Developmental Biology,Cytoskeleton,Extracellular Matrix,Bone,CMKLR1
Molecular Weight:	42kDa
Gene ID:	1240
UniProt:	Q99788

Application Details

Application Notes:	WB,1:500 - 1:2000,IF,1:50 - 1:200
Restrictions:	For Research Use only

Handling

Format:	Liquid
Buffer:	PBS with 0.02 % sodium azide,50 % glycerol, pH 7.3.
Preservative:	Sodium azide
Precaution of Use:	This product contains Sodium azide: a POISONOUS AND HAZARDOUS SUBSTANCE which should be handled by trained staff only.
Storage:	-20 °C
Storage Comment:	Store at -20°C. Avoid freeze / thaw cycles.



Western Blotting

Image 1. Western blot analysis of extracts of various cell lines, using CMKLR1 antibody (ABIN7266327) at 1:1000 dilution. Secondary antibody: HRP Goat Anti-Rabbit IgG (H+L) (ABIN1684268 and ABIN3020597) at 1:10000 dilution. Lysates/proteins: 25 µg per lane. Blocking buffer: 3 % nonfat dry milk in TBST. Detection: ECL Basic Kit (RM00020). Exposure time: 90s.