

Datasheet for ABIN7266328

anti-CHI3L1 antibody

4 Images

[Go to Product page](#)

Overview

Quantity:	100 µL
Target:	CHI3L1
Reactivity:	Human
Host:	Rabbit
Clonality:	Monoclonal
Conjugate:	This CHI3L1 antibody is un-conjugated
Application:	Western Blotting (WB), Immunofluorescence (IF)

Product Details

Purpose:	YKL-40/CHI3L1 Rabbit mAb
Immunogen:	Recombinant protein of human YKL-40/CHI3L1.
Isotype:	IgG
Cross-Reactivity:	Human, Mouse
Characteristics:	Monoclonal Antibodies
Purification:	Affinity purification

Target Details

Target:	CHI3L1
Alternative Name:	CHI3L1 (CHI3L1 Products)
Target Type:	Viral Protein

Target Details

Background: Chitinases catalyze the hydrolysis of chitin, which is an abundant glycopolymer found in insect exoskeletons and fungal cell walls. The glycoside hydrolase 18 family of chitinases includes eight human family members. This gene encodes a glycoprotein member of the glycosyl hydrolase 18 family. The protein lacks chitinase activity and is secreted by activated macrophages, chondrocytes, neutrophils and synovial cells. The protein is thought to play a role in the process of inflammation and tissue remodeling.,CHI3L1,ASRT7,CGP-39,GP-39,GP39,HC-gp39,HCGP-3P,YKL-40,YKL40,YYL-40,hCGP-39,Signal Transduction,Cell Biology & Developmental Biology,Cytoskeleton,Extracellular Matrix,CHI3L1

Molecular Weight: 42kDa

Gene ID: 1116

UniProt: [P36222](#)

Application Details

Application Notes: WB,1:500 - 1:2000,IF,1:50 - 1:200

Restrictions: For Research Use only

Handling

Format: Liquid

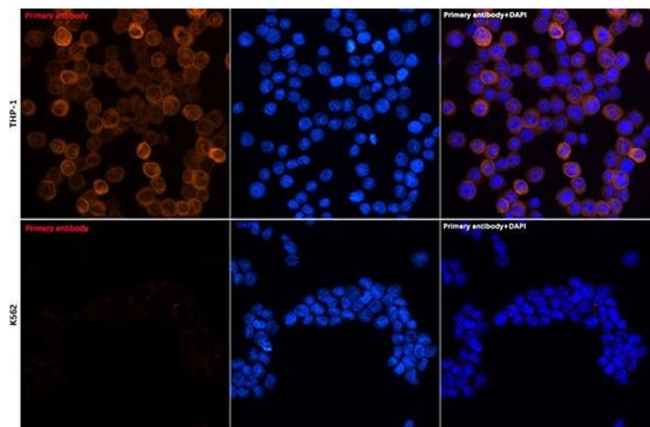
Buffer: PBS with 0.02 % sodium azide,50 % glycerol, pH 7.3.

Preservative: Sodium azide

Precaution of Use: This product contains Sodium azide: a POISONOUS AND HAZARDOUS SUBSTANCE which should be handled by trained staff only.

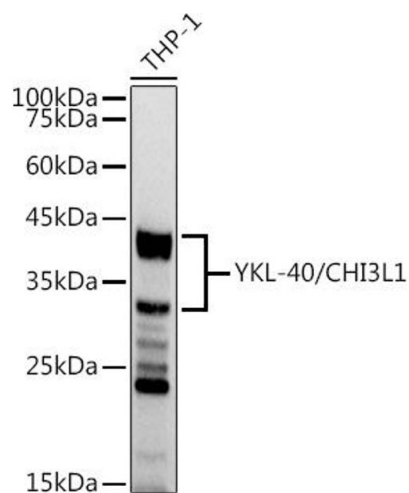
Storage: -20 °C

Storage Comment: Store at -20°C. Avoid freeze / thaw cycles.



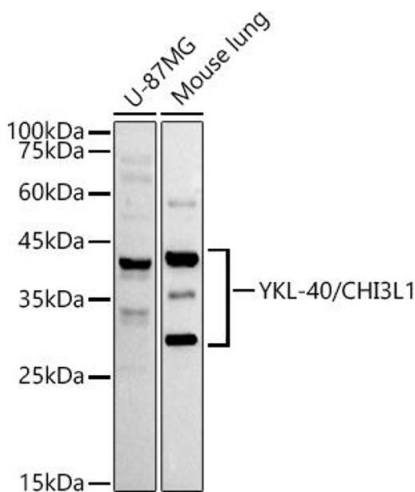
Immunofluorescence

Image 1. Immunofluorescence analysis of THP-1 and K562 cells using YKL-40/CHI3L1 Rabbit mAb (ABIN7266328) at dilution of 1:100 (40x lens). Blue: DAPI for nuclear staining.



Western Blotting

Image 2. Western blot analysis of extracts of THP-1 cells, using YKL-40/CHI3L1 antibody (ABIN7266328) at 1:1000 dilution. Secondary antibody: HRP Goat Anti-Rabbit IgG (H+L) (ABIN1684268 and ABIN3020597) at 1:10000 dilution. Lysates/proteins: 25 µg per lane. Blocking buffer: 3 % nonfat dry milk in TBST. Detection: ECL Basic Kit (RM00020). Exposure time: 1s.



Western Blotting

Image 3. Western blot analysis of extracts of various cell lines, using YKL-40/CHI3L1 antibody (ABIN7266328) at 1:1000 dilution. Secondary antibody: HRP Goat Anti-Rabbit IgG (H+L) (ABIN1684268 and ABIN3020597) at 1:10000 dilution. Lysates/proteins: 25 µg per lane. Blocking buffer: 3 % nonfat dry milk in TBST. Detection: ECL Basic Kit (RM00020). Exposure time: 90s.

Please check the [product details page](#) for more images. Overall 4 images are available for ABIN7266328.