

Datasheet for ABIN7266336
anti-CLIC3 antibody (AA 87-236)[Go to Product page](#)

1 Image

Overview

Quantity:	100 µL
Target:	CLIC3
Binding Specificity:	AA 87-236
Reactivity:	Human
Host:	Rabbit
Clonality:	Polyclonal
Conjugate:	This CLIC3 antibody is un-conjugated
Application:	Western Blotting (WB)

Product Details

Purpose:	CLIC3 Rabbit pAb
Immunogen:	Recombinant fusion protein containing a sequence corresponding to amino acids 87-236 of human CLIC3 (NP_004660.2).
Sequence:	GPPDFPSLAP RYRESNTAGN DVFHKFSAFI KNPVPAQDEA LYQQLLRALA RLDSYLRAPL EHELAGEPQL RESRRRFLDG DRLTLADCSL LPKLHIVDTV CAHFRQAPIP AELRGVRRYL DSAMQEKEFK YTCPHSAEIL AAYRPAVHPR
Isotype:	IgG
Cross-Reactivity:	Human, Mouse, Rat
Characteristics:	Polyclonal Antibodies
Purification:	Affinity purification

Target Details

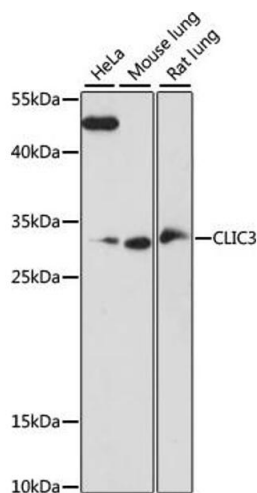
Target:	CLIC3
Alternative Name:	CLIC3 (CLIC3 Products)
Background:	Chloride channels are a diverse group of proteins that regulate fundamental cellular processes including stabilization of cell membrane potential, transepithelial transport, maintenance of intracellular pH , and regulation of cell volume. Chloride intracellular channel 3 is a member of the p64 family and is predominantly localized in the nucleus and stimulates chloride ion channel activity. In addition, this protein may participate in cellular growth control, based on its association with ERK7, a member of the MAP kinase family.,CLIC3,Cancer,Signal Transduction,Endocrine & Metabolism,CLIC3
Molecular Weight:	26kDa
Gene ID:	9022
UniProt:	O95833

Application Details

Application Notes:	WB,1:200 - 1:2000
Restrictions:	For Research Use only

Handling

Format:	Liquid
Buffer:	PBS with 0.02 % sodium azide,50 % glycerol, pH 7.3.
Preservative:	Sodium azide
Precaution of Use:	This product contains Sodium azide: a POISONOUS AND HAZARDOUS SUBSTANCE which should be handled by trained staff only.
Storage:	-20 °C
Storage Comment:	Store at -20°C. Avoid freeze / thaw cycles.



Western Blotting

Image 1. Western blot analysis of extracts of various cell lines, using CLIC3 antibody (ABIN7266336) at 1:1000 dilution. Secondary antibody: HRP Goat Anti-Rabbit IgG (H+L) (ABIN1684268 and ABIN3020597) at 1:10000 dilution. Lysates/proteins: 25 µg per lane. Blocking buffer: 3 % nonfat dry milk in TBST. Detection: ECL Basic Kit (RM00020). Exposure time: 90s.