



[Go to Product page](#)

Datasheet for ABIN7266338
anti-CHMP7 antibody (AA 204-453)

1 Image

Overview

Quantity:	100 µL
Target:	CHMP7
Binding Specificity:	AA 204-453
Reactivity:	Human
Host:	Rabbit
Clonality:	Polyclonal
Conjugate:	This CHMP7 antibody is un-conjugated
Application:	Western Blotting (WB)

Product Details

Purpose:	CHMP7 Rabbit pAb
Immunogen:	Recombinant fusion protein containing a sequence corresponding to amino acids 204-453 of human CHMP7 (NP_689485.1).
Sequence:	LQKEKRVTVL EQNGEKIVKF ARGPRAKVSP VNDVDVGVYQ LMQSEQLLSR KVESLSQEAE RCKEEARRAC RAGKKQLALR SLKAKQRTEK RIEALHAKLD TVQGILDRIY ASQTDQMVFN AYQAGVGALK LSMKDVTVEK AESLVDQIQE LCDTQDEVSQ TLAGGVTNGL DFDSEELEKE LDILLQDTTK EPLDLPDNP NRHFTNSVPN PRISDAELEA ELEKLSLSEG GLVPSSKSPK RQLEPTLKPL
Isotype:	IgG
Cross-Reactivity:	Human, Mouse, Rat
Characteristics:	Polyclonal Antibodies

Product Details

Purification: Affinity purification

Target Details

Target: CHMP7

Alternative Name: CHMP7 ([CHMP7 Products](#))

Background: ESCRT-III-like protein required to recruit the ESCRT-III complex to the nuclear envelope during late anaphase. Together with SPAST, the ESCRT-III complex promotes nuclear envelope sealing and mitotic spindle disassembly during late anaphase. Plays a role in the endosomal sorting pathway.,CHMP7,Signal Transduction,Cell Biology & Developmental Biology,Autophagy,Regulators,CHMP7

Molecular Weight: 18kDa/50kDa

Gene ID: 91782

UniProt: [Q8WUX9](#)

Application Details

Application Notes: WB,1:500 - 1:2000

Restrictions: For Research Use only

Handling

Format: Liquid

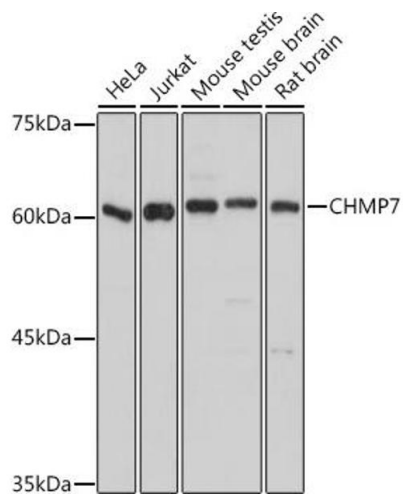
Buffer: PBS with 0.02 % sodium azide,50 % glycerol, pH 7.3.

Preservative: Sodium azide

Precaution of Use: This product contains Sodium azide: a POISONOUS AND HAZARDOUS SUBSTANCE which should be handled by trained staff only.

Storage: -20 °C

Storage Comment: Store at -20°C. Avoid freeze / thaw cycles.



Western Blotting

Image 1. Western blot analysis of extracts of various cell lines, using CHMP7 antibody (ABIN7266338) at 1:1000 dilution. Secondary antibody: HRP Goat Anti-Rabbit IgG (H+L) (ABIN1684268 and ABIN3020597) at 1:10000 dilution. Lysates/proteins: 25 µg per lane. Blocking buffer: 3% nonfat dry milk in TBST. Detection: ECL Basic Kit (RM00020). Exposure time: 10s.