



[Go to Product page](#)

Datasheet for ABIN7266344

anti-Choline Acetyltransferase antibody (AA 331-630)

2 Images

Overview

Quantity:	100 µL
Target:	Choline Acetyltransferase (CHAT)
Binding Specificity:	AA 331-630
Reactivity:	Human
Host:	Rabbit
Clonality:	Polyclonal
Conjugate:	This Choline Acetyltransferase antibody is un-conjugated
Application:	Western Blotting (WB), Immunofluorescence (IF)

Product Details

Purpose:	CHAT Rabbit pAb
Immunogen:	Recombinant fusion protein containing a sequence corresponding to amino acids 331-630 of human CHAT (NP_001136401.1).
Sequence:	VLVQCTEHELL KHMTQSSRKL IRADSVSELP APRRLRWKCS PEIQGHLASS AEKLQRIVKN LDFIVYKFDN YGKTFIKKQK CSPDAFIQVA LQLAFYRLHR RLVPTYESAS IRRFQEGRVD NIRSATPEAL AFVRAVTDHK AAVPASEKLL LLKDAIRAQT AYTVMAITGM AIDNHLLALR ELARAMCKEL PEMFMDETYL MSNRFVLSTS QVPTTTEMFC CYGPVVPNGY GACYNPQPET ILFCISSFHS CKETSSSKFA KAVEESLIDM RDLCSLLPPT ESKPLATKEK ATRPSQGHQP
Isotype:	IgG
Cross-Reactivity:	Human, Mouse, Rat
Characteristics:	Polyclonal Antibodies

Product Details

Purification: Affinity purification

Target Details

Target: Choline Acetyltransferase (CHAT)

Alternative Name: CHAT ([CHAT Products](#))

Background: This gene encodes an enzyme which catalyzes the biosynthesis of the neurotransmitter acetylcholine. This gene product is a characteristic feature of cholinergic neurons, and changes in these neurons may explain some of the symptoms of Alzheimer's disease. Polymorphisms in this gene have been associated with Alzheimer's disease and mild cognitive impairment. Mutations in this gene are associated with congenital myasthenic syndrome associated with episodic apnea. Multiple transcript variants encoding different isoforms have been found for this gene, and some of these variants have been shown to encode more than one isoform.,CHAT;CHOACTASE;CMS1A;CMS1A2;CMS6,Neuroscience,Cell Type Marker,Neuron marker,CHAT

Molecular Weight: 70kDa/74kDa/82kDa

Gene ID: 1103

UniProt: [P28329](#)

Pathways: [Skeletal Muscle Fiber Development](#)

Application Details

Application Notes: WB,1:500 - 1:2000,IF,1:50 - 1:200

Restrictions: For Research Use only

Handling

Format: Liquid

Buffer: PBS with 0.02 % sodium azide,50 % glycerol, pH 7.3.

Preservative: Sodium azide

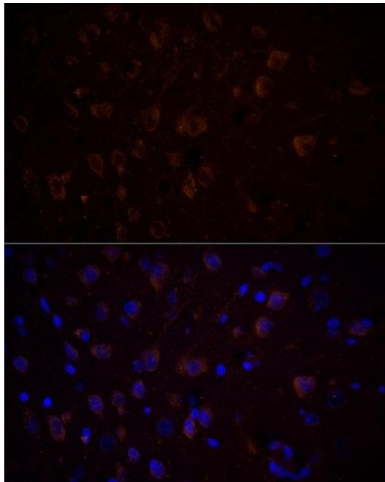
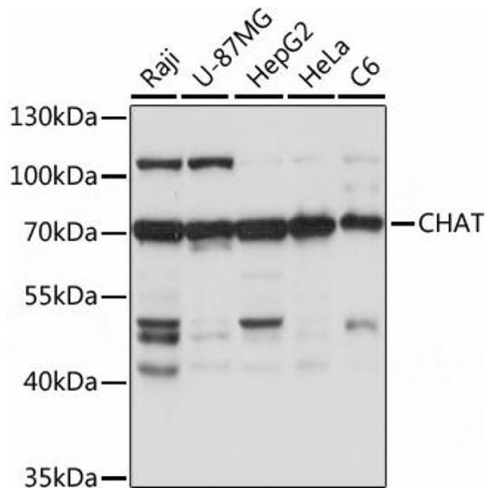
Precaution of Use: This product contains Sodium azide: a POISONOUS AND HAZARDOUS SUBSTANCE which should be handled by trained staff only.

Storage: -20 °C

Handling

Storage Comment: Store at -20°C. Avoid freeze / thaw cycles.

Images



Western Blotting

Image 1. Western blot analysis of extracts of various cell line, using CHAT antibody (ABIN7266344) at 1:1000 dilution. Secondary antibody: HRP Goat Anti-Rabbit IgG (H+L) (ABIN1684268 and ABIN3020597) at 1:10000 dilution. Lysates/proteins: 25 µg per lane. Blocking buffer: 3 % nonfat dry milk in TBST. Detection: ECL Basic Kit (RM00020). Exposure time: 5s.

Immunofluorescence

Image 2. Immunofluorescence analysis of Rat brain using CHAT antibody (ABIN7266344) at dilution of 1:100 (40x lens). Blue: DAPI for nuclear staining.