



[Go to Product page](#)

Datasheet for ABIN7266350  
**anti-Chordin antibody (AA 686-955)**

1 Image

Overview

Quantity:	100 µL
Target:	Chordin (CHRD)
Binding Specificity:	AA 686-955
Reactivity:	Human
Host:	Rabbit
Clonality:	Polyclonal
Conjugate:	This Chordin antibody is un-conjugated
Application:	Western Blotting (WB)

Product Details

Purpose:	CHRD Rabbit pAb
Immunogen:	Recombinant fusion protein containing a sequence corresponding to amino acids 686-955 of human CHRD (NP_003732.2).
Sequence:	PALAPAKPGG PGRPRDPNTC FFEGQQRPHG ARWAPNYDPL CSLCTCQRRT VICDPVVCPP PSCPHPVQAP DQCCPVCPEK QDVRDLPGLP RSRDPGEGCY FDGDRSWRAA GTRWHPVVP FGLIKCAVCT CKGGTGEVHC EKVQCRLAC AQPVRVNPTD CCKQCPVGS G AHPQLGDPMQ ADGPRGCRFA GQWFPESQSW HPSVPPFGEM SCITCRGAG VPHCERDDCS LPLSCGSGKE SRCCSRCTAH RRPAPETRTD PELEKEAEGS
Isotype:	IgG
Cross-Reactivity:	Mouse, Rat
Characteristics:	Polyclonal Antibodies

## Product Details

---

Purification: Affinity purification

## Target Details

---

Target: Chordin (CHRD)

Alternative Name: CHRD ([CHRD Products](#))

Background: This gene encodes a secreted protein that dorsalizes early vertebrate embryonic tissues by binding to ventralizing TGF-beta-like bone morphogenetic proteins and sequestering them in latent complexes. The encoded protein may also have roles in organogenesis and during adulthood. It has been suggested that this gene could be a candidate gene for Cornelia de Lange syndrome. Reduced expression of this gene results in enhanced bone regeneration. Alternative splicing results in multiple transcript variants. Other alternative splice variants have been described but their full length sequence has not been determined. [provided by RefSeq, Jan 2015],CHRD,Cell Biology & Developmental Biology,Neuroscience,Stem Cells,CHRD

Gene ID: 8646

UniProt: [Q9H2X0](#)

## Application Details

---

Application Notes: WB,1:500 - 1:2000

Restrictions: For Research Use only

## Handling

---

Format: Liquid

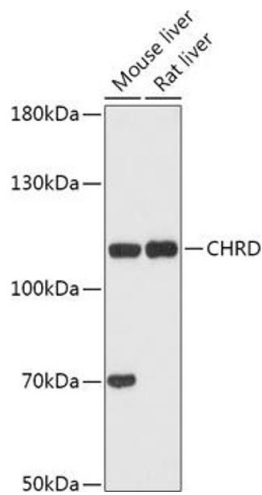
Buffer: PBS with 0.02 % sodium azide,50 % glycerol, pH 7.3.

Preservative: Sodium azide

Precaution of Use: This product contains Sodium azide: a POISONOUS AND HAZARDOUS SUBSTANCE which should be handled by trained staff only.

Storage: -20 °C

Storage Comment: Store at -20°C. Avoid freeze / thaw cycles.



### Western Blotting

**Image 1.** Western blot analysis of extracts of various cell lines, using CHRD antibody (ABIN7266350) at 1:1000 dilution. Secondary antibody: HRP Goat Anti-Rabbit IgG (H+L) (ABIN1684268 and ABIN3020597) at 1:10000 dilution. Lysates/proteins: 25 µg per lane. Blocking buffer: 3 % nonfat dry milk in TBST. Detection: ECL Basic Kit (RM00020). Exposure time: 90s.