



[Go to Product page](#)

Datasheet for ABIN7266351  
**anti-CHRDL1 antibody (AA 289-458)**

1 Image

Overview

Quantity:	100 µL
Target:	CHRDL1
Binding Specificity:	AA 289-458
Reactivity:	Human
Host:	Rabbit
Clonality:	Polyclonal
Conjugate:	This CHRDL1 antibody is un-conjugated
Application:	Western Blotting (WB)

Product Details

Purpose:	CHRDL1 Rabbit pAb
Immunogen:	Recombinant fusion protein containing a sequence corresponding to amino acids 289-458 of human CHRDL1 (NP_001137453.1).
Sequence:	CTCNVTKQEC KKIHCNRYR CKYPQKIDGK CCKVCPGKKA KEELPGQSFD NKGYFCGEET MPVYESVFME DGETTRKIAL ETERPPQVEV HVWTIRKGIL QHFHIEKISK RMFEELPHFK LVTRTTLSQW KIFTEGEAQI SQMCSSRVCR TELEDLVKVL YLERSEKGHC
Isotype:	IgG
Cross-Reactivity:	Human, Mouse
Characteristics:	Polyclonal Antibodies
Purification:	Affinity purification

## Target Details

---

Target:	CHRDL1
Alternative Name:	CHRDL1 ( <a href="#">CHRDL1 Products</a> )
Background:	This gene encodes an antagonist of bone morphogenetic protein 4. The encoded protein may play a role in topographic retinotectal projection and in the regulation of retinal angiogenesis in response to hypoxia. Alternatively spliced transcript variants encoding different isoforms have been described.,CHRDL1,CHL,MGC1,MGCN,NRLN1,VOPT,dA141H5.1,Neuroscience,Stem Cells,Neural Stem Cells,CHRDL1
Molecular Weight:	43kDa/51kDa/52kDa
Gene ID:	91851
UniProt:	<a href="#">Q9BU40</a>

## Application Details

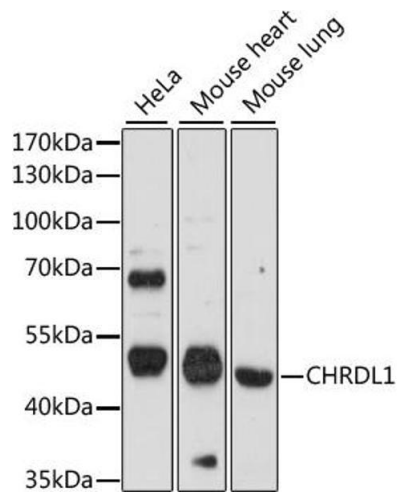
---

Application Notes:	WB,1:500 - 1:2000
Restrictions:	For Research Use only

## Handling

---

Format:	Liquid
Buffer:	PBS with 0.02 % sodium azide,50 % glycerol, pH 7.3.
Preservative:	Sodium azide
Precaution of Use:	This product contains Sodium azide: a POISONOUS AND HAZARDOUS SUBSTANCE which should be handled by trained staff only.
Storage:	-20 °C
Storage Comment:	Store at -20°C. Avoid freeze / thaw cycles.



### Western Blotting

**Image 1.** Western blot analysis of extracts of various cell lines, using CHRDL1 antibody (ABIN7266351) at 1:1000 dilution. Secondary antibody: HRP Goat Anti-Rabbit IgG (H+L) (ABIN1684268 and ABIN3020597) at 1:10000 dilution. Lysates/proteins: 25 µg per lane. Blocking buffer: 3 % nonfat dry milk in TBST. Detection: ECL Basic Kit (RM00020). Exposure time: 90s.