

Datasheet for ABIN7266353

anti-CSH1 antibody**2** Images[Go to Product page](#)

Overview

Quantity:	100 µL
Target:	CSH1
Reactivity:	Human
Host:	Rabbit
Clonality:	Monoclonal
Conjugate:	This CSH1 antibody is un-conjugated
Application:	Immunohistochemistry (IHC), Immunofluorescence (IF)

Product Details

Purpose:	Placental lactogen (CSH1) Rabbit mAb
Immunogen:	Recombinant protein of human Placental lactogen (CSH1) (CSH1).
Isotype:	IgG
Cross-Reactivity:	Human
Characteristics:	Monoclonal Antibodies
Purification:	Affinity purification

Target Details

Target:	CSH1
Alternative Name:	Placental lactogen (CSH1 Products)
Background:	The protein encoded by this gene is a member of the somatotropin/prolactin family of

Target Details

hormones and plays an important role in growth control. The gene is located at the growth hormone locus on chromosome 17 along with four other related genes in the same transcriptional orientation, an arrangement which is thought to have evolved by a series of gene duplications. Although the five genes share a remarkably high degree of sequence identity, they are expressed selectively in different tissues. Alternative splicing generates additional isoforms of each of the five growth hormones, leading to further diversity and potential for specialization. This particular family member is expressed mainly in the placenta and utilizes multiple transcription initiation sites. Expression of the identical mature proteins for chorionic somatomammotropin hormones 1 and 2 is upregulated during development, although the ratio of 1 to 2 increases by term. Mutations in this gene result in placental lactogen deficiency and Silver-Russell syndrome.,CSH1, CS-1, CSA, CSMT, GHB3, PL, hCS-1, hCS-A, chorionic somatomammotropin hormone 1,Immunology & Inflammation,Cytokines,Placental lactogen

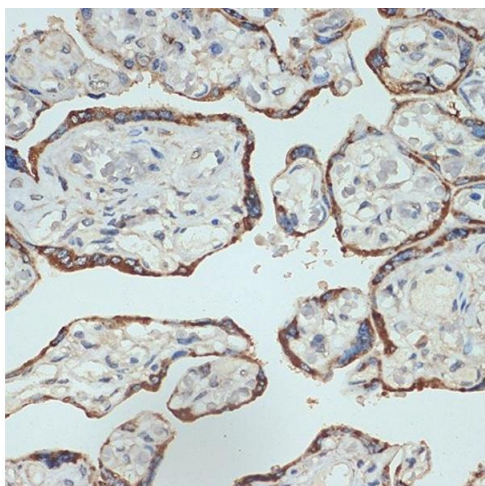
Molecular Weight:	25kDa
Gene ID:	1442
UniProt:	P01243
Pathways:	Response to Growth Hormone Stimulus

Application Details

Application Notes:	IHC,1:50 - 1:200,IF,1:50 - 1:200
Restrictions:	For Research Use only

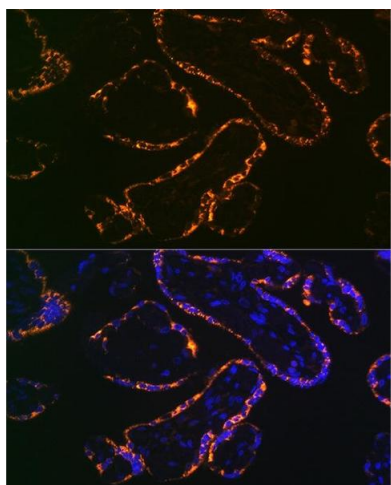
Handling

Format:	Liquid
Buffer:	PBS with 0.02 % sodium azide,0.05 % BSA,50 % glycerol, pH 7.3.
Preservative:	Sodium azide
Precaution of Use:	This product contains Sodium azide: a POISONOUS AND HAZARDOUS SUBSTANCE which should be handled by trained staff only.
Storage:	-20 °C
Storage Comment:	Store at -20°C. Avoid freeze / thaw cycles.



Immunohistochemistry

Image 1. Immunohistochemistry of paraffin-embedded human placenta using Placental lactogen (CSH1) (CSH1) Rabbit mAb (ABIN7266353) at dilution of 1:100 (40x lens). Perform microwave antigen retrieval with 10 mM Tris/EDTA buffer pH 9.0 before commencing with IHC staining protocol.



Immunofluorescence

Image 2. Immunofluorescence analysis of human placenta using Placental lactogen (CSH1) (CSH1) Rabbit mAb (ABIN7266353) at dilution of 1:100 (40x lens). Blue: DAPI for nuclear staining.