

Datasheet for ABIN7266354

anti-CHM antibody[Go to Product page](#)**1** Image

Overview

Quantity:	100 µL
Target:	CHM
Reactivity:	Human
Host:	Rabbit
Clonality:	Monoclonal
Conjugate:	This CHM antibody is un-conjugated
Application:	Western Blotting (WB)

Product Details

Purpose:	CHM Rabbit mAb
Immunogen:	A synthesized peptide derived from human CHM.
Isotype:	IgG
Cross-Reactivity:	Human
Characteristics:	Monoclonal Antibodies
Purification:	Affinity purification

Target Details

Target:	CHM
Alternative Name:	CHM (CHM Products)
Background:	This gene encodes component A of the RAB geranylgeranyl transferase holoenzyme. In the

Target Details

dimeric holoenzyme, this subunit binds unprenylated Rab GTPases and then presents them to the catalytic Rab GGTase subunit for the geranylgeranyl transfer reaction. Rab GTPases need to be geranylgeranylated on either one or two cysteine residues in their C-terminus to localize to the correct intracellular membrane. Mutations in this gene are a cause of choroideremia, also known as tapetochoroidal dystrophy (TCD). This X-linked disease is characterized by progressive dystrophy of the choroid, retinal pigment epithelium and retina. Alternatively spliced transcript variants have been found for this gene.,CHM, DXS540, GGTA, HSD-32, REP-1, TCD, CHM, Rab escort protein 1,Signal Transduction,Neuroscience,CHM

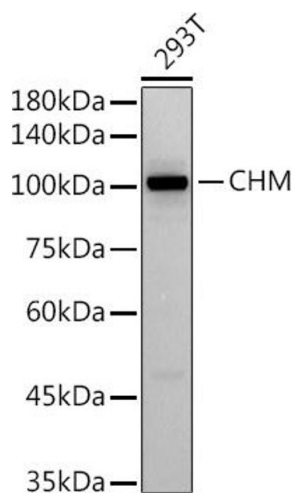
Molecular Weight:	95kDa
Gene ID:	1121
UniProt:	P24386
Pathways:	Sensory Perception of Sound

Application Details

Application Notes:	WB,1:500 - 1:2000
Restrictions:	For Research Use only

Handling

Format:	Liquid
Buffer:	PBS with 0.02 % sodium azide,50 % glycerol, pH 7.3.
Preservative:	Sodium azide
Precaution of Use:	This product contains Sodium azide: a POISONOUS AND HAZARDOUS SUBSTANCE which should be handled by trained staff only.
Storage:	-20 °C
Storage Comment:	Store at -20°C. Avoid freeze / thaw cycles.



Western Blotting

Image 1. Western blot analysis of extracts of 293T cells, using (ABIN7266354) at 1:500 dilution. Secondary antibody: HRP Goat Anti-Rabbit IgG (H+L) (ABIN1684268 and ABIN3020597) at 1:10000 dilution. Lysates/proteins: 25 µg per lane. Blocking buffer: 3 % nonfat dry milk in TBST. Detection: ECL Basic Kit (RM00020). Exposure time: 60s.