

Datasheet for ABIN7266363

anti-CHD3 antibody

7 Images

[Go to Product page](#)

Overview

Quantity:	100 µL
Target:	CHD3
Reactivity:	Human
Host:	Rabbit
Clonality:	Monoclonal
Conjugate:	This CHD3 antibody is un-conjugated
Application:	Western Blotting (WB), Immunohistochemistry (IHC), Immunofluorescence (IF)

Product Details

Purpose:	CHD3 Rabbit mAb
Immunogen:	A synthesized peptide derived from human CHD3
Isotype:	IgG
Cross-Reactivity:	Human, Mouse, Rat
Characteristics:	Monoclonal Antibodies
Purification:	Affinity purification

Target Details

Target:	CHD3
Alternative Name:	CHD3 (CHD3 Products)
Background:	This gene encodes a member of the CHD family of proteins which are characterized by the

Target Details

presence of chromo (chromatin organization modifier) domains and SNF2-related helicase/ATPase domains. This protein is one of the components of a histone deacetylase complex referred to as the Mi-2/NuRD complex which participates in the remodeling of chromatin by deacetylating histones. Chromatin remodeling is essential for many processes including transcription. Autoantibodies against this protein are found in a subset of patients with dermatomyositis. Three alternatively spliced transcripts encoding different isoforms have been described. [provided by RefSeq, Jul 2008],Mi-2a, Mi2-ALPHA, ZFH,Chromatin Remodeling,Epigenetics & Nuclear Signaling,Immunology & Inflammation,RNA Binding,CHD3

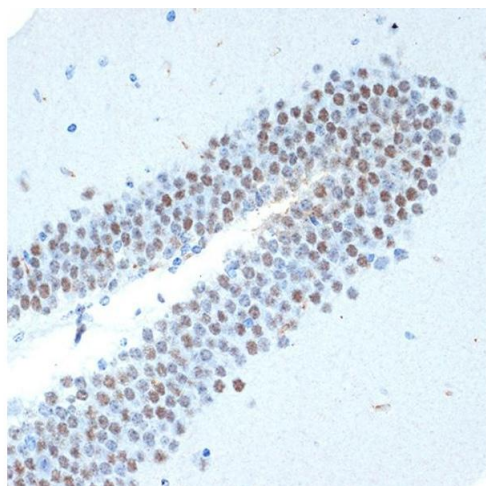
Molecular Weight:	260kDa
Gene ID:	1107
UniProt:	Q12873

Application Details

Application Notes:	WB,1:500 - 1:2000,IHC,1:50 - 1:200,IF,1:50 - 1:200
Restrictions:	For Research Use only

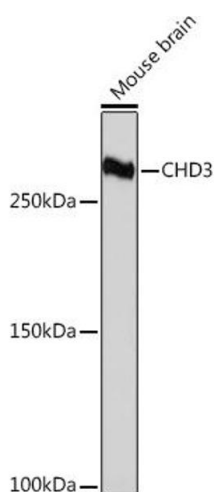
Handling

Format:	Liquid
Buffer:	PBS with 0.02 % sodium azide,0.05 % BSA,50 % glycerol, pH 7.3.
Preservative:	Sodium azide
Precaution of Use:	This product contains Sodium azide: a POISONOUS AND HAZARDOUS SUBSTANCE which should be handled by trained staff only.
Storage:	-20 °C
Storage Comment:	Store at -20°C. Avoid freeze / thaw cycles.



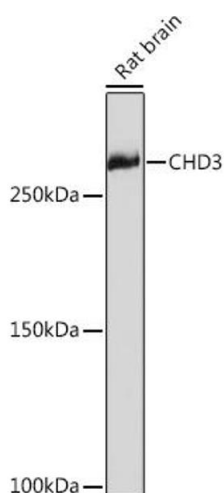
Immunohistochemistry

Image 1. Immunohistochemistry of paraffin-embedded mouse brain using CHD3 Rabbit mAb (ABIN7266363) at dilution of 1:100 (40x lens). Perform microwave antigen retrieval with 10 mM Tris/EDTA buffer pH 9.0 before commencing with IHC staining protocol.



Western Blotting

Image 2. Western blot analysis of extracts of Mouse brain, using CHD3 Rabbit mAb (ABIN7266363) at 1:1000 dilution. Secondary antibody: HRP Goat Anti-Rabbit IgG (H+L) (ABIN1684268 and ABIN3020597) at 1:10000 dilution. Lysates/proteins: 25 µg per lane. Blocking buffer: 3 % nonfat dry milk in TBST. Detection: ECL Basic Kit (RM00020). Exposure time: 3 min.



Western Blotting

Image 3. Western blot analysis of extracts of Rat brain, using CHD3 Rabbit mAb (ABIN7266363) at 1:1000 dilution. Secondary antibody: HRP Goat Anti-Rabbit IgG (H+L) (ABIN1684268 and ABIN3020597) at 1:10000 dilution. Lysates/proteins: 25 µg per lane. Blocking buffer: 3 % nonfat dry milk in TBST. Detection: ECL Enhanced Kit (RM00021). Exposure time: 3 min.

Please check the [product details page](#) for more images. Overall 7 images are available for ABIN7266363.