

Datasheet for ABIN7266366
anti-Chromogranin A antibody

6 Images

[Go to Product page](#)

Overview

Quantity:	100 µL
Target:	Chromogranin A (CHGA)
Reactivity:	Human
Host:	Rabbit
Clonality:	Monoclonal
Conjugate:	This Chromogranin A antibody is un-conjugated
Application:	Immunofluorescence (IF), Immunohistochemistry (IHC), Western Blotting (WB)

Product Details

Purpose:	Chromogranin A Rabbit mAb
Immunogen:	A synthesized peptide derived from human Chromogranin A
Isotype:	IgG
Cross-Reactivity:	Human, Mouse, Rat
Characteristics:	Monoclonal Antibodies
Purification:	Affinity purification

Target Details

Target:	Chromogranin A (CHGA)
Alternative Name:	CHGA (CHGA Products)
Background:	The protein encoded by this gene is a member of the chromogranin/secretogranin family of

Target Details

neuroendocrine secretory proteins. It is found in secretory vesicles of neurons and endocrine cells. This gene product is a precursor to three biologically active peptides, vasostatin, pancreastatin, and parastatin. These peptides act as autocrine or paracrine negative modulators of the neuroendocrine system. Two other peptides, catestatin and chromofungin, have antimicrobial activity and antifungal activity, respectively. Two transcript variants encoding different isoforms have been found for this gene. [provided by RefSeq, Sep 2014],CGA,Cancer,Cell Biology & Developmental Biology,Cell Type Marker,Cell Type Marker_Neuron marker,Growth factors,Growth factors_Insulin and insulin-like,Neuroscience,Signal Transduction,Tumor biomarkers,CHGA

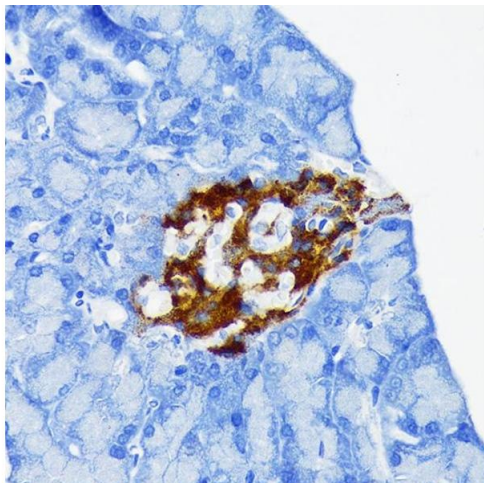
Molecular Weight:	90kDa
Gene ID:	1113
UniProt:	P10645
Pathways:	Negative Regulation of Hormone Secretion , cAMP Metabolic Process , Regulation of G-Protein Coupled Receptor Protein Signaling

Application Details

Application Notes:	WB,1:500 - 1:2000,IHC,1:50 - 1:200,IF,1:50 - 1:200
Restrictions:	For Research Use only

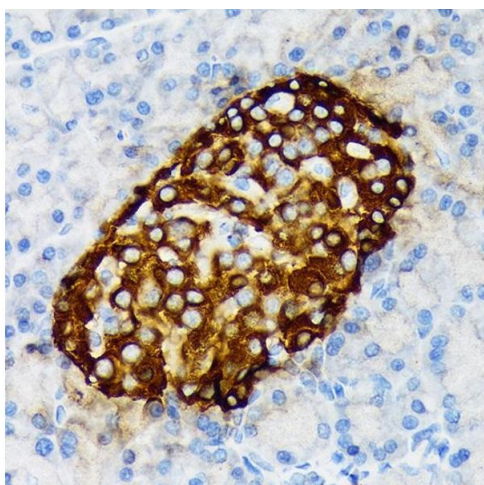
Handling

Format:	Liquid
Buffer:	PBS with 0.02 % sodium azide,0.05 % BSA,50 % glycerol, pH 7.3.
Preservative:	Sodium azide
Precaution of Use:	This product contains Sodium azide: a POISONOUS AND HAZARDOUS SUBSTANCE which should be handled by trained staff only.
Storage:	-20 °C
Storage Comment:	Store at -20°C. Avoid freeze / thaw cycles.



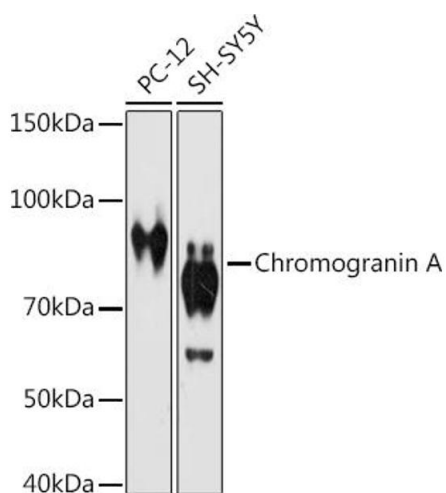
Immunohistochemistry

Image 1. Immunohistochemistry of paraffin-embedded mouse pancreatic islet using Chromogranin A Rabbit mAb (ABIN7266366) at dilution of 1:100 (40x lens). Perform microwave antigen retrieval with 10 mM Tris/EDTA buffer pH 9.0 before commencing with IHC staining protocol.



Immunohistochemistry

Image 2. Immunohistochemistry of paraffin-embedded rat pancreatic islet using Chromogranin A Rabbit mAb (ABIN7266366) at dilution of 1:100 (40x lens). Perform microwave antigen retrieval with 10 mM Tris/EDTA buffer pH 9.0 before commencing with IHC staining protocol.



Western Blotting

Image 3. Western blot analysis of extracts of various cell lines, using Chromogranin A antibody (ABIN7266366) at 1:1000 dilution. Secondary antibody: HRP Goat Anti-Rabbit IgG (H+L) (ABIN1684268 and ABIN3020597) at 1:10000 dilution. Lysates/proteins: 25 µg per lane. Blocking buffer: 3 % nonfat dry milk in TBST. Detection: ECL Enhanced Kit (RM00021). Exposure time: 180s.

Please check the [product details page](#) for more images. Overall 6 images are available for ABIN7266366.