

Datasheet for ABIN7266376

**anti-RGC32 antibody**[Go to Product page](#)**1** Image

## Overview

Quantity:	100 µL
Target:	RGC32 (C13orf15)
Reactivity:	Human
Host:	Rabbit
Clonality:	Polyclonal
Conjugate:	This RGC32 antibody is un-conjugated
Application:	Western Blotting (WB)

## Product Details

Purpose:	RGCC Rabbit pAb
Immunogen:	A synthetic peptide of Human RGCC.
Isotype:	IgG
Cross-Reactivity:	Human, Mouse, Rat
Characteristics:	Polyclonal Antibodies
Purification:	Affinity purification

## Target Details

Target:	RGC32 (C13orf15)
Alternative Name:	RGCC ( <a href="#">C13orf15 Products</a> )
Background:	This gene is thought to regulate cell cycle progression. It is induced by p53 in response to DNA

## Target Details

damage, or by sublytic levels of complement system proteins that result in activation of the cell cycle. The encoded protein localizes to the cytoplasm during interphase and to centrosomes during mitosis. The protein forms a complex with polo-like kinase 1. The protein also translocates to the nucleus in response to treatment with complement system proteins, and can associate with and increase the kinase activity of cell division cycle 2 protein. In different assays and cell types, overexpression of this protein has been shown to activate or suppress cell cycle progression. [provided by RefSeq, Jul 2008],C13orf15,RGC-32,RGC32,bA157L14.2,RGCC,Cancer,Tumor suppressors,p53 pathway,Kinase,Cell Biology & Developmental Biology,Cell Cycle,Cell cycle inhibitors,RGCC

Gene ID: 28984

UniProt: [Q9H4X1](#)

## Application Details

Application Notes: WB,1:500 - 1:2000

Restrictions: For Research Use only

## Handling

Format: Liquid

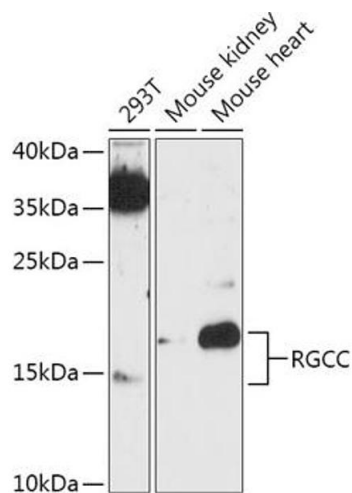
Buffer: PBS with 0.02 % sodium azide,50 % glycerol, pH 7.3.

Preservative: Sodium azide

Precaution of Use: This product contains Sodium azide: a POISONOUS AND HAZARDOUS SUBSTANCE which should be handled by trained staff only.

Storage: -20 °C

Storage Comment: Store at -20°C. Avoid freeze / thaw cycles.



Western Blotting

**Image 1.** Western blot analysis of extracts of various cell lines, using RGCC antibody (ABIN7266376) at 1:1000 dilution. Secondary antibody: HRP Goat Anti-Rabbit IgG (H+L) (ABIN1684268 and ABIN3020597) at 1:10000 dilution. Lysates/proteins: 25 µg per lane. Blocking buffer: 3 % nonfat dry milk in TBST. Detection: ECL Enhanced Kit (RM00021). Exposure time: 90s.