

Datasheet for ABIN7266407
anti-Claudin 17 antibody (C-Term)

2 Images

[Go to Product page](#)

Overview

Quantity:	100 µL
Target:	Claudin 17 (CLDN17)
Binding Specificity:	C-Term
Reactivity:	Human
Host:	Rabbit
Clonality:	Polyclonal
Conjugate:	This Claudin 17 antibody is un-conjugated
Application:	Western Blotting (WB), Immunohistochemistry (IHC), Immunofluorescence (IF)

Product Details

Purpose:	CLDN17 Rabbit pAb
Immunogen:	A synthetic peptide corresponding to a sequence within amino acids 100 to the C-terminus of human CLDN17 (NP_036263.1).
Sequence:	CGMKQVQCTG SNERAKAYLL GTSGVLFILT GIFVLIPVSW TANIIRDFY NPAIHIGQKR ELGAALFLGW ASAAVLFIGG GLLCGFCCCN RKKQGYRYPV PGYRVPHTDK RRNTTMLSMT STSYV
Isotype:	IgG
Cross-Reactivity:	Mouse, Rat
Characteristics:	Polyclonal Antibodies
Purification:	Affinity purification

Target Details

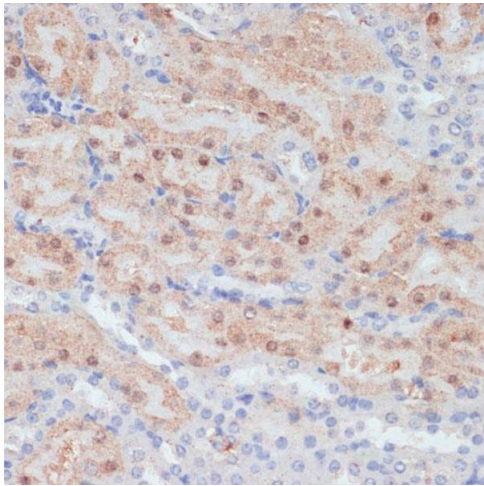
Target:	Claudin 17 (CLDN17)
Alternative Name:	CLDN17 (CLDN17 Products)
Background:	This gene encodes a member of the claudin family. Claudins are integral membrane proteins and components of tight junction strands. Tight junction strands serve as a physical barrier to prevent solutes and water from passing freely through the paracellular space between epithelial or endothelial cell sheets, and also play critical roles in maintaining cell polarity and signal transductions. This gene is intronless and is clustered with CLDN8 on chromosome 21q22.11.,CLDN17,Signal Transduction,Cell Biology & Developmental Biology,Cell Adhesion,Tight Junctions,Cytoskeleton,CLDN17
Molecular Weight:	24kDa
Gene ID:	26285
UniProt:	P56750
Pathways:	Cell-Cell Junction Organization , Hepatitis C

Application Details

Application Notes:	WB,1:500 - 1:2000,IHC,1:50 - 1:100,IF,1:50 - 1:100
Restrictions:	For Research Use only

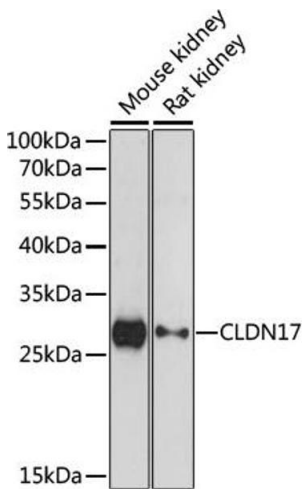
Handling

Format:	Liquid
Buffer:	PBS with 0.02 % sodium azide,50 % glycerol, pH 7.3.
Preservative:	Sodium azide
Precaution of Use:	This product contains Sodium azide: a POISONOUS AND HAZARDOUS SUBSTANCE which should be handled by trained staff only.
Storage:	-20 °C
Storage Comment:	Store at -20°C. Avoid freeze / thaw cycles.



Immunohistochemistry

Image 1. Immunohistochemistry of paraffin-embedded mouse kidney using CLDN17 antibody (ABIN7266407) at dilution of 1:100 (40x lens). Perform microwave antigen retrieval with 10 mM PBS buffer pH 7.2 before commencing with IHC staining protocol.



Western Blotting

Image 2. Western blot analysis of extracts of various cell lines, using CLDN17 antibody (ABIN7266407) at 1:1000 dilution. Secondary antibody: HRP Goat Anti-Rabbit IgG (H+L) (ABIN1684268 and ABIN3020597) at 1:10000 dilution. Lysates/proteins: 25 µg per lane. Blocking buffer: 3 % nonfat dry milk in TBST. Detection: ECL Enhanced Kit (RM00021). Exposure time: 30s.