



[Go to Product page](#)

Datasheet for ABIN7266412  
**anti-CPSF4L antibody (AA 1-228)**

1 Image

Overview

Quantity:	100 µL
Target:	CPSF4L
Binding Specificity:	AA 1-228
Reactivity:	Mouse
Host:	Rabbit
Clonality:	Polyclonal
Conjugate:	This CPSF4L antibody is un-conjugated
Application:	Western Blotting (WB)

Product Details

Purpose:	Cpsf4l Rabbit pAb
Immunogen:	Recombinant fusion protein containing a sequence corresponding to amino acids 1-228 of mouse Cpsf4l (NP_080958.2).
Sequence:	MEEVIAGLQG FTFAFELDVE SQKGTGLLPF QGMDKSSSAV CNFFAKGLCV KGMLCPLRHE QGEKLVVCKH WLRGLCRKSD CCDFLHQYDV SKMPVCYFHS KFGNCSNKEC LFLHLKPVLK LQDCPWYNQG FCKEVGPLCK YRHVHQVLCP NYFTGFCPEG PQCQFGHPKM SPPFHPSNVK LQPVNQPWDS TTSTGNTLVS PFQAKPMVHG QRRWSLPQAC SSRAHPAP
Isotype:	IgG
Cross-Reactivity:	Mouse
Characteristics:	Polyclonal Antibodies

## Product Details

---

Purification: Affinity purification

## Target Details

---

Target: CPSF4L

Alternative Name: Cpsf4l ([CPSF4L Products](#))

Background: CPSF4L,0610010C04Rik,1500000C01Rik,D11Ert636e,Cpsf4l,Epigenetics & Nuclear Signaling,Cpsf4l

Molecular Weight: 20kDa

Gene ID: 52670

UniProt: [A6NMK7](#)

## Application Details

---

Application Notes: WB,1:500 - 1:2000

Restrictions: For Research Use only

## Handling

---

Format: Liquid

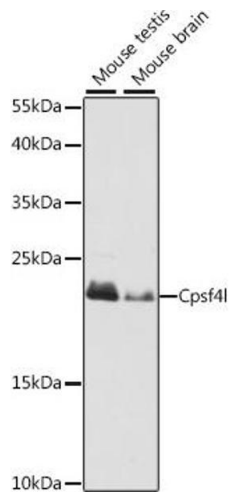
Buffer: PBS with 0.02 % sodium azide,50 % glycerol, pH 7.3.

Preservative: Sodium azide

Precaution of Use: This product contains Sodium azide: a POISONOUS AND HAZARDOUS SUBSTANCE which should be handled by trained staff only.

Storage: -20 °C

Storage Comment: Store at -20°C. Avoid freeze / thaw cycles.



### Western Blotting

**Image 1.** Western blot analysis of extracts of various cell lines, using Cpsf4l antibody (ABIN7266412) at 1:1000 dilution. Secondary antibody: HRP Goat Anti-Rabbit IgG (H+L) (ABIN1684268 and ABIN3020597) at 1:10000 dilution. Lysates/proteins: 25 µg per lane. Blocking buffer: 3 % nonfat dry milk in TBST. Detection: ECL Basic Kit (RM00020). Exposure time: 10s.