

Datasheet for ABIN7266414

anti-CLOCK antibody

4 Images

[Go to Product page](#)

Overview

Quantity:	100 µL
Target:	CLOCK
Reactivity:	Human
Host:	Rabbit
Clonality:	Monoclonal
Conjugate:	This CLOCK antibody is un-conjugated
Application:	Western Blotting (WB), Immunofluorescence (IF)

Product Details

Purpose:	CLOCK Rabbit mAb
Immunogen:	A synthesized peptide derived from human CLOCK
Isotype:	IgG
Cross-Reactivity:	Human, Mouse, Rat
Characteristics:	Monoclonal Antibodies
Purification:	Affinity purification

Target Details

Target:	CLOCK
Alternative Name:	CLOCK (CLOCK Products)
Background:	The protein encoded by this gene plays a central role in the regulation of circadian rhythms. The

Target Details

protein encodes a transcription factor of the basic helix-loop-helix (bHLH) family and contains DNA binding histone acetyltransferase activity. The encoded protein forms a heterodimer with ARNTL (BMAL1) that binds E-box enhancer elements upstream of Period (PER1, PER2, PER3) and Cryptochrome (CRY1, CRY2) genes and activates transcription of these genes. PER and CRY proteins heterodimerize and repress their own transcription by interacting in a feedback loop with CLOCK/ARNTL complexes. Polymorphisms in this gene may be associated with behavioral changes in certain populations and with obesity and metabolic syndrome. Alternative splicing results in multiple transcript variants. [provided by RefSeq, Jan 2014],KAT13D, bHLHe8,Blood,Blood_Blood Pressure regulation,Cardiovascular,Endocrine & Metabolism,Epigenetics & Nuclear Signaling,Heart,Heart_Cardiac metabolism,Lipid Metabolism,Neuroscience,Signal Transduction,Transcription Factors,CLOCK

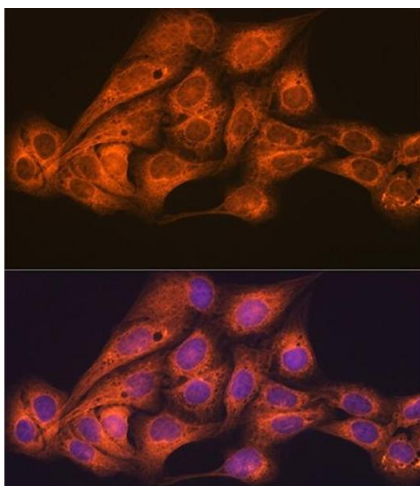
Molecular Weight:	95kDa
Gene ID:	9575
UniProt:	O15516
Pathways:	Regulation of Lipid Metabolism by PPARalpha , Photoperiodism

Application Details

Application Notes:	WB,1:500 - 1:2000,IF,1:50 - 1:200
Restrictions:	For Research Use only

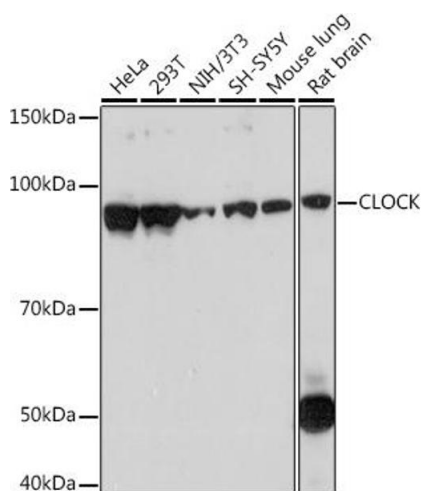
Handling

Format:	Liquid
Buffer:	PBS with 0.02 % sodium azide,0.05 % BSA,50 % glycerol, pH 7.3.
Preservative:	Sodium azide
Precaution of Use:	This product contains Sodium azide: a POISONOUS AND HAZARDOUS SUBSTANCE which should be handled by trained staff only.
Storage:	-20 °C
Storage Comment:	Store at -20°C. Avoid freeze / thaw cycles.



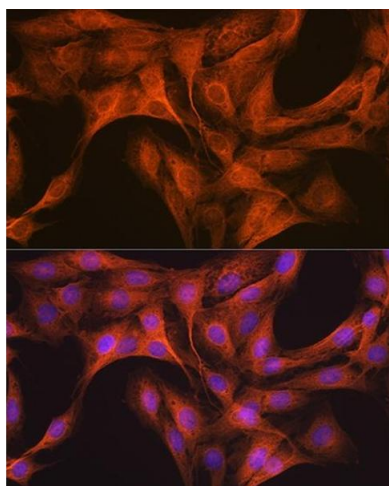
Immunofluorescence

Image 1. Immunofluorescence analysis of U-2 OS cells using CLOCK Rabbit mAb (ABIN7266414) at dilution of 1:100 (40x lens). Blue: DAPI for nuclear staining.



Western Blotting

Image 2. Western blot analysis of extracts of various cell lines, using CLOCK Rabbit mAb (ABIN7266414) at 1:1000 dilution. Secondary antibody: HRP Goat Anti-Rabbit IgG (H+L) (ABIN1684268 and ABIN3020597) at 1:10000 dilution. Lysates/proteins: 25 µg per lane. Blocking buffer: 3 % nonfat dry milk in TBST. Detection: ECL Basic Kit (RM00020). Exposure time: 3s.



Immunofluorescence

Image 3. Immunofluorescence analysis of C6 cells using CLOCK Rabbit mAb (ABIN7266414) at dilution of 1:100 (40x lens). Blue: DAPI for nuclear staining.

Please check the [product details page](#) for more images. Overall 4 images are available for ABIN7266414.