

Datasheet for ABIN7266417

**anti-CLPX antibody****1** Image[Go to Product page](#)

## Overview

Quantity:	100 µL
Target:	CLPX
Reactivity:	Human
Host:	Rabbit
Clonality:	Monoclonal
Conjugate:	This CLPX antibody is un-conjugated
Application:	Western Blotting (WB)

## Product Details

Purpose:	CLPX Rabbit mAb
Immunogen:	Recombinant protein of Human CLPX.
Isotype:	IgG
Cross-Reactivity:	Human, Mouse, Rat
Characteristics:	Monoclonal Antibodies
Purification:	Affinity purification

## Target Details

Target:	CLPX
Alternative Name:	CLPX ( <a href="#">CLPX Products</a> )
Background:	The protein encoded by this gene is part of a protease found in mitochondria. This protease is

## Target Details

ATP-dependent and targets specific proteins for degradation. The protease consists of two heptameric rings of the CLPP catalytic subunit sandwiched between two hexameric rings of the chaperone subunit encoded by this gene. Targeted proteins are unwound by this protein and then passed on to the CLPP subunit for degradation. Two transcript variants, one protein-coding and the other non-protein coding, have been found for this gene.,CLPX,Signal Transduction,Cell Biology & Developmental Biology,Ubiquitin,Endocrine & Metabolism,Mitochondrial metabolism,Mitochondrial markers,CLPX

Gene ID: 10845

UniProt: [O76031](#)

## Application Details

Application Notes: WB,1:500 - 1:2000

Restrictions: For Research Use only

## Handling

Format: Liquid

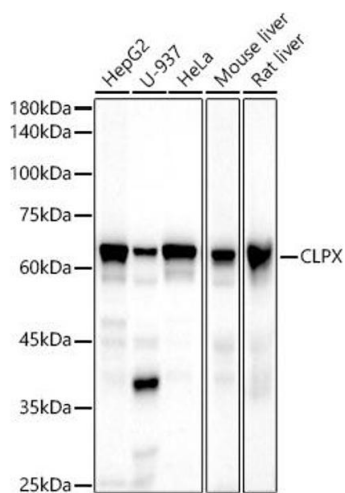
Buffer: PBS with 0.02 % sodium azide,0.05 % BSA,50 % glycerol, pH 7.3.

Preservative: Sodium azide

Precaution of Use: This product contains Sodium azide: a POISONOUS AND HAZARDOUS SUBSTANCE which should be handled by trained staff only.

Storage: -20 °C

Storage Comment: Store at -20°C. Avoid freeze / thaw cycles.



### Western Blotting

**Image 1.** Western blot analysis of extracts of various cell lines, using CLPX antibody (ABIN7266417) at 1:500 dilution. Secondary antibody: HRP Goat Anti-Rabbit IgG (H+L) (ABIN1684268 and ABIN3020597) at 1:10000 dilution. Lysates/proteins: 25 µg per lane. Blocking buffer: 3 % nonfat dry milk in TBST. Detection: ECL Basic Kit (RM00020). Exposure time: 30s.