



Datasheet for ABIN7266418 **anti-CLPX antibody (AA 500-600)**



[Go to Product page](#)

1 Image

Overview

| | |
|----------------------|-------------------------------------|
| Quantity: | 100 µL |
| Target: | CLPX |
| Binding Specificity: | AA 500-600 |
| Reactivity: | Human |
| Host: | Rabbit |
| Clonality: | Polyclonal |
| Conjugate: | This CLPX antibody is un-conjugated |
| Application: | Western Blotting (WB) |

Product Details

| | |
|-------------------|---|
| Purpose: | CLPX Rabbit pAb |
| Immunogen: | A synthetic peptide corresponding to a sequence within amino acids 500-600 of human CLPX (NP_006651.2). |
| Sequence: | LPVVVPLHSL DEKTLVQILT EPRNAVIPQY QALFSMDKCE LNVTEDALKA IARLALERKT GARGLRSIME KLLLEPMFEV PNSDIVCVEV DKEVEGKKE P |
| Isotype: | IgG |
| Cross-Reactivity: | Mouse, Rat |
| Characteristics: | Polyclonal Antibodies |
| Purification: | Affinity purification |

Target Details

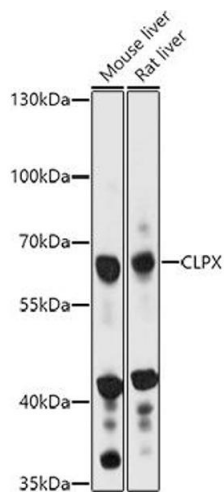
| | |
|-------------------|---|
| Target: | CLPX |
| Alternative Name: | CLPX (CLPX Products) |
| Background: | <p>The protein encoded by this gene is part of a protease found in mitochondria. This protease is ATP-dependent and targets specific proteins for degradation. The protease consists of two heptameric rings of the CLPP catalytic subunit sandwiched between two hexameric rings of the chaperone subunit encoded by this gene. Targeted proteins are unwound by this protein and then passed on to the CLPP subunit for degradation. Two transcript variants, one protein-coding and the other non-protein coding, have been found for this gene. CLPX, Signal Transduction, Cell Biology & Developmental Biology, Ubiquitin, Endocrine & Metabolism, Mitochondrial metabolism, Mitochondrial markers, CLPX</p> |
| Gene ID: | 10845 |
| UniProt: | O76031 |

Application Details

| | |
|--------------------|-----------------------|
| Application Notes: | WB, 1:500 - 1:2000 |
| Restrictions: | For Research Use only |

Handling

| | |
|--------------------|--|
| Format: | Liquid |
| Buffer: | PBS with 0.02 % sodium azide, 50 % glycerol, pH 7.3. |
| Preservative: | Sodium azide |
| Precaution of Use: | This product contains Sodium azide: a POISONOUS AND HAZARDOUS SUBSTANCE which should be handled by trained staff only. |
| Storage: | -20 °C |
| Storage Comment: | Store at -20°C. Avoid freeze / thaw cycles. |



Western Blotting

Image 1. Western blot analysis of extracts of various cell lines, using CLPX antibody (ABIN7266418) at 1:1000 dilution. Secondary antibody: HRP Goat Anti-Rabbit IgG (H+L) (ABIN1684268 and ABIN3020597) at 1:10000 dilution. Lysates/proteins: 25 µg per lane. Blocking buffer: 3 % nonfat dry milk in TBST. Detection: ECL Basic Kit (RM00020). Exposure time: 10s.