

Datasheet for ABIN7266424  
**anti-COPA antibody (AA 550-650)**[Go to Product page](#)

## 1 Image

## Overview

Quantity:	100 µL
Target:	COPA
Binding Specificity:	AA 550-650
Reactivity:	Human
Host:	Rabbit
Clonality:	Polyclonal
Conjugate:	This COPA antibody is un-conjugated
Application:	Western Blotting (WB)

## Product Details

Purpose:	COPA Rabbit pAb
Immunogen:	A synthetic peptide corresponding to a sequence within amino acids 550-650 of human COPA (NP_001091868.1).
Sequence:	FIYTTSNHIK YAVTTGDHGI IRTLDLPIYV TRVKGNNVYC LDRECRPRVL TIDPTEFKFK LALINRKYDE VLHMMVRNAKL VGQSIIAYLQ KKGYPEVALH F
Isotype:	IgG
Cross-Reactivity:	Mouse
Characteristics:	Polyclonal Antibodies
Purification:	Affinity purification

## Target Details

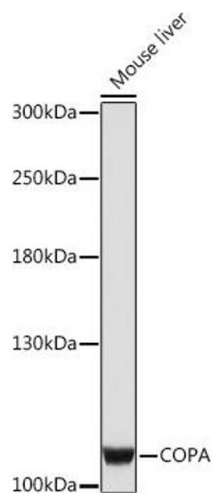
Target:	COPA
Alternative Name:	COPA ( <a href="#">COPA Products</a> )
Background:	In eukaryotic cells, protein transport between the endoplasmic reticulum and Golgi compartments is mediated in part by non-clathrin-coated vesicular coat proteins (COPs). Seven coat proteins have been identified, and they represent subunits of a complex known as coatomer. The subunits are designated alpha-COP, beta-COP, beta-prime-COP, gamma-COP, delta-COP, epsilon-COP, and zeta-COP. The alpha-COP, encoded by COPA, shares high sequence similarity with RET1P, the alpha subunit of the coatomer complex in yeast. Also, the N-terminal 25 amino acids of alpha-COP encode the bioactive peptide, xenin, which stimulates exocrine pancreatic secretion and may act as a gastrointestinal hormone. Alternative splicing results in multiple splice forms encoding distinct isoforms.,COPA,AIIJK,HEP-COP,Signal Transduction,COPA
Gene ID:	1314
UniProt:	<a href="#">P53621</a>
Pathways:	<a href="#">Hormone Activity</a>

## Application Details

Application Notes:	WB,1:500 - 1:2000
Restrictions:	For Research Use only

## Handling

Format:	Liquid
Buffer:	PBS with 0.02 % sodium azide,50 % glycerol, pH 7.3.
Preservative:	Sodium azide
Precaution of Use:	This product contains Sodium azide: a POISONOUS AND HAZARDOUS SUBSTANCE which should be handled by trained staff only.
Storage:	-20 °C
Storage Comment:	Store at -20°C. Avoid freeze / thaw cycles.



### Western Blotting

**Image 1.** Western blot analysis of extracts of Mouse liver, using COPA Rabbit pAb (ABIN7266424) at 1:1000 dilution. Secondary antibody: HRP Goat Anti-Rabbit IgG (H+L) (ABIN1684268 and ABIN3020597) at 1:10000 dilution. Lysates/proteins: 25 µg per lane. Blocking buffer: 3 % nonfat dry milk in TBST. Detection: ECL Enhanced Kit (RM00021). Exposure time: 180s.