



[Go to Product page](#)

Datasheet for ABIN7266425
anti-COPG2 antibody (AA 542-871)

5 Images

Overview

Quantity:	100 µL
Target:	COPG2
Binding Specificity:	AA 542-871
Reactivity:	Human
Host:	Rabbit
Clonality:	Polyclonal
Conjugate:	This COPG2 antibody is un-conjugated
Application:	Western Blotting (WB), Immunohistochemistry (IHC), Immunofluorescence (IF)

Product Details

Purpose:	COPG2 Rabbit pAb
Immunogen:	Recombinant fusion protein containing a sequence corresponding to amino acids 542-871 of human COPG2 (NP_036265.3).
Sequence:	LNATYIFNGL TVSVPGMEKA LHQYTLEPSE KPFDMKSIPL AMAPVFEQKA EITLVATKPE KLAPSRQDIF QEQLAAIPEF LNIGPLFKSS EPVQLTEAET EYFVRCIKHM FTNHIVFQFD CTNTLNQQLL EKVTVQMEPS DSYEVLSCIP APSLPYNQPG ICYTLVRLPD DDPTAVAGSF SCTMKFTVRD CDPNTGVPDE DGYDDEYVLE DLEVTVSDHI QKVLKPNFAA AWEEVGDTFE KEETFALSST KTL EEAVNNI ITFLGMQPCE RSDKVPENKN SHSLYLAGIF RGGYDLLVRS RLALADGVTM QVTVRSKERT PVDVILASVG
Isotype:	IgG
Cross-Reactivity:	Human, Mouse, Rat

Product Details

Characteristics: Polyclonal Antibodies

Purification: Affinity purification

Target Details

Target: COPG2

Alternative Name: COPG2 ([COPG2 Products](#))

Background: The coatomer is a cytosolic protein complex that binds to dilysine motifs and reversibly associates with Golgi non-clathrin-coated vesicles, which further mediate biosynthetic protein transport from the ER, via the Golgi up to the trans Golgi network. Coatomer complex is required for budding from Golgi membranes, and is essential for the retrograde Golgi-to-ER transport of dilysine-tagged proteins. In mammals, the coatomer can only be recruited by membranes associated to ADP-ribosylation factors (ARFs, which are small GTP-binding proteins, the complex also influences the Golgi structural integrity, as well as the processing, activity, and endocytic recycling of LDL receptors (By similarity,.COPG2,2-COP,gamma-2-COP,Signal Transduction,COPG2

Molecular Weight: 81kDa/97kDa

Gene ID: 26958

UniProt: [Q9UBF2](#)

Application Details

Application Notes: WB,1:500 - 1:2000,IHC,1:50 - 1:100,IF,1:50 - 1:100

Restrictions: For Research Use only

Handling

Format: Liquid

Buffer: PBS with 0.02 % sodium azide,50 % glycerol, pH 7.3.

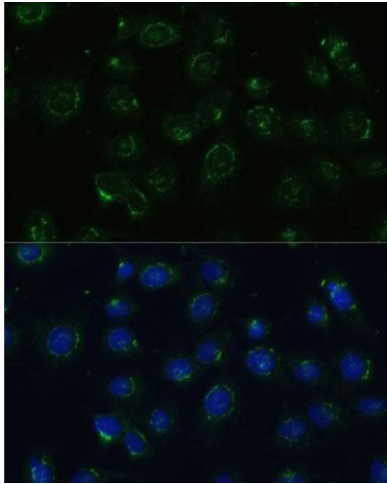
Preservative: Sodium azide

Precaution of Use: This product contains Sodium azide: a POISONOUS AND HAZARDOUS SUBSTANCE which should be handled by trained staff only.

Storage: -20 °C

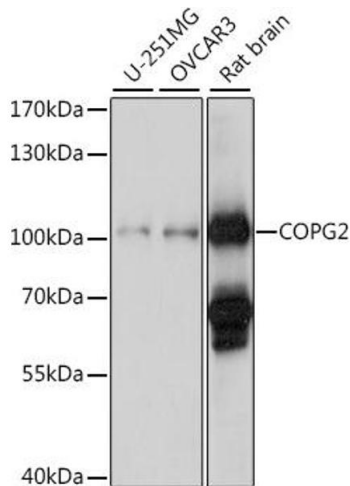
Storage Comment: Store at -20°C. Avoid freeze / thaw cycles.

Images



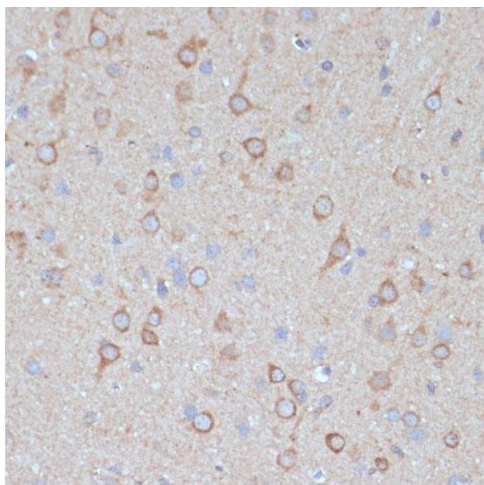
Immunofluorescence

Image 1. Immunofluorescence analysis of C6 cells using COPG2 Polyclonal Antibody (ABIN7266425) at dilution of 1:100 (40x lens). Blue: DAPI for nuclear staining.



Western Blotting

Image 2. Western blot analysis of extracts of various cell lines, using COPG2 antibody (ABIN7266425) at 1:1000 dilution. Secondary antibody: HRP Goat Anti-Rabbit IgG (H+L) (ABIN1684268 and ABIN3020597) at 1:10000 dilution. Lysates/proteins: 25 µg per lane. Blocking buffer: 3 % nonfat dry milk in TBST. Detection: ECL Basic Kit (RM00020). Exposure time: 90s.



Immunohistochemistry

Image 3. Immunohistochemistry of paraffin-embedded rat brain using COPG2 antibody (ABIN7266425) at dilution of 1:100 (40x lens). Perform microwave antigen retrieval with 10 mM PBS buffer pH 7.2 before commencing with IHC staining protocol.

Please check the [product details page](#) for more images. Overall 5 images are available for ABIN7266425.