



[Go to Product page](#)

Datasheet for ABIN7266430  
**anti-CC2D1A antibody**

2 Images

### Overview

Quantity:	100 µL
Target:	CC2D1A
Reactivity:	Human
Host:	Rabbit
Clonality:	Monoclonal
Conjugate:	This CC2D1A antibody is un-conjugated
Application:	Western Blotting (WB), Immunohistochemistry (IHC)

### Product Details

Purpose:	CC2D1A Rabbit mAb
Immunogen:	Recombinant protein of human CC2D1A.
Isotype:	IgG
Cross-Reactivity:	Human, Mouse, Rat
Characteristics:	Monoclonal Antibodies
Purification:	Affinity purification

### Target Details

Target:	CC2D1A
Alternative Name:	CC2D1A ( <a href="#">CC2D1A Products</a> )
Background:	This gene encodes a transcriptional repressor that binds to a conserved 14-bp 5'-repressor

## Target Details

---

element and regulates expression of the 5-hydroxytryptamine (serotonin) receptor 1A gene in neuronal cells. The DNA binding and transcriptional repressor activities of the protein are inhibited by calcium. A mutation in this gene results in nonsyndromic mental retardation-3,CC2D1A, FREUD-1, Freud-1/Aki1, MRT3, coiled-coil and C2 domain containing 1A,Epigenetics & Nuclear Signaling,Transcription Factors,CC2D1A

Molecular Weight: 130kDa

Gene ID: 54862

UniProt: [Q6P1N0](#)

## Application Details

---

Application Notes: WB,1:500 - 1:2000,IHC,1:50 - 1:200

Restrictions: For Research Use only

## Handling

---

Format: Liquid

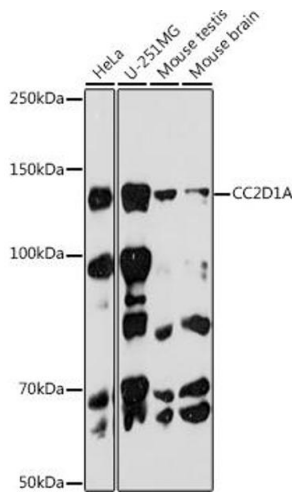
Buffer: PBS with 0.02 % sodium azide,0.05 % BSA,50 % glycerol, pH 7.3.

Preservative: Sodium azide

Precaution of Use: This product contains Sodium azide: a POISONOUS AND HAZARDOUS SUBSTANCE which should be handled by trained staff only.

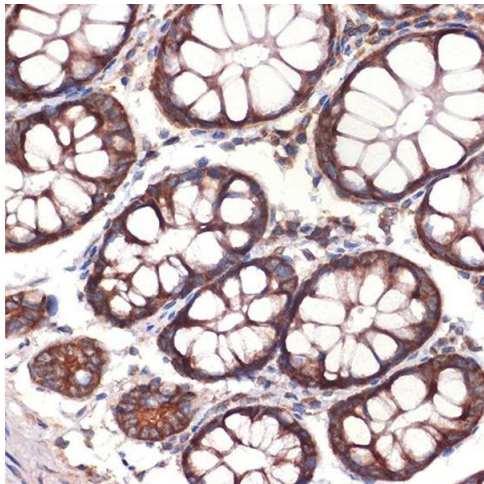
Storage: -20 °C

Storage Comment: Store at -20°C. Avoid freeze / thaw cycles.



### Western Blotting

**Image 1.** Western blot analysis of extracts of various cell lines, using CC2D1A antibody (ABIN7266430) at 1:1000 dilution. Secondary antibody: HRP Goat Anti-Rabbit IgG (H+L) (ABIN1684268 and ABIN3020597) at 1:10000 dilution. Lysates/proteins: 25 µg per lane. Blocking buffer: 3 % nonfat dry milk in TBST. Detection: ECL Basic Kit (RM00020). Exposure time: 180s.



### Immunohistochemistry

**Image 2.** Immunohistochemistry of paraffin-embedded human colon using CC2D1A Rabbit mAb (ABIN7266430) at dilution of 1:100 (40x lens). Perform microwave antigen retrieval with 10 mM Tris/EDTA buffer pH 9.0 before commencing with IHC staining protocol.