



Datasheet for ABIN7266439
anti-CCDC50 antibody (AA 10-147)



[Go to Product page](#)

1 Image

Overview

Quantity:	100 µL
Target:	CCDC50
Binding Specificity:	AA 10-147
Reactivity:	Human
Host:	Rabbit
Clonality:	Polyclonal
Conjugate:	This CCDC50 antibody is un-conjugated
Application:	Western Blotting (WB)

Product Details

Purpose:	CCDC50 Rabbit pAb
Immunogen:	Recombinant fusion protein containing a sequence corresponding to amino acids 10-147 of human CCDC50 (NP_777568.1).
Sequence:	KLPGVKEVCR DFAVLEDHTL AHSLQEQEIE HHLASNVQRN RLVQHDLQVA KQLQEEDLKA QAQLQKRYKD LEQQDCEIAQ EIQEKLAI EA ERRRIQEKKD EDIARLLQEK ELQEEKKRKK HFPEFPATRA YADSYYYE
Isotype:	IgG
Cross-Reactivity:	Human, Mouse, Rat
Characteristics:	Polyclonal Antibodies
Purification:	Affinity purification

Target Details

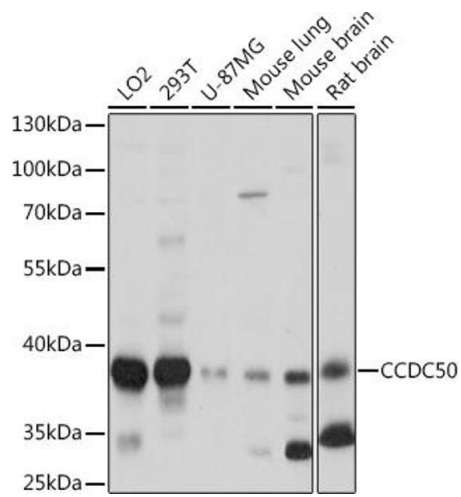
Target:	CCDC50
Alternative Name:	CCDC50 (CCDC50 Products)
Background:	This gene encodes a soluble, cytoplasmic, tyrosine-phosphorylated protein with multiple ubiquitin-interacting domains. Mutations in this gene cause nonsyndromic, postlingual, progressive sensorineural DFNA44 hearing loss. In mouse, the protein is expressed in the inner ear during development and postnatal maturation and associates with microtubule-based structures. This protein may also function as a negative regulator of NF- κ B signaling and as an effector of epidermal growth factor (EGF)-mediated cell signaling. Alternative splicing results in multiple transcript variants encoding distinct isoforms. [provided by RefSeq, Oct 2008],C3orf6,DFNA44,YMER,CCDC50,Epigenetics & Nuclear Signaling,Transcription Factors,CCDC50
Molecular Weight:	35kDa/56kDa
Gene ID:	152137
UniProt:	Q8IVM0

Application Details

Application Notes:	WB,1:500 - 1:2000
Restrictions:	For Research Use only

Handling

Format:	Liquid
Buffer:	PBS with 0.02 % sodium azide,50 % glycerol, pH 7.3.
Preservative:	Sodium azide
Precaution of Use:	This product contains Sodium azide: a POISONOUS AND HAZARDOUS SUBSTANCE which should be handled by trained staff only.
Storage:	-20 °C
Storage Comment:	Store at -20°C. Avoid freeze / thaw cycles.



Western Blotting

Image 1. Western blot analysis of extracts of various cell lines, using CCDC50 Rabbit pAb (ABIN7266439) at 1:1000 dilution. Secondary antibody: HRP Goat Anti-Rabbit IgG (H+L) (ABIN1684268 and ABIN3020597) at 1:10000 dilution. Lysates/proteins: 25 µg per lane. Blocking buffer: 3 % nonfat dry milk in TBST. Detection: ECL Basic Kit (RM00020). Exposure time: 1s.