



[Go to Product page](#)

Datasheet for ABIN7266440
anti-CCDC59 antibody (AA 1-241)

5 Images

Overview

Quantity:	100 µL
Target:	CCDC59
Binding Specificity:	AA 1-241
Reactivity:	Human
Host:	Rabbit
Clonality:	Polyclonal
Conjugate:	This CCDC59 antibody is un-conjugated
Application:	Western Blotting (WB), Immunohistochemistry (IHC), Immunofluorescence (IF)

Product Details

Purpose:	CCDC59 Rabbit pAb
Immunogen:	Recombinant fusion protein containing a sequence corresponding to amino acids 1-241 of human CCDC59 (NP_054886.2).
Sequence:	MAPVRRSAKW RPPGIEARGE GVSTVGYRNLK NVRQKTWRPN HPQAFVGSVR EGQGFARRK LKIQQSYKKL LRKEKKAQTS LESQFTDRYP DNLKHLYLAE EERHRKQARK VDHPLSEQVH QPLLEEQCSI DEPLFEDQCS FDQPQPEEQC IKTVNSFTIP KKNKKKTSNQ KAQEEYEIQ AKRAAKKQEF ERRKQEREEA QRQYKKKKME VFKILNKKTK KGQPNLNVQM EYLLQKIQEK C
Isotype:	IgG
Cross-Reactivity:	Human, Mouse, Rat
Characteristics:	Polyclonal Antibodies

Product Details

Purification: Affinity purification

Target Details

Target: CCDC59

Alternative Name: CCDC59 ([CCDC59 Products](#))

Background: Component of the transcription complexes of the pulmonary surfactant-associated protein-B (SFTPB and -C (SFTPC. Enhances homeobox protein Nkx-2.1-activated SFTPB and SFTPC promoter activities.,CCDC59,BR22,HSPC128,TAP26,Epigenetics & Nuclear Signaling,RNA Binding,CCDC59

Molecular Weight: 28kDa

Gene ID: 29080

UniProt: [Q9P031](#)

Application Details

Application Notes: WB,1:500 - 1:2000,IHC,1:50 - 1:100,IF,1:50 - 1:100

Restrictions: For Research Use only

Handling

Format: Liquid

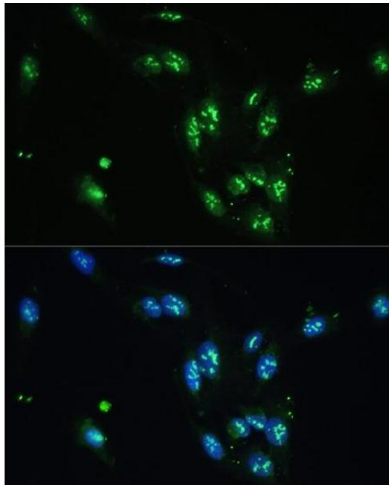
Buffer: PBS with 0.02 % sodium azide,50 % glycerol, pH 7.3.

Preservative: Sodium azide

Precaution of Use: This product contains Sodium azide: a POISONOUS AND HAZARDOUS SUBSTANCE which should be handled by trained staff only.

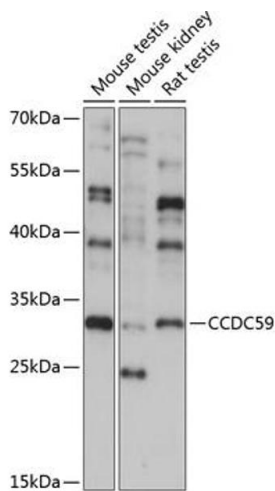
Storage: -20 °C

Storage Comment: Store at -20°C. Avoid freeze / thaw cycles.



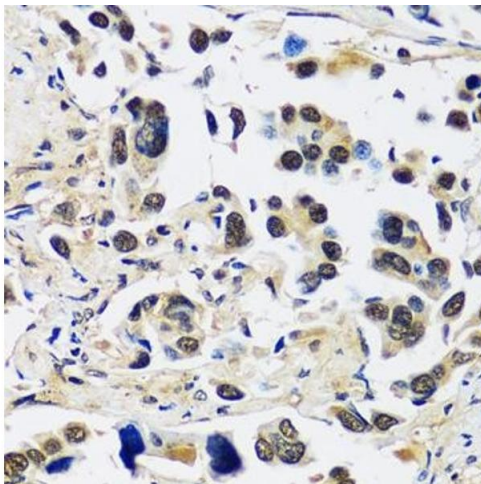
Immunofluorescence

Image 1. Immunofluorescence analysis of U-2 OS cells using CCDC59 antibody (ABIN7266440) at dilution of 1:100. Blue: DAPI for nuclear staining.



Western Blotting

Image 2. Western blot analysis of extracts of various cell lines, using CCDC59 antibody (ABIN7266440) at 1:1000 dilution. Secondary antibody: HRP Goat Anti-Rabbit IgG (H+L) (ABIN1684268 and ABIN3020597) at 1:10000 dilution. Lysates/proteins: 25 µg per lane. Blocking buffer: 3 % nonfat dry milk in TBST. Detection: ECL Basic Kit (RM00020). Exposure time: 15s.



Immunohistochemistry

Image 3. Immunohistochemistry of paraffin-embedded human lung cancer using CCDC59 antibody (ABIN7266440) at dilution of 1:100 (40x lens). Perform microwave antigen retrieval with 10 mM PBS buffer pH 7.2 before commencing with IHC staining protocol.

Please check the [product details page](#) for more images. Overall 5 images are available for ABIN7266440.