



Datasheet for ABIN7266447
anti-CHCHD1 antibody (AA 1-118)



[Go to Product page](#)

1 Image

Overview

Quantity:	100 µL
Target:	CHCHD1
Binding Specificity:	AA 1-118
Reactivity:	Human
Host:	Rabbit
Clonality:	Polyclonal
Conjugate:	This CHCHD1 antibody is un-conjugated
Application:	Western Blotting (WB)

Product Details

Purpose:	CHCHD1 Rabbit pAb
Immunogen:	Recombinant fusion protein containing a sequence corresponding to amino acids 1-118 of human CHCHD1 (NP_976043.1).
Sequence:	MATPSLRGRL ARFGNPRKPV LKPNKPLILA NRVGERRREK GEATCITEMS VMMACWKQNE FRDDACRKEI QGFLDCAARA QEARKMRSIQ ETLGESGSLI PNKLNKLLQR FPNKPYLS
Isotype:	IgG
Cross-Reactivity:	Human, Mouse
Characteristics:	Polyclonal Antibodies
Purification:	Affinity purification

Target Details

Target:	CHCHD1
Alternative Name:	CHCHD1 (CHCHD1 Products)
Background:	CHCHD1,C10orf34,C2360,MRP-S37,Cell Biology & Developmental Biology,CHCHD1
Molecular Weight:	13kDa
Gene ID:	118487
UniProt:	Q96BP2

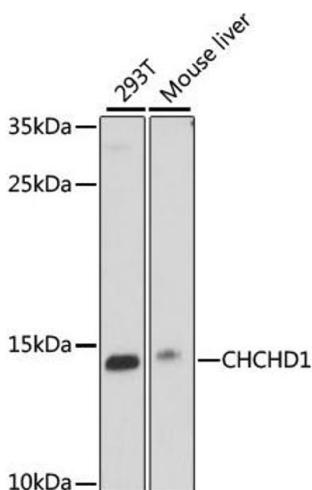
Application Details

Application Notes:	WB,1:500 - 1:2000
Restrictions:	For Research Use only

Handling

Format:	Liquid
Buffer:	PBS with 0.02 % sodium azide,50 % glycerol, pH 7.3.
Preservative:	Sodium azide
Precaution of Use:	This product contains Sodium azide: a POISONOUS AND HAZARDOUS SUBSTANCE which should be handled by trained staff only.
Storage:	-20 °C
Storage Comment:	Store at -20°C. Avoid freeze / thaw cycles.

Images



Western Blotting

Image 1. Western blot analysis of extracts of various cell lines, using CHCHD1 antibody (ABIN7266447) at 1000 dilution. Secondary antibody: HRP Goat Anti-Rabbit IgG (H+L) (ABIN1684268 and ABIN3020597) at 1:10000 dilution. Lysates/proteins: 25 µg per lane. Blocking buffer: 3 % nonfat dry milk in TBST. Detection: ECL Basic Kit (RM00020). Exposure time: 90s.