



[Go to Product page](#)

Datasheet for ABIN7266450
anti-CHCHD7 antibody

2 Images

Overview

Quantity:	100 µL
Target:	CHCHD7
Reactivity:	Human
Host:	Rabbit
Clonality:	Polyclonal
Conjugate:	This CHCHD7 antibody is un-conjugated
Application:	Western Blotting (WB), Immunofluorescence (IF)

Product Details

Purpose:	CHCHD7 Rabbit pAb
Immunogen:	Recombinant protein of human CHCHD7.
Isotype:	IgG
Cross-Reactivity:	Human, Mouse, Rat
Characteristics:	Polyclonal Antibodies
Purification:	Affinity purification

Target Details

Target:	CHCHD7
Alternative Name:	CHCHD7 (CHCHD7 Products)
Background:	CHCHD7 (coiled-coil-helix-coiled-coil-helix domain containing 7) is a protein-coding

Target Details

gene.,COX23,CHCHD7,Cell Biology & Developmental Biology,CHCHD7

Molecular Weight: 6kDa/7kDa/10kDa/11kDa/13kDa

Gene ID: 79145

UniProt: [Q9BUK0](#)

Application Details

Application Notes: WB,1:500 - 1:2000,IF,1:50 - 1:200

Restrictions: For Research Use only

Handling

Format: Liquid

Buffer: PBS with 0.02 % sodium azide,50 % glycerol, pH 7.3.

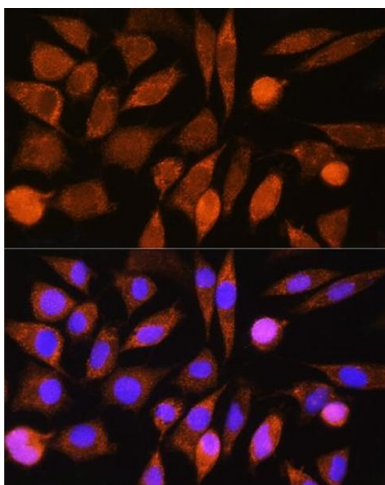
Preservative: Sodium azide

Precaution of Use: This product contains Sodium azide: a POISONOUS AND HAZARDOUS SUBSTANCE which should be handled by trained staff only.

Storage: -20 °C

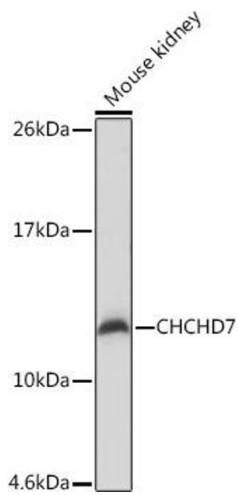
Storage Comment: Store at -20°C. Avoid freeze / thaw cycles.

Images



Immunofluorescence

Image 1. Immunofluorescence analysis of L929 cells using CHCHD7 Rabbit pAb (ABIN7266450) at dilution of 1:100. Blue: DAPI for nuclear staining.



Western Blotting

Image 2. Western blot analysis of extracts of Mouse kidney, using CHCHD7 Rabbit pAb (ABIN7266450) at 1:1000 dilution. Secondary antibody: HRP Goat Anti-Rabbit IgG (H+L) (ABIN1684268 and ABIN3020597) at 1:10000 dilution. Lysates/proteins: 25 µg per lane. Blocking buffer: 3 % nonfat dry milk in TBST. Detection: ECL Basic Kit (RM00020). Exposure time: 10s.